

# Current Issues in TV Advertising

Kenneth C. Wilbur, M.A., Ph.D.

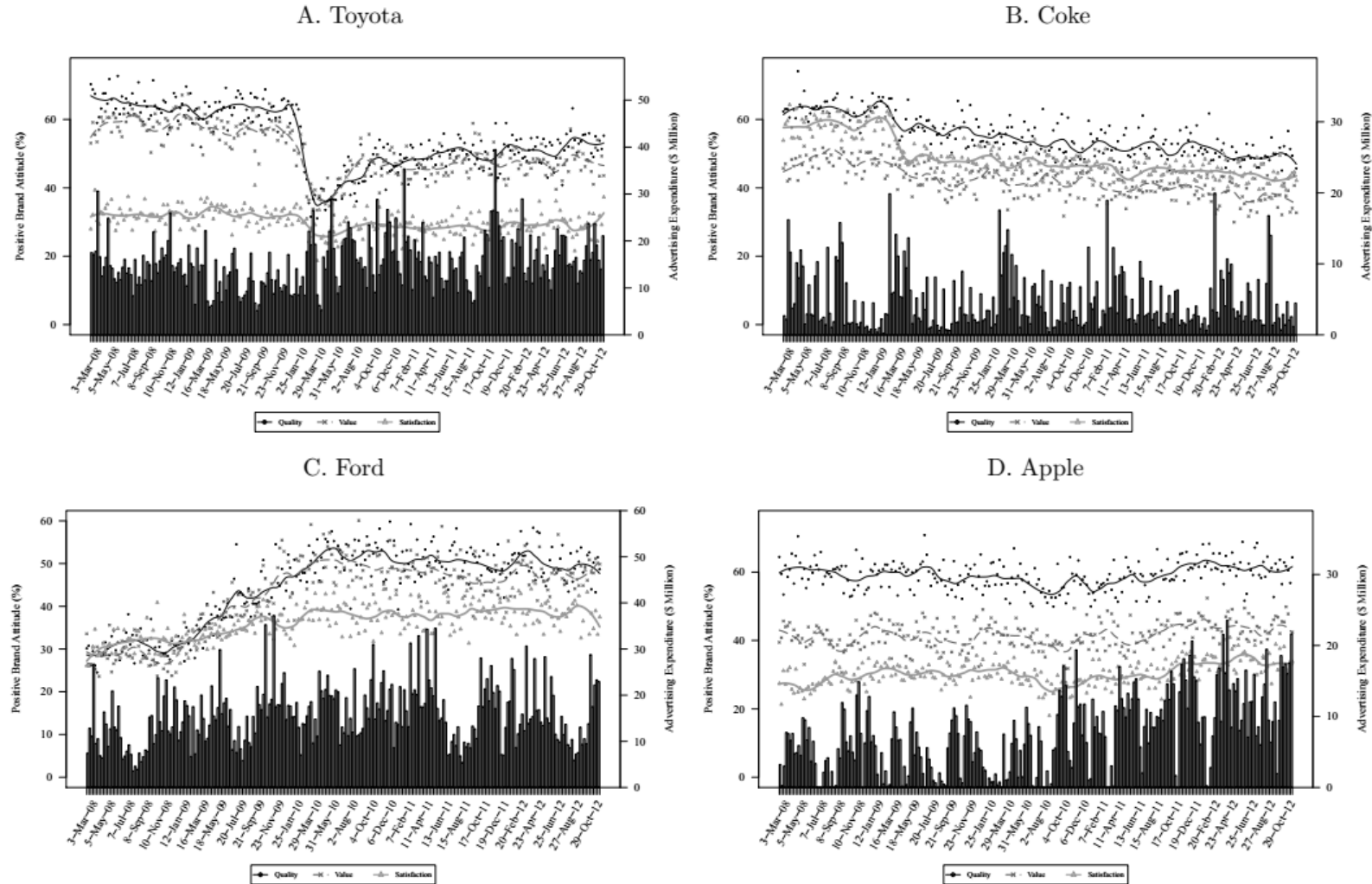
University of California, San Diego

Rady School of Management

Slides and research available at <http://kennethcwilbur.com>

2019-05-02

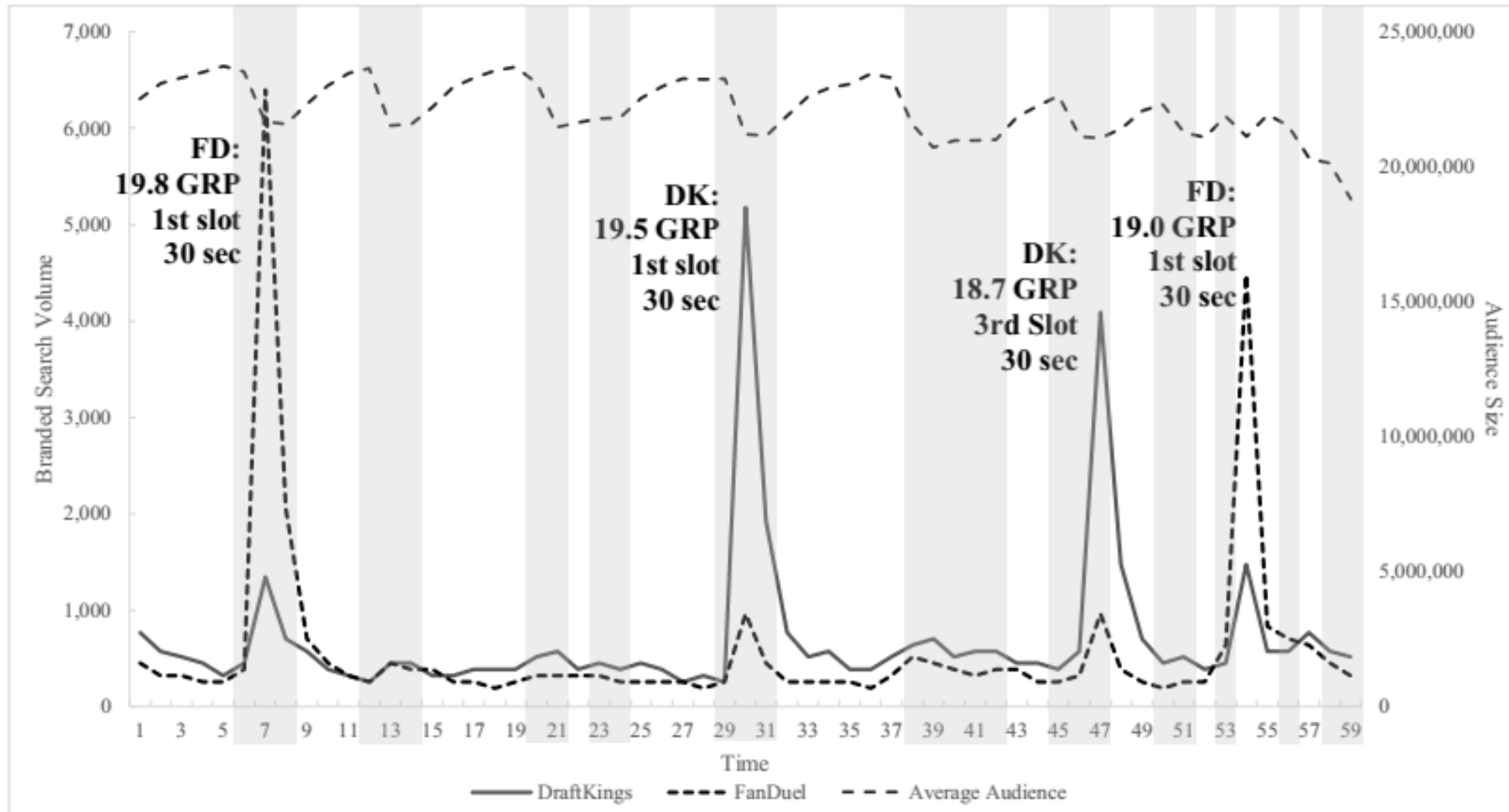
Figure 4: Weekly Brand Attitudes and Ad Expenditures of Selected Brands



From a scientific perspective, brand advertising is like nutrition. Statistical power limits what individuals can learn.

Source: Du, Joo and Wilbur (2019), *Quantitative Marketing and Economics*, forthcoming

**Figure C1: DFS TV Ads and Search Spikes during Sept. 10, 2015, 9:01-9:59 P.M. E.S.T.**



Search data calculated by merging minute-level Google Trends reports with Keyword Planner volume estimates

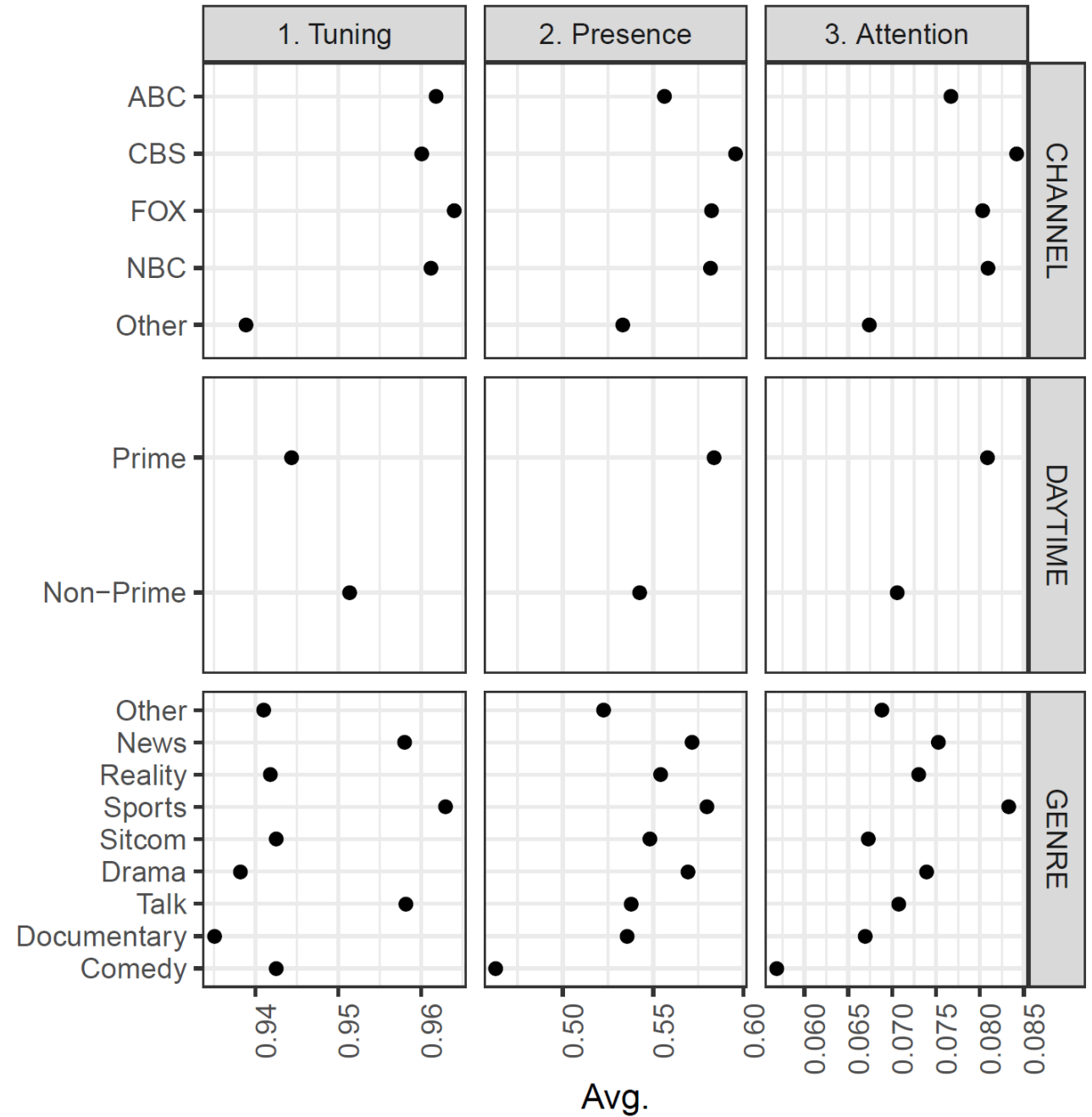
Source: Du, Xu and Wilbur (2019), *Journal of Marketing*, forthcoming



**T>>>VISION**  
INSIGHTS

Averages are taken from 22 million exposures of ~2k viewers to ~24k ads, collected by Tvision Insights

Source: McGranaghan, Liaukonyte and Wilbur (2019), *work in progress*



# How much do TV ad markets overlap?

Top 1,000 advertisers accounted for \$64.8B, 84% of all measured TV spend  
 Table shows the % of top 1,000 TV advertisers who spent at least 5% of their ad budget on {row} *and* at least 5% on {column} in 2018

	National Cable TV Networks	National Broadcast TV Networks	Spanish Language TV	Local Broadcast TV Stations	Syndicated TV Programs
National Cable TV Networks	86%				
National Broadcast TV Networks	69%	72%			
Spanish Language TV	23%	19%	24%		
Local Broadcast TV Stations	23%	17%	6%	34%	
Syndicated TV Programs	35%	30%	11%	8%	35%

Source: ad hoc analysis of Kantar Strategy data by Kenneth Wilbur (2019)

## Overlooked advantages

### **Linear TV**

- Quasi-neutral 3<sup>rd</sup> parties {Nielsen, comScore, others} estimate audience sizes
- Most ads are viewable
- Programming is generally “safe” for brands
- Ad avoidance requires viewer activity

### **Digital Video Ads**

- Ad sellers measure ad impressions and manage invalid traffic, clicks and conversions
- “Viewability” : 50% of the ad pixels played for 2+ seconds
- Ads often appear in inappropriate contexts
- Ad blockers enable passive ad avoidance

But, TV is less targeted; individual-level conversions are difficult to attribute; audience measures are subject to error and difficult to forecast