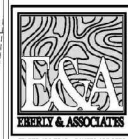
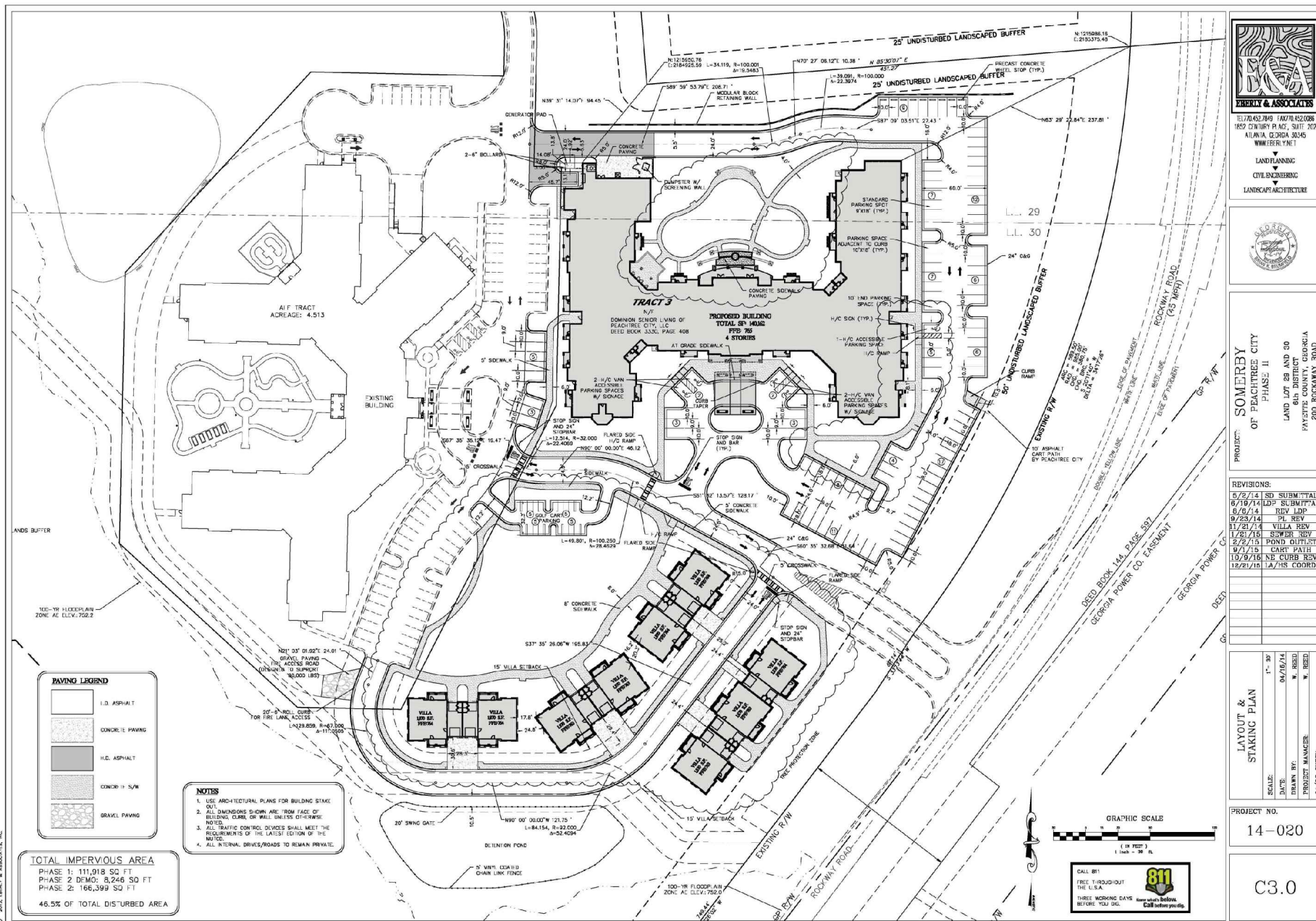


APPENDIX A

PEACHTREE CITY ACCESSIBLE ROUTE DIAGRAM

APPENDIX A

PEACHTREE CITY ACCESSIBLE ROUTE DIAGRAM



PERLEY & ASSOCIATES
 1810 62ND AVENUE, SUITE 202
 ATLANTA, GEORGIA 30345
 WWW.PERLEY.NET

LAND PLANNING
 CIVIL ENGINEERING
 LANDSCAPE ARCHITECTURE

PROJECT: SOMERBY OF PEACHTREE CITY
 PHASE II
 LAND LOT 28 AND 30
 8th DISTRICT
 PAYSONE COUNTY, GEORGIA
 300 ROCKWAY ROAD

REVISIONS:

5/2/14	SD SUBMITTAL
6/10/14	LDP SUBMITTAL
6/26/14	REV LDP
8/25/14	ST. REV
11/20/14	VILLA REV
1/22/15	SWERB REV
2/2/15	POND OUTLET
9/1/15	CURT PATH
10/9/16	NE CURB REV
12/2/16	LA/RS CORRECTION

LAYOUT & STAKING PLAN

SCALE:	1" = 36'
DATE:	09/16/14
DRAWN BY:	W. REED
PROJECT MANAGER:	W. REED
SCALE CHECKER:	W. REED

PROJECT NO.
 14-020

C3.0