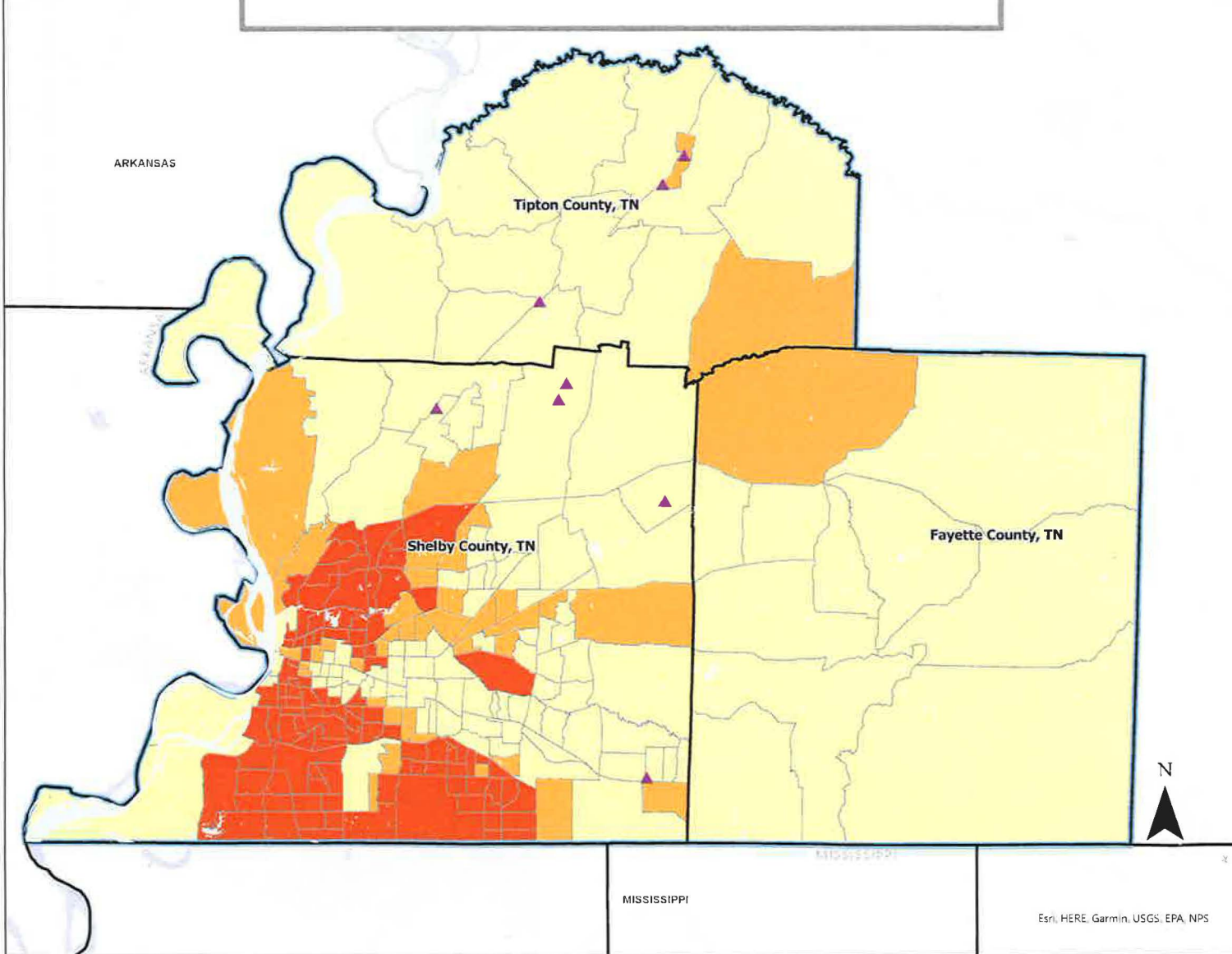


Patriot Bank Branches - Relevant Time Period
Patriot Bank CRA Assessment Area



Legend

- ▲ Bank Branches
 - Water Bodies
 - County Boundaries
 - State Boundary
 - Bank Assessment Area Boundary 2015-2020
- ACS 2015 Census Data by Census Tracts
Black and Hispanic Population Percentage
- ≤49.9%
 - >50% and ≤79.9%
 - >80% and ≤100%



Prepared by:
U.S. Department of Justice
Civil Rights Division
Washington D.C. 20530
Date: 5/17/2022

Exhibit B