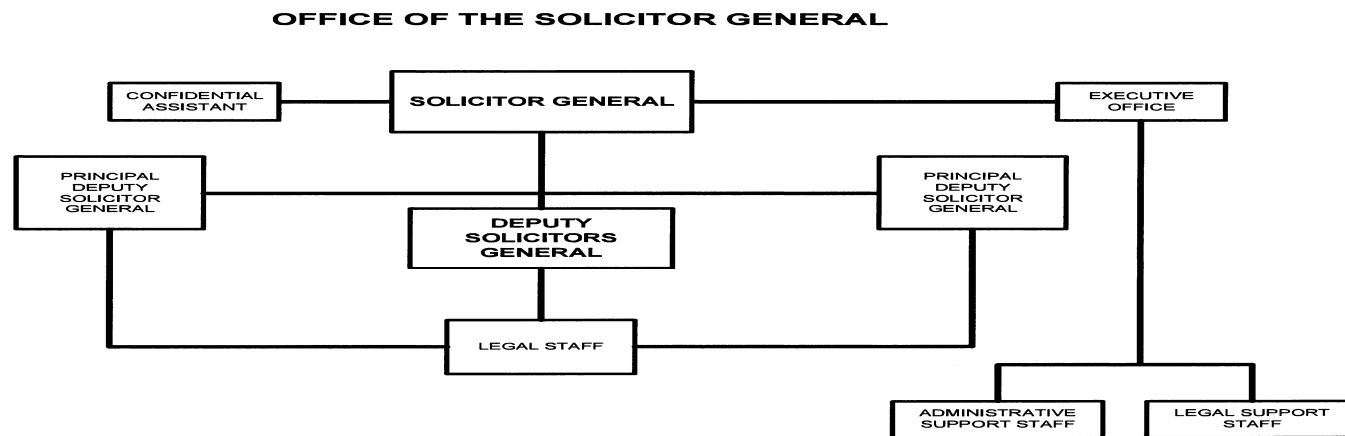


A: Organizational Chart



Approved by:

Pamela Bondi
Attorney General

Date:

9/16/25

B. Summary of Requirements

Summary of Requirements

Office of the Solicitor General

Salaries and Expenses

(Dollars in Thousands)

	FY 2027 Request		
	Direct Positions	FTE	Amount
2025 Enacted*	55	49	15,342
Total 2025 Enacted (with Rescission)	55	49	15,342
2026 Enacted	55	55	15,342
Base Adjustments			
Pay and Benefits	0	0	38
Domestic Rent and Facilities	0	0	34
Other Adjustments	0	0	992
Total Base Adjustments	0	0	1,064
Total Technical and Base Adjustments	55	55	16,406
2027 Current Services	55	55	16,406
2027 Total Request	55	55	16,406
2027 Balance Rescission (if applicable)			0
2027 Total Request (with Rescission)	55	55	16,406
2026 - 2027 Total Change	0	0	1,064

* FTE is actual.

B. Summary of Requirements

Summary of Requirements

Office of the Solicitor General
Salaries and Expenses
(Dollars in Thousands)

Program Activity	2025 Enacted			2026 Enacted			2027 Technical and Base Adjustments			2027 Current Services		
	Positions	Actual FTE	Amount	Positions	Est. FTE	Amount	Positions	Est. FTE	Amount	Positions	Est. FTE	Amount
Federal Appellate Activity	55	49	15,342	55	55	15,342	0	0	1,064	55	55	16,406
Total Direct	55	49	15,342	55	55	15,342	0	0	1,064	55	55	16,406
Balance Rescission			0			0			0			0
Total Direct with Rescission			15,342			15,342			1,064			16,406
Reimbursable FTE		0			0			0			0	
Total Direct and Reimb. FTE		49			55			0			55	
Other FTE:												
LEAP		0			0			0			0	
Overtime		0			0			0			0	
Grand Total, FTE		49			55			0			55	

Program Activity	2027 Increases			2027 Offsets			2027 Request		
	Positions	Est. FTE	Amount	Positions	Est. FTE	Amount	Positions	Est. FTE	Amount
Federal Appellate Activity	0	0	0	0	0	0	55	55	16,406
Total Direct	0	0	0	0	0	0	55	55	16,406
Balance Rescission			0			0			0
Total Direct with Rescission			0			0			16,406
Reimbursable FTE		0			0			0	
Total Direct and Reimb. FTE		0			0			55	
Other FTE:									
LEAP		0			0			0	
Overtime		0			0			0	
Grand Total, FTE		0			0			55	

E. Justification for Technical and Base Adjustments

Justifications for Technical and Base Adjustments

Office of the Solicitor General
Salaries and Expenses
(Dollars in Thousands)

	Direct Pos.	Estimate FTE	Amount
Pay and Benefits			
1 <u>Annualization of 2026 Pay Raise:</u> This pay annualization represents first quarter amounts (October through December) of the 2026 pay increase of 1.0 percent for non-law enforcement and 3.8 percent under a Special Salary Rate for selected law enforcement positions. The amount requested, \$23,000, represents the pay amounts for 1/4 of the fiscal year plus appropriate benefits (\$15,640 for pay and \$7,360 for benefits).	0	0	23
5 <u>Health Insurance:</u> Effective January 2027, the component's contribution to Federal employees' health insurance increases by 265.6 percent. Applied against the 2025 estimate of \$18,069, the additional amount required is \$48,000.	0	0	48
6 <u>Retirement Rate Decrease</u> Per 2025 OMB Circular A-11 section 32, Personnel Compensation, Benefits, and Related Costs, the agency contribution of regular retirement under FERS, FERS-RAE and FERS-FRAE will decrease by approximately 0.5 percent for both Law Enforcement and Non-Law Enforcement. The amount requested, -\$33,000, represents the funds resulting from the decrease in contribution rates.			-33
Subtotal, Pay and Benefits	0	0	38
Domestic Rent and Facilities			
1 <u>General Services Administration (GSA) Rent:</u> GSA will continue to charge rental rates that approximate those charged to commercial tenants for equivalent space and related services. The requested increase of \$32,000 is required to meet our commitment to GSA. The costs associated with GSA rent were derived through the use of an automated system, which uses the latest inventory data, including rate increases to be effective FY 2027 for each building currently occupied by Department of Justice components, as well as the costs of new space to be occupied. GSA provides data on the rate increases.			32
2 <u>Guard Services:</u> This includes Department of Homeland Security (DHS) Federal Protective Service charges, Justice Protective Service charges and other security services across the country. The requested increase of \$2,000 is required to meet these commitments.			2
Subtotal, Domestic Rent and Facilities	0	0	34
Other Adjustments			
1 <u>Security Investigations</u> The \$2,000 increase reflects payments for security investigations/reinvestigations for employees requiring security clearances.			2
3 <u>Mission Critical Contract Support Staff</u> Increased yearly costs for critical staffing of support personnel has not aligned with OSG's yearly funding base. The heavy workload of the Office requires contractor support of OSG for legal research, consulting, administrative and technical support to process our briefs and other legal documents in preparation for submission to the Court.			665
4 <u>Database Development and Enhancements (Automated ReCommendation System - ARCS)</u> ARCS is a vital repository of OSG's substantive and strategic thinking about recurring legal questions and is a valuable resource as it allows OSG attorneys to quickly and comprehensively search for past work product related to matters pending before the Office. OSG attorneys rely on ARCS multiple times each day, and it improves the efficiency, quality, and consistency of OSG's work. Funding will allow OSG to: 1) procure contract support to operate and maintain the ARCS system; 2) implement enhancements and necessary upgrades as directed by OCIO and other IT investment requirements; and 3) procure Lexis Search Advantage (LSA) resources and its platform. OSG has not received base funding to cover operations and maintenance, enhancements, audit, and hosting expenses associated with the system, and its budget is too small to support this unfunded, but vital, IT system.			325
Subtotal, Other Adjustments	0	0	992
TOTAL DIRECT TECHNICAL and BASE ADJUSTMENTS	0	0	1,064

F. Crosswalk of 2025 Availability

Crosswalk of 2025 Availability

Office of the Solicitor General
Salaries and Expenses
(Dollars in Thousands)

Program Activity	FY 2025 Actual			Reprogramming/Transfers			Carryover	Recoveries/ Refunds	2025 Availability		
	Positions	Actual FTE	Amount	Positions	Est. FTE	Amount	Amount	Amount	Positions	Est. FTE	Amount
Conduct of Supreme Court proceedings	55	49	15,342	0	0	680	0	0	55	49	16,022
Total Direct	55	49	15,342	0	0	680	0	0	55	49	16,022
Balance Rescission			0								0
Total Direct with Rescission			15,342								15,342
Reimbursable FTE		0			0		0			0	
Total Direct and Reimb. FTE		49			0		0			49	
Other FTE:											
LEAP		0			0		0			0	
Overtime		0			0		0			0	
Grand Total, FTE		49			0		0			49	

Reprogramming/Transfers

\$350K transfer from OLC to OSG to cover critical contracting expenses
\$330K transfer to OSG from GLA ALS account

Carryover:

Recoveries/Refunds:

G. Crosswalk of 2026 Availability

Crosswalk of 2026 Availability

Office of the Solicitor General
Salaries and Expenses
(Dollars in Thousands)

Program Activity	2026 Enacted			Reprogramming/Transfers			Carryover	Recoveries/ Refunds	2026 Availability		
	Positions	Estim. FTE	Amount	Positions	Estim. FTE	Amount	Amount	Amount	Positions	Estim. FTE	Amount
Conduct of Supreme Court proceedings	55	55	15,342	0	0	0	330	0	55	55	15,672
Total Direct	55	55	15,342	0	0	0	330	0	55	55	15,672
Balance Rescission			0								0
Total Direct with Rescission			15,342								15,342
Reimbursable FTE		0			0		0			0	
Total Direct and Reimb. FTE		55			0		330			55	
Other FTE:											
LEAP		0			0		0			0	
Overtime		0			0		0			0	
Grand Total, FTE		55			0		330			55	

Reprogramming/Transfers

Carryover:

Recoveries/Refunds:

I. Detail of Permanent Positions by Category

Detail of Permanent Positions by Category

Office of the Solicitor General
Salaries and Expenses
(Dollars in Thousands)

Category	2025 Enacted		2026 Enacted		2027 Request				
	Direct Pos.	Reimb. Pos.	Direct Pos.	Reimb. Pos.	ATBs	Program Increases	Program Offsets	Total Direct Pos.	Total Reimb. Pos.
Clerical and Office Services (0300-0399)	17	0	17	0	0	0	0	17	0
Accounting and Budget (500-599)	1	0	1	0	0	0	0	1	0
Paralegals / Other Law (900-998)	4	0	4	0	0	0	0	4	0
Attorneys (905)	23	0	23	0	0	0	0	23	0
Paralegal Specialist (0950)	7	0	7	0	0	0	0	7	0
Information & Arts (1000-1099)	2	0	2	0	0	0	0	2	0
Information Technology Mgmt (2210-2299)	1	0	1	0	0	0	0	1	0
Total	55	0	55	0	0	0	0	55	0
Headquarters (Washington, D.C.)	0	0	0	0	0	0	0	0	0
U.S. Field	0	0	0	0	0	0	0	0	0
Foreign Field	0	0	0	0	0	0	0	0	0
Total	0	0	0	0	0	0	0	0	0

K. Summary of Requirements by Object Class

Summary of Requirements by Object Class

Office of the Solicitor General

Salaries and Expenses

(Dollars in Thousands)

Object Class	2025 Actual		2026 Enacted		2027 Request		Increase/Decrease	
	Direct FTE	Amount	Direct FTE	Amount	Direct FTE	Amount	Direct FTE	Amount
11.1 Full-Time Permanent	49	5,808	55	6,031	55	6,044	0	13
11.3 Other than Full-Time Permanent	0	1,913	0	1,903	0	1,903	0	0
11.5 Other Personnel Compensation	0	333	0	490	0	490	0	0
<i>Overtime</i>	0	0	0	0	0	0	0	0
<i>Other Compensation</i>	0	0	0	0	0	0	0	0
11.8 Special Personal Services Payments	0	0	0	0	0	0	0	0
Total	49	8,054	55	8,424	55	8,437	0	13
Other Object Classes								
12.1 Civilian Personnel Benefits		2,619		2,405		2,330		-75
21.0 Travel and Transportation of Persons		14		39		39		0
23.1 Rental Payments to GSA		1,244		2,179		2,213		34
23.2 Rental Payments to Others		121		85		85		0
23.3 Communications, Utilities, and Miscellaneous Charges		159		153		153		0
24.0 Printing and Reproduction		293		302		302		0
25.1 Advisory and Assistance Services		1,030		495		495		0
25.2 Other Services from Non-Federal Sources		168		36		36		0
25.3 Other Goods and Services from Federal Sources		805		864		964		100
25.4 Operation and Maintenance of Facilities		5		36		38		2
25.7 Operation and Maintenance of Equipment		642		581		1,241		660
26.0 Supplies and Materials		47		68		68		0
31.0 Equipment		0		5		5		0
Total Obligations		15,201		15,672		16,406		734
Net of:								
Unobligated Balance, Start-of-Year		0		-330		0		330
Transfers/Reprogramming		0		0		0		0
Reallocations		-680						
Recoveries/Refunds				0		0		0
Balance Rescission		0		0		0		0
Unobligated End-of-Year, Available		330		0		0		0
Unobligated End-of-Year, Expiring		491		0		0		0
Total Direct Requirements	0	15,342	0	15,342	0	16,406	0	1,064
Reimbursable FTE								
Full-Time Permanent	0		0		0		0	