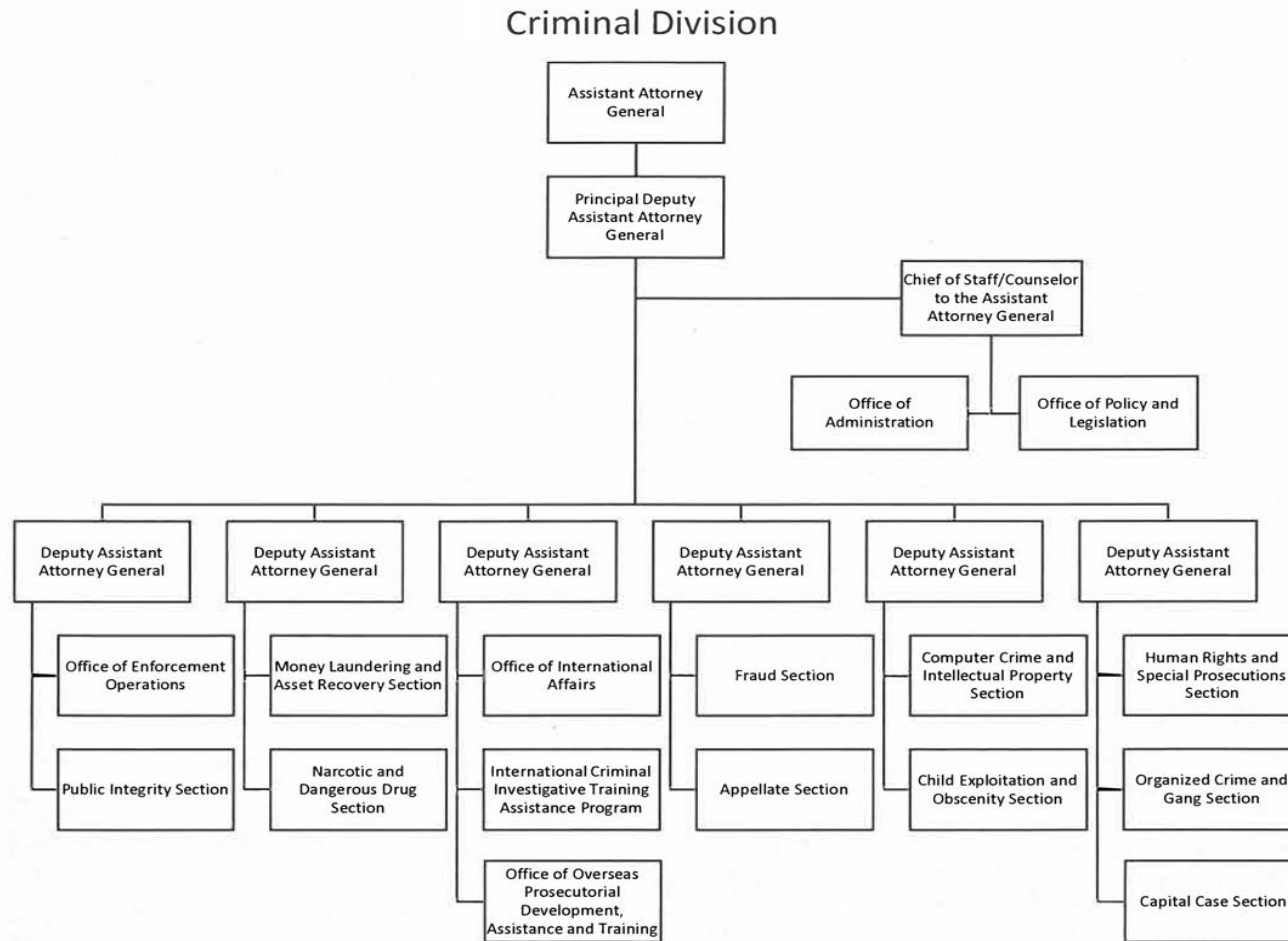


A: Organizational Chart



Approved by: *Loretta E. Lynch* Date: 8-29-2016
 LORETTA E. LYNCH
 Attorney General

Summary of Requirements

Criminal Division
Salaries and Expenses
(Dollars in Thousands)

	FY 2020 Request		
	Positions	Estimate FTE	Amount
2018 Enacted 1/	680	646	181,745
Total 2018 Enacted	680	646	181,745
2019 Continuing Resolution	680	680	181,745
Technical Adjustments			
Expected Change from FY 2019 CR	49	49	5,633
Total Technical Adjustments	49	49	5,633
Base Adjustments			
Pay and Benefits	0	0	2,187
Domestic Rent and Facilities	0	0	144
Other Adjustments	0	0	24
Foreign Expenses	0	0	-88
Total Base Adjustments	0	0	2,267
Total Technical and Base Adjustments	49	49	7,900
2020 Current Services	729	729	189,645
2020 Total Request	729	729	189,645
2019 - 2020 Total Change	49	49	7,900

^{1/} FY 2018 FTE is actual

Summary of Requirements

Criminal Division
Salaries and Expenses
(Dollars in Thousands)

Program Activity	FY 2018 Enacted			FY 2019 Continuing Resolution			FY 2020 Technical and Base Adjustments			FY 2020 Current Services		
	Positions	Actual FTE	Amount	Positions	Est. FTE	Amount	Positions	Est. FTE	Amount	Positions	Est. FTE	Amount
Enforcing Federal Criminal Laws	680	646	181,745	680	680	181,745	49	49	7,900	729	729	189,645
Total Direct	680	646	181,745	680	680	181,745	49	49	7,900	729	729	189,645
Balance Rescission			0			0			0			0
Total Direct with Rescission			181,745			181,745			7,900			189,645
Reimbursable FTE		308			88			48			136	
Total Direct and Reimb. FTE		954			768			97			865	
Other FTE:												
LEAP		0			0			0			0	
Overtime		0			0			0			0	
Grand Total, FTE		954			768			97			865	
Suballotments and Direct Collections FTE					262			0			262	
Other FTE:												
LEAP												
Overtime												
Grand Total, FTE		954			1,030			97			1,127	

Program Activity	2020 Increases			2020 Offsets			2020 Request		
	Positions	Est. FTE	Amount	Positions	Est. FTE	Amount	Positions	Est. FTE	Amount
Enforcing Federal Criminal Laws	0	0	0	0	0	0	729	729	189,645
Total Direct	0	0	0	0	0	0	729	729	189,645
Balance Rescission			0			0			0
Total Direct with Rescission			0			0			189,645
Reimbursable FTE		0			0			136	
Total Direct and Reimb. FTE		0			0			865	
Suballotments and Direct Collections FTE								262	
Other FTE:									
LEAP		0			0			0	
Overtime		0			0			0	
Grand Total, FTE		0			0			1,127	

Note: The Suballotments and Direct Collections positions and FTE were reflected under Reimbursable positions and FTE in FY 2018 and prior fiscal years. They are broken out separately beginning with FY 2019.

Resources by Department of Justice Strategic Goal and Objective
 Criminal Division
 Salaries and Expenses
 (Dollars in Thousands)

Strategic Goal and Strategic Objective	FY 2018 Enacted			FY 2019 Continuing Resolution			FY 2020 Current Services		FY 2020 Increases		FY 2020 Offsets		FY 2020 Total Request		
	Direct & Reimb FTE	Sub-Allot/Dir Coll FTE	Direct Amount	Direct & Reimb FTE	Sub-Allot/Dir Coll FTE	Direct Amount	Direct & Reimb FTE	Direct Amount	Direct & Reimb FTE	Direct Amount	Direct & Reimb FTE	Direct Amount	Direct & Reimb FTE	Sub-Allot/Dir Coll FTE	Direct Amount
Goal 1 Enhance National Security and Counter the Threat of Terrorism															
1.1 Disrupt and defeat terrorist operations	85	0	9,993	61	24	9,993	83	11,572	0	0	0	0	83	24	11,572
1.2 Combat cyber-based threats and attacks	100	0	21,579	85	24	21,579	96	23,181	0	0	0	0	96	24	23,181
1.3 Combat unauthorized disclosures, insider threats, and hostile intelligence activities	27	0	5,789	22	7	5,789	25	6,341	0	0	0	0	25	7	6,341
Subtotal, Goal 1	212	0	37,361	168	55	37,361	204	41,094	0	0	0	0	204	55	41,094
Goal 2 Secure the Borders and Enhance Immigration Enforcement and Adjudication															
2.1 Prioritize criminal immigration enforcement	43	0	8,718	32	15	8,718	32	8,569	0	0	0	0	32	15	8,569
2.2 Ensure an immigration system that respects the rule of law, protects the safety of U.S. Citizens and serves the national interest	16	0	4,721	17	0	4,721	17	4,624	0	0	0	0	17	0	4,624
Subtotal, Goal 2	59	0	13,439	49	15	13,439	49	13,193	0	0	0	0	49	15	13,193
Goal 3 Reduce Violent Crime and Promote Public Safety															
3.1 Combat violent crime, promote safe communities, and uphold the rights of victims of crime	201	0	38,975	177	35	38,975	212	42,016	0	0	0	0	212	35	42,016
3.2 Disrupt and dismantle drug trafficking organizations to curb opioid and other illicit drug use in our nation	216	0	42,804	171	59	42,804	178	43,030	0	0	0	0	178	59	43,030
Subtotal, Goal 3	417	0	81,779	348	94	81,779	390	85,046	0	0	0	0	390	94	85,046
Goal 4 Promote Rule of Law, Integrity, and Good Government															
4.1 Uphold the rule of law and integrity in the proper administration of justice	243	0	42,571	181	96	42,571	196	43,104	0	0	0	0	196	96	43,104
4.2 Defend first amendments rights to exercise religion and free speech	8	0	1,627	6	2	1,627	9	2,210	0	0	0	0	9	2	2,210
4.4 Achieve management excellence	15	0	4,968	16	0	4,968	17	4,998	0	0	0	0	17	0	4,998
Subtotal, Goal 4	266	0	49,166	203	98	49,166	222	50,312	0	0	0	0	222	98	50,312
TOTAL	954	0	181,745	768	262	181,745	865	189,645	0	0	0	0	865	262	189,645

Note: The Suballotments and Direct Collections FTE were reflected under Reimbursable FTE in FY 2018 and prior fiscal years. They are broken out separately beginning with FY 2019.

Justifications for Technical and Base Adjustments

Criminal Division
Salaries and Expenses
(Dollars in Thousands)

	Positions	Estimate FTE	Amount
Technical Adjustments			
1 Expected Change from FY 2019 CR	49	49	5,633
Subtotal, Technical Adjustments	49	49	5,633
Pay and Benefits			
1 <u>Changes in Compensable Days</u> The increased cost for one compensable day in FY 2020 compared to FY 2019 is calculated by dividing the FY 2018 estimated personnel compensation, \$93,343, and applicable benefits, \$20,886, by 261 compensable days.	0	0	438
2 <u>FERS Rate Increase</u> Per 2018 OMB Circular A-11 section 32, Personnel Compensation, Benefits, and Related Costs, the agency contribution of regular retirement under FERS will increase from 13.7% to 16%. The FERS contribution for Law Enforcement retirement will increase from 30.1% to 33.4%. The amount requested, \$1,588,000, represents the funds needed to cover this increase.	0	0	1,588
3 <u>Health Insurance</u> Effective January 2020, the component's contribution to Federal employees' health insurance increases by 2.9 percent. Applied against the 2019 estimate of \$5,339,000, the additional amount required is \$156,000.	0	0	156
4 <u>Retirement</u> Agency retirement contributions increase as employees under CSRS retire and are replaced by FERS employees. Based on U.S. Department of Justice Agency estimates, we project that the DOJ workforce will convert from CSRS to FERS at a rate of 0.8 percent per year, for both LEO and Non-LEO, based on the past 5 years of DOJ retirement data. The requested increase of \$5,000 is necessary to meet our increased retirement obligations as a result of this conversion.	0	0	5
Subtotal, Pay and Benefits	0	0	2,187
Domestic Rent and Facilities			
1 <u>Guard Service</u> This includes Department of Homeland Security (DHS) Federal Protective Service charges, Justice Protective Service charges and other security services across the country. The requested increase of \$144,000 is required to meet these commitments.	0	0	144
Subtotal, Domestic Rent and Facilities	0	0	144

Justifications for Technical and Base Adjustments

Criminal Division
Salaries and Expenses
(Dollars in Thousands)

	Positions	Estimate FTE	Amount
Other Adjustments			
1 <u>Security Investigations</u> The \$24,000 increase reflects payments to the Office of Personnel Management for security reinvestigations for employees requiring security clearances.	0	0	24
Subtotal, Other Adjustments	0	0	24
Foreign Expenses			
1 <u>Capital Security Cost Sharing</u> Per P.L. 108-447 and subsequent acts, all agencies with personnel overseas subject to chief of mission authority... shall participate and provide funding in advance for their share of costs of providing new, safe, secure U.S. diplomatic facilities, without offsets, on the basis of the total overseas presence of each agency as determined by the Secretary of State. Originally authorized for FY 2000-2004, the program has been extended annually by OMB and Congress and has also been expanded beyond new embassy construction to include maintenance and renovation costs of the new facilities. For the purpose of this program, State's personnel totals for DOJ include current and projected staffing. The estimated cost to the Department, as provided by State, for FY 2020 is \$1,334,063. CRM currently has 12 positions overseas, and a decrease in funding for the amount of \$131,000 is requested for this account.	0	0	-131
2 <u>ICASS</u> The Department of State charges agencies for administrative support provided to staff based overseas. Charges are determined by a cost distribution system. The FY 2020 request is based on the projected FY 2018 bill for post invoices and other ICASS costs.	0	0	43
Subtotal, Foreign Expenses	0	0	-88
TOTAL DIRECT TECHNICAL and BASE ADJUSTMENTS	49	49	7,900
ATB Reimbursable FTE Changes			
1 ATB Reimbursable FTE Adjustment	0	48	0
Subtotal, ATB Reimbursable FTE Changes	0	48	0

Crosswalk of 2018 Availability

Criminal Division
Salaries and Expenses
(Dollars in Thousands)

Program Activity	FY 2018 Enacted			Reprogramming/Transfers			Carryover	Recoveries/ Refunds	FY 2018 Availability		
	Position s	Actual FTE	Amount	Position s	Actual FTE	Amount	Amount	Amount	Position s	Actual FTE	Amount
Enforcing Federal Criminal Laws	680	646	181,745	0	0	1,000	5,363	33	680	646	188,141
Total Direct	680	646	181,745	0	0	1,000	5,363	33	680	646	188,141
Balance Rescission			0			0	0	0			0
Total Direct with Rescission			181,745			1,000	5,363	33			188,141
Reimbursable FTE		308			0					308	
Total Direct and Reimb. FTE		954			0					954	
Other FTE:											
LEAP FTE		0			0					0	
Overtime		0			0					0	
Grand Total, FTE		954			0					954	

Reprogramming/Transfers: Funding of \$1 million was reallocated from GLA's ALS account to the Criminal Division.

Carryover: Funds carried over into FY 2018 from GLA's FY 2017 no-year account.

Recoveries/Refunds: Direct recoveries from GLA's FY 2018 no-year account total \$33,000.

Crosswalk of 2019 Availability

Criminal Division
Salaries and Expenses
(Dollars in Thousands)

Program Activity	FY 2019 Continuing Resolution			Reprogramming/Transfers			Carryover	Recoveries/ Refunds	FY 2019 Availability		
	Position s	Est. FTE	Amount	Position s	Est. FTE	Amount	Amount	Amount	Position s	Est. FTE	Amount
Enforcing Federal Criminal Laws	680	680	181,745	0	0	0	6,299	0	680	680	188,044
Total Direct	680	680	181,745	0	0	0	6,299	0	680	680	188,044
Balance Rescission			0			0	0	0			0
Total Direct with Rescission			181,745			0	6,299	0			188,044
Reimbursable FTE		88			0					88	
Total Direct and Reimb. FTE		768			0					768	
Other FTE:											
LEAP FTE		0			0					0	
Overtime		0			0					0	
Grand Total, FTE		768			0					768	
Suballotments FTE		262								262	

Reprogramming/Transfers:

Carryover: Funds were carried forward into FY 2019 from GLA's FY 2018 no year account.

Recoveries/Refunds:

Summary of Reimbursable Resources

Criminal Division
Salaries and Expenses
(Dollars in Thousands)

Collections by Source	2018 Actual			2019 Estimate			2020 Request			Increase/Decrease		
	Reimb. Pos.	Reimb. FTE	Amount	Reimb. Pos.	Reimb. FTE	Amount	Reimb. Pos.	Reimb. FTE	Amount	Reimb. Pos.	Reimb. FTE	Amount
All Other Sources	52	46	38,593	20	5	15,000	5	5	15,000	-15	0	0
Asset Forfeiture Fund	112	94	57,998	0	0	0	0	0	0	0	0	0
Department of Health and Human Services	68	57	22,108	0	0	0	0	0	0	0	0	0
Department of State	167	95	132,277	116	83	150,000	131	131	150,000	15	48	0
Interagency Crime and Drug Enforcement	13	16	2,156	0	0	0	0	0	0	0	0	0
Budgetary Resources	412	308	253,132	136	88	165,000	136	136	165,000	0	48	0

Obligations by Program Activity	2018 Actual			2019 Estimate			2020 Request			Increase/Decrease		
	Reimb. Pos.	Reimb. FTE	Amount	Reimb. Pos.	Reimb. FTE	Amount	Reimb. Pos.	Reimb. FTE	Amount	Reimb. Pos.	Reimb. FTE	Amount
Enforcing Federal Criminal Laws	412	308	253,132	136	88	165,000	136	136	165,000	0	48	0
Budgetary Resources	412	308	253,132	136	88	165,000	136	136	165,000	0	48	0

Note: The Suballocments and Direct Collections positions and FTE were reflected under Reimbursable positions and FTE in FY 2018 and prior fiscal years. They are broken out separately beginning with FY 2019.

Summary of Sub-Allotments and Direct Collections Resources

Criminal Division
Salaries and Expenses
(Dollars in Thousands)

Collections by Source	2018 Actual			2019 Estimate			2020 Request			Increase/Decrease		
	Suballot Dir Coll Pos.	Suballot Dir Coll FTE	Amount	Suballot Dir Coll Pos.	Suballot Dir Coll FTE	Amount	Suballot Dir Coll Pos.	Suballot Dir Coll FTE	Amount	Sub-Allot. Pos.	Sub-Allot. FTE	Amount
Interagency Crime & Drug Enforcement	0	0	0	13	13	2,077	13	13	2,099	0	0	22
Asset Forfeiture Fund	0	0	0	112	112	60,349	112	112	60,349	0	0	0
Health Care Fraud Abuse and Control	0	0	0	106	77	34,730	116	77	34,730	10	0	0
Debt Collection 3% Fund	0	0	0	64	60	33,172	64	60	33,172	0	0	0
Budgetary Resources	0	0	0	295	262	130,328	305	262	130,350	10	0	22

Obligations by Program Activity	2018 Actual			2019 Estimate			2020 Request			Increase/Decrease		
	Suballot Dir Coll Pos.	Suballot Dir Coll FTE	Amount	Suballot Dir Coll Pos.	Suballot Dir Coll FTE	Amount	Suballot Dir Coll Pos.	Suballot Dir Coll FTE	Amount	Sub-Allot. Pos.	Sub-Allot. FTE	Amount
Enforcing Federal Criminal Laws	0	0	0	295	262	130,328	305	262	130,350	10	0	22
Budgetary Resources	0	0	0	295	262	130,328	305	262	130,350	10	0	22

Note: The Suballotments and Direct Collections positions and FTE were reflected under Reimbursable positions and FTE in FY 2018 and prior fiscal years. They are broken out separately beginning with FY 2019.

Detail of Permanent Positions by Category

Criminal Division
Salaries and Expenses
(Dollars in Thousands)

Category	FY 2018 Enacted			FY 2019 Continuing Resolution			FY 2020 Request					
	Direct Pos.	Reimb. Pos.	SubAllot - Dir Coll Pos.	Direct Pos.	Reimb. Pos.	SubAllot - Dir Coll Pos.	ATBs	Program Increases	Program Offsets	Total Direct Pos.	Total Reimb. Pos.	SubAllot - Dir Coll Pos.
Miscellaneous Operations (001-099)	1	0	0	1	0	0	0	0	0	1	0	0
Security Specialists (080)	6	0	0	6	0	1	0	0	0	6	0	1
Social Science, Psychology, Welfare (0100-0199)	7	0	0	7	0	3	0	0	0	7	0	3
Personnel Management (0200-0260)	21	3	0	21	2	1	0	0	0	21	2	1
Clerical and Office Services (0300-0399)	125	98	0	125	62	47	0	0	0	125	62	47
Accounting and Budget (500-599)	10	12	0	9	0	10	0	0	0	9	0	10
Paralegals / Other Law (900-998)	12	8	0	12	8	4	-1	0	0	11	8	4
Attorneys (905)	421	274	0	421	59	223	19	0	0	440	59	233
Information & Arts (1000-1099)	2	3	0	2	0	0	0	0	0	2	0	0
Paralegal Specialist (0950)	39	5	0	39	0	3	31	0	0	70	0	3
Business & Industry (1100-1199)	4	4	0	4	2	2	0	0	0	4	2	2
Equipment/Facilities Services (1600-1699)	2	0	0	2	0	0	0	0	0	2	0	0
Education (1700-1799)	1	1	0	0	0	1	0	0	0	0	0	1
Investigation (1800-1899)	0	0	0	1	0	0	0	0	0	1	0	0
Inspection, Investigation, Enforcement Analyst(1801)	14	2	0	14	2	0	0	0	0	14	2	0
Transportation (2100-2199)	0	1	0	0	1	0	0	0	0	0	1	0
Information Technology Mgmt (2210-2299)	15	0	0	15	0	0	0	0	0	15	0	0
Bankruptcy Analyst	0	0	0	1	0	0	0	0	0	1	0	0
Total	680	412	0	680	136	295	49	0	0	729	136	305
Headquarters Washington D.C.	667	215	0	667	99	295	49	0	0	716	99	305
US Fields	0	0	0	0	0	0	0	0	0	0	0	0
Foreign Field	13	197	0	13	37	0	0	0	0	13	37	0
Total	680	412	0	680	136	295	49	0	0	729	136	305

Note: The Suballotments and Direct Collections positions were reflected under Reimbursable positions in FY 2018 and prior fiscal years. They are broken out separately beginning with FY 2019.

Summary of Requirements by Object Class

Criminal Division
Salaries and Expenses
(Dollars in Thousands)

Object Class	FY 2018 Actual		FY 2019 Continuing		FY 2020 Request		Increase/Decrease	
	Act. FTE	Amount	Direct FTE	Amount	Direct FTE	Amount	Direct FTE	Amount
11.1 - Full-time permanent	646	68,432	680	74,549	729	73,691	49	-858
11.3 - Other than full-time permanent	0	6,912	0	8,049	0	7,830	0	-219
11.5 - Other personnel compensation	0	1,546	0	2,298	0	2,242	0	-56
<i>Overtime</i>	0	0	0	0	0	0	0	0
<i>Other Compensation</i>	0	0	0	0	0	0	0	0
11.8 - Special personal services payments	0	2,010	0	1,535	0	1,583	0	48
Total	646	78,900	680	86,431	729	85,346	49	-1,085
Other Object Classes								
12.1 - Civilian personnel benefits		23,533		26,177		27,553	0	1,376
13.0 - Benefits for former personnel		25		20		21	0	1
21.0 - Travel and transportation of persons		5,253		5,570		5,743	0	173
22.0 - Transportation of things		54		82		85	0	3
23.1 - Rental payments to GSA		26,656		29,501		30,415	0	914
23.2 - Rental payments to others		1,829		1,650		1,701	0	51
23.3 - Communications, utilities, and miscellaneous charges		4,261		2,750		2,835	0	85
24.0 - Printing and reproduction		117		138		142	0	4
25.1 - Advisory and assistance services		7,388		10,685		11,016	0	331
25.2 - Other services from non-federal sources		3,755		8,359		7,510	0	-849
25.3 - Other goods and services from federal sources		17,075		8,077		8,407	0	330
25.4 - Operation and maintenance of facilities		4,776		3,579		3,690	0	111
25.6 - Medical care		0		24		25	0	1
25.7 - Operation and maintenance of equipment		6,258		3,801		3,919	0	118
26.0 - Supplies and materials		803		750		773	0	23
31.0 - Equipment		736		450		464	0	14
Total Obligations		181,419		188,044		189,645	0	1,601
Net of:								
Unobligated Balance, Start-of-Year		-5,363		-6,299		0	0	6,299
Transfers/Reprogramming		-1,000		0		0	0	0
Recoveries/Refunds		-33		0		0	0	0
Balance Rescission		0		0		0	0	0
Unobligated End-of-Year, Available		6,299		0		0	0	0
Unobligated End-of-Year, Expiring		423		0		0	0	0
Total Direct Requirements		181,745		181,745		189,645		7,900
Reimbursable FTE								
Full-Time Permanent	308		88		136		48	0
Suballotments and Direct Collections FTE								
Full-Time Permanent	0		262		262		0	0

Note: The Suballotments and Direct Collections FTE were reflected under Reimbursable FTE in FY 2018 and prior fiscal years. They are broken out separately beginning with FY 2019.