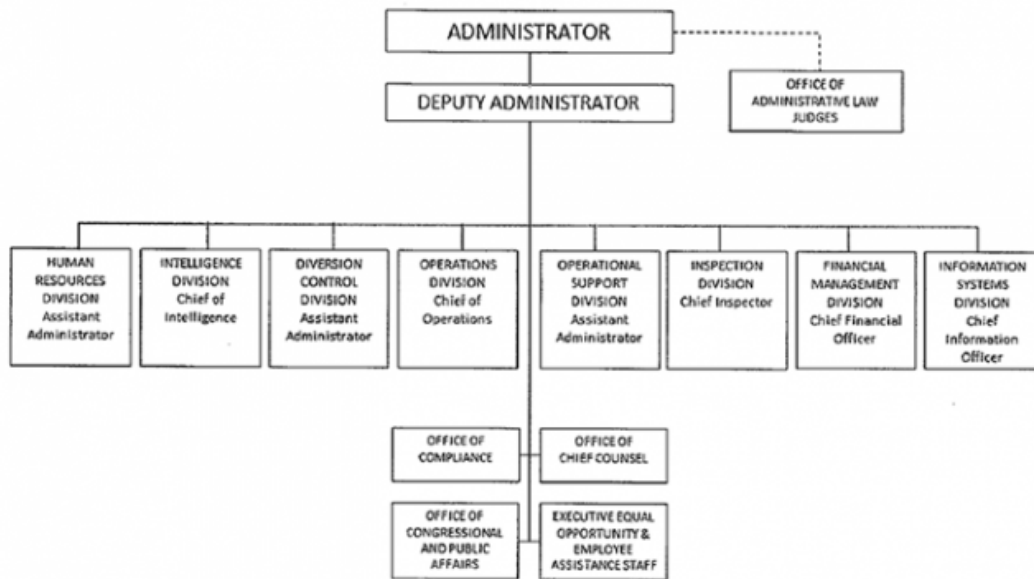


# DRUG ENFORCEMENT ADMINISTRATION



Approved by:

*W.P. Barr*  
WILLIAM P. BARR  
Attorney General

Date:

*3/25/2019*

## B. Summary of Requirements

**Summary of Requirements**

Drug Enforcement Administration

Salaries and Expenses

(Dollars in Thousands)

	FY 2026 Request		
	Positions	Estimate FTE	Amount
<b>2024 Enacted 1/</b>	<b>7,289</b>	<b>6,338</b>	<b>2,567,000</b>
<b>Total 2024 Enacted</b>	<b>7,289</b>	<b>6,338</b>	<b>2,567,000</b>
<b>2025 Enacted</b>	<b>6,832</b>	<b>6,366</b>	<b>2,567,000</b>
<b>Base Adjustments</b>			
Pay and Benefits	0	0	9,456
Domestic Rent and Facilities	0	0	8,572
Other Adjustments	607	625	126,952
Foreign Expenses	0	0	1,518
<b>Total Base Adjustments</b>	<b>607</b>	<b>625</b>	<b>146,498</b>
<b>Total Technical and Base Adjustments</b>	<b>607</b>	<b>625</b>	<b>146,498</b>
<b>2026 Current Services</b>	<b>7,439</b>	<b>6,991</b>	<b>2,713,498</b>
<b>Program Changes</b>			
Increases:			
Classified Program Increase	0	0	10,700
Subtotal, Increases	0	0	10,700
Offsets:			
Foreign Operations	-121	-121	-101,450
State and Local Training and Technical Assistance	-22	-20	-12,919
Training and Travel	0	0	-47,058
Contract Savings	0	0	-107,604
Subtotal, Offsets	-143	-141	-269,031
<b>Total Program Changes</b>	<b>-143</b>	<b>-141</b>	<b>-258,331</b>
<b>2026 Total Request</b>	<b>7,296</b>	<b>6,850</b>	<b>2,455,167</b>
Balance Rescission	0	0	-100,000
<b>2026 Total Request (with Rescission)</b>	<b>7,296</b>	<b>6,850</b>	<b>2,355,167</b>
<b>2025 - 2026 Total Change</b>	<b>464</b>	<b>484</b>	<b>-211,833</b>

<sup>1/</sup> FY 2024 FTE is actual

**Summary of Requirements**

Drug Enforcement Administration

Salaries and Expenses

(Dollars in Thousands)

Program Activity	FY 2024 Enacted			FY 2025 Enacted			FY 2026 Technical and Base Adjustments			FY 2026 Current Services		
	Positions	Actual FTE	Amount	Positions	Est. FTE	Amount	Positions	Est. FTE	Amount	Positions	Est. FTE	Amount
International Enforcement	924	763	485,618	817	723	477,514	-198	-198	-116,915	619	525	360,599
Domestic Enforcement	6,339	5,540	2,068,463	5,993	5,623	2,076,567	805	823	263,413	6,798	6,446	2,339,980
State and Local Assistance	26	20	12,919	22	20	12,919	0	0	0	22	20	12,919
<b>Total Direct</b>	<b>7,289</b>	<b>6,323</b>	<b>2,567,000</b>	<b>6,832</b>	<b>6,366</b>	<b>2,567,000</b>	<b>607</b>	<b>625</b>	<b>146,498</b>	<b>7,439</b>	<b>6,991</b>	<b>2,713,498</b>
Balance Rescission			0			0			0			0
<b>Total Direct with Rescission</b>			<b>2,567,000</b>			<b>2,567,000</b>			<b>146,498</b>			<b>2,713,498</b>
Reimbursable FTE		7			7			0			7	
<b>Total Direct and Reimb. FTE</b>		<b>6,330</b>			<b>6,373</b>			<b>625</b>			<b>6,998</b>	
Other FTE:												
LEAP		821			821			0			821	
Overtime		47			47			0			47	
<b>Grand Total, FTE</b>		<b>7,198</b>			<b>7,241</b>			<b>625</b>			<b>7,866</b>	
<i>Sub-Allotments and Direct Collections FTE</i>		855			823			0			823	

Program Activity	2026 Increases			2026 Offsets			2026 Request		
	Positions	Est. FTE	Amount	Positions	Est. FTE	Amount	Positions	Est. FTE	Amount
International Enforcement	0	0	0	-121	-121	-124,178	498	404	236,421
Domestic Enforcement	0	0	10,700	0	0	-131,934	6,798	6,446	2,218,746
State and Local Assistance	0	0	0	-22	-20	-12,919	0	0	0
<b>Total Direct</b>	<b>0</b>	<b>0</b>	<b>10,700</b>	<b>-143</b>	<b>-141</b>	<b>-269,031</b>	<b>7,296</b>	<b>6,850</b>	<b>2,455,167</b>
Balance Rescission			0			-100,000			-100,000
<b>Total Direct with Rescission</b>			<b>10,700</b>			<b>-369,031</b>			<b>2,355,167</b>
Reimbursable FTE		0			0			7	
<b>Total Direct and Reimb. FTE</b>		<b>0</b>			<b>-141</b>			<b>6,857</b>	
Other FTE:									
LEAP		0			0			821	
Overtime		0			0			47	
<b>Grand Total, FTE</b>		<b>0</b>			<b>-141</b>			<b>7,725</b>	
<i>Sub-Allotments and Direct Collections FTE</i>		0			-822			1	

**FY 2026 Program Increases/Offsets by Decision Unit**

Drug Enforcement Administration

Salaries and Expenses

(Dollars in Thousands)

Program Increases	Location of Description by	International Enforcement				Domestic Enforcement				State and Local Assistance			
		Positions	Agt./Atty.	Est. FTE	Amount	Positions	Agt./Atty.	Est. FTE	Amount	Positions	Agt./Atty.	Est. FTE	Amount
Classified Program Increase		0	0	0	0	0	0	0	10,700	0	0	0	0
<b>Total Program Increases</b>		<b>0</b>	<b>0</b>	<b>0</b>	<b>0</b>	<b>0</b>	<b>0</b>	<b>0</b>	<b>10,700</b>	<b>0</b>	<b>0</b>	<b>0</b>	<b>0</b>

Program Increases	Location of Description by	Total Increases			
		Positions	Agt./Atty.	Est. FTE	Amount
Classified Program Increase		0	0	0	10,700
<b>Total Program Increases</b>		<b>0</b>	<b>0</b>	<b>0</b>	<b>10,700</b>

Program Offsets	Location of Description by	International Enforcement				Domestic Enforcement				State and Local Assistance			
		Positions	Agt./Atty.	Est. FTE	Amount	Positions	Agt./Atty.	Est. FTE	Amount	Positions	Agt./Atty.	Est. FTE	Amount
Foreign Operations		-121	0	-121	-101,450	0	0	0	0	0	0	0	0
State and Local Training and Technical Assistance		0	0	0	0	0	0	0	0	-22	-8	-20	-12,919
Training and Travel		0	0	0	-14,632	0	0	0	-32,426	0	0	0	0
Contract Savings		0	0	0	-8,096	0	0	0	-99,508	0	0	0	0
<b>Total Program Offsets</b>		<b>-121</b>	<b>0</b>	<b>-121</b>	<b>-124,178</b>	<b>0</b>	<b>0</b>	<b>0</b>	<b>-131,934</b>	<b>-22</b>	<b>-8</b>	<b>-20</b>	<b>-12,919</b>

Program Offsets	Location of Description by	Total Offsets			
		Positions	Agt./Atty.	Est. FTE	Amount
Foreign Operations		-121	0	-121	-101,450
State and Local Training and Technical Assistance		-22	-8	-20	-12,919
Training and Travel		0	0	0	-47,058
Contract Savings		0	0	0	-107,604
<b>Total Program Offsets</b>		<b>-143</b>	<b>-8</b>	<b>-141</b>	<b>-269,031</b>

## Justifications for Technical and Base Adjustments

Drug Enforcement Administration  
Salaries and Expenses  
(Dollars in Thousands)

	Positions	Estimate	Amount
	FTE		
<b>Pay and Benefits</b>			
1 <u>Annualization of 2025 Pay Raise</u> Annualization of 2025 Pay Raise	0	0	6,163
2 <u>Employees Compensation Fund</u> Employees Compensation Fund: The \$221 increase reflects anticipated changes in payments to the Department of Labor for injury benefits under the Federal Employee Compensation Act.	0	0	221
3 <u>Health Insurance</u> Health Insurance: Effective January 2022, the component's contribution to Federal employees' health insurance increases by 0.7 percent. The additional amount required is \$3,072,000.	0	0	3,072
<b>Subtotal, Pay and Benefits</b>	<b>0</b>	<b>0</b>	<b>9,456</b>
<b>Domestic Rent and Facilities</b>			
1 <u>GSA Rent</u> GSA Rent: GSA will continue to charge rental rates that approximate those charged to commercial tenants for equivalent space and related services. The requested increase of \$3,048,000 is required to meet our commitment to GSA.	0	0	3,048
2 <u>Guard Service</u> Guard Service: Details of this request are available from the original request in the FY 2024 President's Budget.	0	0	1,291
3 <u>Moves - Prospectus</u> GSA requires all agencies to pay relocation costs associated with lease expirations. This request provides for the costs associated with new office relocations or stay in place reconfigurations caused by the expiration of leases in FY 2026 that are included in a GSA Prospectus.	0	0	4,233
<b>Subtotal, Domestic Rent and Facilities</b>	<b>0</b>	<b>0</b>	<b>8,572</b>
<b>Other Adjustments</b>			
1 <u>OCDETF Adjustment</u> OCDETF Adjustment: As part of the DOJ Agency RIF and Reorganization Plan, the Organized Crime Drug Enforcement Task Forces is being dissolved. The resources provided to participating DOJ components are now requested to be appropriated within each component's respective budget.	804	822	178,387
2 <u>Security Investigations</u> Security Investigations: Due to an increased price per case cost for initial Special Agent and Non-Agent background investigations, an increase of \$531,000 is required to support future mission critical hiring.	0	0	531
3 <u>Workforce Reshaping</u> Workforce Reshaping: The Administration has offered U.S. Government employees the opportunity to apply for a Deferred Resignation Program (DRP) in an effort to reduce the size of the Federal government. The information contained within this adjustment to base reflects the results of the first and second DRP for the Department of Justice. Component data only reflect those employees that were accepted into the program. Components used a variety of methods to estimate savings according to FY 2026 expectations and component best practices for employee cost estimation.	-197	-197	-51,966
<b>Subtotal, Other Adjustments</b>	<b>607</b>	<b>625</b>	<b>126,952</b>
<b>Foreign Expenses</b>			
1 <u>Capital Security Cost Sharing</u> Capital Security Cost Sharing: The Department of State (DOS) is in the midst of a multi-year capital security construction program, with a plan to build and maintain new diplomatic and consular compounds that meet security requirements set by the Secure Embassies Construction Act. As authorized by P.L. 108-447 and subsequent acts, all agencies with personnel overseas subject to chief of mission authority shall participate and provide funding in advance for their share of costs of providing new, safe, secure U.S. diplomatic facilities, without offsets, on the basis of the total overseas presence of each agency as determined by the Secretary of State.	0	0	-9,681
2 <u>Education Allowance</u> Education Allowance: For employees stationed abroad, components are obligated to meet the educational expenses incurred by an employee in providing adequate elementary (grades K-8) and secondary (grades 9-12) education for dependent children at post. \$2,566,000 reflects the change in cost to support existing staffing levels.	0	0	2,566
3 <u>Government Leased Quarters (GLQ)</u> Government Leased Quarters (GLQ): GLQ is a program managed by the Department of State (DOS) and provides government employees stationed overseas with housing and utilities. DOS exercises authority for leases and control of the GLQs and negotiates the lease for components. \$4,478,000 reflects the change in cost to support existing staffing levels.	0	0	4,478
4 <u>ICASS</u> The Department of State charges agencies for administrative support provided to staff based overseas. Charges are determined by a cost distribution system. The FY 2026 request is based on the projected FY 2024 bill for post invoices and other ICASS costs. \$3,651,000 reflects the change in cost to support existing staffing levels.	0	0	3,651
5 <u>Living Quarters Allowance (LQA)</u> Living Quarters Allowance (LQA): The living quarter allowance (LQA) is an allowance granted an employee for the annual cost of adequate living quarters for the employee and the employee's family at a foreign post. The rates are designed to cover the average cost of rent, heat, light, fuel, gas, electricity, water, local taxes, and insurance paid by the employee. Employees who receive the GLQ do not receive LQA and vice versa. -\$10,000 reflects the change in cost to support existing staffing levels.	0	0	-10
6 <u>Post Allowance - Cost of Living Allowance (COLA)</u> Post Allowance - Cost of Living Allowance (COLA): For employees stationed abroad, components are obligated to pay for their COLA. COLA is intended to reimburse certain excess costs and to compensate the employee for serving at a post where the cost of living, excluding the cost of quarters and the cost of education for eligible family members, is substantially higher than in the Washington, D.C. area. \$514,000, reflects the increase in cost to support existing staffing levels and is sufficient to cover these requirements.	0	0	514
<b>Subtotal, Foreign Expenses</b>	<b>0</b>	<b>0</b>	<b>1,518</b>
<b>TOTAL DIRECT TECHNICAL and BASE ADJUSTMENTS</b>	<b>607</b>	<b>625</b>	<b>146,498</b>

**Crosswalk of 2024 Availability**

Drug Enforcement Administration

Salaries and Expenses

(Dollars in Thousands)

Program Activity	FY 2024 Enacted			Reprogramming/Transfers			Carryover	Recoveries/ Refunds	FY 2024 Availability		
	Positions	Actual FTE	Amount	Positions	Est. FTE	Amount	Amount	Amount	Positions	Actual FTE	Amount
International Enforcement	924	763	485,618	0	0	0	0	11	924	763	485,629
Domestic Enforcement	6,339	5,540	2,068,463	0	0	132,523	109,993	19,766	6,339	5,540	2,330,745
State and Local Assistance	26	20	12,919	0	0	0	0	0	26	20	12,919
<b>Total Direct</b>	<b>7,289</b>	<b>6,323</b>	<b>2,567,000</b>	<b>0</b>	<b>0</b>	<b>132,523</b>	<b>109,993</b>	<b>19,777</b>	<b>7,289</b>	<b>6,323</b>	<b>2,829,293</b>
Balance Rescission			0			0	0	0			0
Total Direct with Rescission			2,567,000			132,523	109,993	19,777			2,829,293
Reimbursable FTE		7			0					7	
Total Direct and Reimb. FTE		6,330			0					6,330	
Other FTE:											
LEAP FTE		821			0					821	
Overtime		47			0					47	
Grand Total, FTE		7,198			0					7,198	
<i>Sub-Allotments and Direct Collections FTE</i>		855								855	

**Enacted:** FY2024 Enacted budget is \$2,567,000,000.

**Reprogramming/Transfers:** FY2024 transfers include \$80,000,000 from prior year expiring accounts to DEA's No Year Account, \$35,986,882 transfer in from the DOJ Spectrum Relocation Fund to DEA Spectrum, \$15,500,000 in 24/25 HIDTA transfers and \$1,036,000 in 23/24 HIDTA transfers.

**Carryover:** DEA'S Carry Forward to FY2024 consists of \$36,517,685 in Category B projects for Spectrum, \$61,412,964 in No-Year Operating funds, \$9,799,848 in 23/24 HIDTA funds, and \$2,262,853 in 23/24 OGV/Aircraft Proceeds funds.

**Recoveries/Refunds:** FY2024 Recoveries/Refunds are estimated at \$10,500,000 for Spectrum funds, \$125,000 for Land Mobile Radio funds, \$1,490,000 for No-Year Operating funds, and \$651,000 for 23/24 Direct funds. Also included in this line are Estimated Collections of \$1,500,000 in Annual fund Rebates, \$1,000,000 in 23/24 OGV Proceeds, and \$4,500,000 in 24/25 OGV Proceeds.

**Crosswalk of 2025 Availability**

Drug Enforcement Administration

Salaries and Expenses

(Dollars in Thousands)

Program Activity	FY 2025 Enacted			Reprogramming/Transfers			Carryover	Recoveries/ Refunds	FY 2025 Availability		
	Positions	Est. FTE	Amount	Positions	Est. FTE	Amount	Amount	Amount	Position s	Est. FTE	Amount
International Enforcement	817	723	477,514	0	0	0	0	0	817	723	477,514
Domestic Enforcement	5,993	5,623	2,076,567	0	0	126,737	114,177	15,151	5,993	5,623	2,332,631
State and Local Assistance	22	20	12,919	0	0	0	0	0	22	20	12,919
<b>Total Direct</b>	<b>6,832</b>	<b>6,366</b>	<b>2,567,000</b>	<b>0</b>	<b>0</b>	<b>126,737</b>	<b>114,177</b>	<b>15,151</b>	<b>6,832</b>	<b>6,366</b>	<b>2,823,064</b>
Balance Rescission			0			0	0	0			0
Total Direct with Rescission			2,567,000			126,737	114,177	15,151			2,823,064
Reimbursable FTE		7			0					7	
Total Direct and Reimb. FTE		6,373			0					6,373	
Other FTE:											
LEAP FTE		821			0					821	
Overtime		47			0					47	
Grand Total, FTE		7,241			0					7,241	
<i>Sub-Allotments and Direct Collections FTE</i>		823								823	

**Enacted:** FY2025 CR is estimated at \$2,567,000

**Reprogramming/Transfers:** FY2025 estimated transfers include \$74,000,000 from prior year expiring accounts to DEA's No Year Account, \$35,986,882 transfer in from the DOJ Spectrum Relocation Fund to DEA Spectrum, \$15,500,000 in 25/26 HIDTA transfers and \$1,250,000 in 24/25 HIDTA transfers.

**Carryover:** DEA'S Carry Forward to FY2025 consists of \$50,062,860 in Category B projects for Spectrum, \$49,434,417 in No-Year Operating funds, \$10,918,842 in 24/25 HIDTA funds, and \$3,760,490 in 24/25 OGV/Aircraft Proceeds funds.

**Recoveries/Refunds:** FY2025 Recoveries/Refunds are estimated at \$6,500,000 for Spectrum funds, \$10,000,000 for No-Year Operating funds, and \$651,000 for 24/25 Direct funds. Also included in this line are Estimated Collections of \$1,500,000 in Annual fund Rebates, \$1,000,000 in 24/25 OGV Proceeds, and \$4,500,000 in 25/26 OGV Proceeds.

**Summary of Reimbursable Resources**

Drug Enforcement Administration

Salaries and Expenses

(Dollars in Thousands)

Collections by Source	2024 Actual			2025 Estimate			2026 Request			Increase/Decrease		
	Reimb. Pos.	Reimb. FTE	Amount	Reimb. Pos.	Reimb. FTE	Amount	Reimb. Pos.	Reimb. FTE	Amount	Reimb. Pos.	Reimb. FTE	Amount
Department of Defense	6	1	2,642	6	1	3,200	6	1	3,200	0	0	0
Department of Homeland Security	0	0	1,238	0	0	1,500	0	0	1,500	0	0	0
Department of Justice	1	1	3,924	1	1	4,753	1	1	4,753	0	0	0
Department of State	2	1	15,954	2	1	19,326	2	1	19,326	0	0	0
Misc. Government	2	2	4,135	2	2	5,009	2	2	5,009	0	0	0
Misc. Non-Government	0	0	493	0	0	597	0	0	597	0	0	0
<b>Budgetary Resources</b>	<b>11</b>	<b>5</b>	<b>28,385</b>	<b>11</b>	<b>5</b>	<b>34,385</b>	<b>11</b>	<b>5</b>	<b>34,385</b>	<b>0</b>	<b>0</b>	<b>0</b>

Obligations by Program Activity	2024 Actual			2025 Estimate			2026 Request			Increase/Decrease		
	Reimb. Pos.	Reimb. FTE	Amount	Reimb. Pos.	Reimb. FTE	Amount	Reimb. Pos.	Reimb. FTE	Amount	Reimb. Pos.	Reimb. FTE	Amount
International Enforcement	10	4	21,162	10	4	25,635	10	4	25,635	0	0	0
Domestic Enforcement	1	1	7,223	1	1	8,750	1	1	8,750	0	0	0
State and Local Assistance	0	0	0	0	0	0	0	0	0	0	0	0
<b>Budgetary Resources</b>	<b>11</b>	<b>5</b>	<b>28,385</b>	<b>11</b>	<b>5</b>	<b>34,385</b>	<b>11</b>	<b>5</b>	<b>34,385</b>	<b>0</b>	<b>0</b>	<b>0</b>



**Summary of Sub-Allotments and Direct Collections Resources**

Drug Enforcement Administration

Salaries and Expenses

(Dollars in Thousands)

Sub-Allotments and Direct Collections	2024 Actual			2025 Estimate			2026 Request			Increase/Decrease		
	SubAllot- Dir Coll Pos	SubAllot- Dir Coll FTE	Amount	SubAllot- Dir Coll Pos	SubAllot- Dir Coll FTE	Amount	SubAllot- Dir Coll Pos	SubAllot- Dir Coll FTE	Amount	SubAllot- Dir Coll Pos	SubAllot- Dir Coll FTE	Amount
OCDETF	824	854	0	804	822	178,387	0	0	0	-804	-822	-178,387
AFF	1	1	0	1	1	226,001	1	1	226,001	0	0	0
<b>Budgetary Resources</b>	<b>825</b>	<b>855</b>	<b>0</b>	<b>805</b>	<b>823</b>	<b>404,388</b>	<b>1</b>	<b>1</b>	<b>226,001</b>	<b>-804</b>	<b>-822</b>	<b>-178,387</b>

Obligations by Program Activity	2024 Actual			2025 Estimate			2026 Request			Increase/Decrease		
	SubAllot- Dir Coll Pos	SubAllot- Dir Coll FTE	Amount	SubAllot- Dir Coll Pos	SubAllot- Dir Coll FTE	Amount	SubAllot- Dir Coll Pos	SubAllot- Dir Coll FTE	Amount	SubAllot- Dir Coll Pos	SubAllot- Dir Coll FTE	Amount
Domestic Enforcement	825	855	0	805	823	404,388	1	1	226,001	-804	-822	-178,387
<b>Budgetary Resources</b>	<b>825</b>	<b>855</b>	<b>0</b>	<b>805</b>	<b>823</b>	<b>404,388</b>	<b>1</b>	<b>1</b>	<b>226,001</b>	<b>-804</b>	<b>-822</b>	<b>-178,387</b>

**Detail of Permanent Positions by Category**  
Drug Enforcement Administration  
Salaries and Expenses  
(Dollars in Thousands)

Category	FY 2024 Enacted			FY 2025 Enacted			FY 2026 Request					
	Direct Pos.	Reimb. Pos.	SubAllot-Dir	Direct Pos.	Reimb. Pos.	SubAllot-Dir	ATBs	Program	Program	Total Direct	Total Reimb.	Total SubAllot-
			Coll Pos.			Coll Pos.		Increases	Offsets	Pos.	Pos.	Dir Coll Pos
Miscellaneous Operations (001-099)	43	0	0	23	0	0	0	0	0	23	0	0
Security Specialists (080)	82	0	0	95	0	0	0	0	0	95	0	0
Social Science, Psychology, Welfare (0100-0199)	10	0	0	10	0	0	0	0	0	10	0	0
Intelligence Series (132)	760	2	30	701	2	30	-5	0	-43	653	2	0
Human Resources Management (0200-0260)	89	0	0	83	0	0	0	0	0	83	0	0
Clerical and Office Services (0300-0399)	1,308	1	149	1,065	1	144	4	0	-92	977	1	0
Accounting and Budget (500-599)	283	0	0	315	0	0	0	0	0	315	0	0
Engineering and Architecture Group (800-899)	5	0	0	5	0	0	0	0	0	5	0	0
Paralegals / Other Law (900-998)	23	0	0	23	0	0	0	0	0	23	0	0
Attorneys (905)	115	0	0	115	0	0	0	0	0	115	0	0
Information & Arts (1000-1099)	49	0	0	47	0	0	0	0	0	47	0	0
Physical Sciences (1300-1399)	19	0	0	10	0	0	0	0	0	10	0	0
Library (1400-1499)	19	0	0	19	0	0	0	0	0	19	0	0
Mathematics and Statistics Group	6	0	0	6	0	0	0	0	0	6	0	0
Equipment/Facilities Services (1600-1699)	6	0	0	6	0	0	0	0	0	6	0	0
Education (1700-1799)	8	0	0	16	0	0	0	0	0	16	0	0
Misc. Inspectors/Investigative Assistants (1802)	182	0	0	100	0	0	0	0	0	100	0	0
Criminal Investigative Series (0082 & 1811)	3,665	8	646	3,665	8	631	631	0	-8	4,288	8	1
Supply Services (2000-2099)	35	0	0	32	0	0	0	0	0	32	0	0
Transportation (2100-2199)	6	0	0	6	0	0	0	0	0	6	0	0
Information Technology Mgmt (2210-2299)	254	0	0	165	0	0	-8	0	0	157	0	0
Motor Vehicle Operations (5703)	1	0	0	1	0	0	0	0	0	1	0	0
Others	3	0	0	3	0	0	0	0	0	3	0	0
Quality Assurance Series	3	0	0	6	0	0	0	0	0	6	0	0
Chemist Series	315	0	0	315	0	0	-15	0	0	300	0	0
<b>Total</b>	<b>7,289</b>	<b>11</b>	<b>825</b>	<b>6,832</b>	<b>11</b>	<b>805</b>	<b>607</b>	<b>0</b>	<b>-143</b>	<b>7,296</b>	<b>11</b>	<b>1</b>
Headquarters Washington D.C.	2,434	0	825	2,334	0	805	613	0	-22	2,925	0	1
US Fields	4,215	2	0	3,918	2	0	0	0	0	3,918	2	0
Foreign Field	640	9	0	580	9	0	-6	0	-121	453	9	0
<b>Total</b>	<b>7,289</b>	<b>11</b>	<b>825</b>	<b>6,832</b>	<b>11</b>	<b>805</b>	<b>607</b>	<b>0</b>	<b>-143</b>	<b>7,296</b>	<b>11</b>	<b>1</b>

## Financial Analysis of Program Changes

Drug Enforcement Administration

Salaries and Expenses

(Dollars in Thousands)

Grades	International Enforcement				Domestic Enforcement				State and Local Assistance			
	Program Increases		Program Decreases		Program Increases		Program Decreases		Program Increases		Program Decreases	
	Positions	Amount	Positions	Amount	Positions	Amount	Positions	Amount	Positions	Amount	Positions	Amount
Ungraded	0	0	-121	-7,692	0	0	0	0	0	0	-22	-2,983
<b>Total Positions and Annual Amount</b>	<b>0</b>	<b>0</b>	<b>-121</b>	<b>-7,692</b>	<b>0</b>	<b>0</b>	<b>0</b>	<b>0</b>	<b>0</b>	<b>0</b>	<b>-22</b>	<b>-2,983</b>
Lapse (-)	0	0	0	0	0	0	0	0	0	0	0	0
11.5 - Other personnel compensation		0		-2,113		0		0		0		-265
<b>Total FTEs and Personnel Compensation</b>	<b>0</b>	<b>0</b>	<b>-121</b>	<b>-9,805</b>	<b>0</b>	<b>0</b>	<b>0</b>	<b>0</b>	<b>0</b>	<b>0</b>	<b>-22</b>	<b>-3,248</b>
12.1 - Civilian personnel benefits		0		-16,358		0		0		0		-1,402
21.0 - Travel and transportation of persons		0		-5,882		1,070		-3,243		0		-719
22.0 - Transportation of things		0		-4,372		0		0		0		-10
23.1 - Rental payments to GSA		0		0		0		0		0		-366
23.2 - Rental payments to others		0		-7,494		0		0		0		0
23.3 - Communications, utilities, and miscellaneous charges		0		-1,862		0		0		0		0
24.0 - Printing and reproduction		0		0		0		0		0		0
25.1 - Advisory and assistance services		0		-16,064		3,210		-109,236		0		-691
25.2 - Other services from non-federal sources		0		-17,231		0		0		0		-3,338
25.3 - Other goods and services from federal sources		0		-2,875		0		0		0		-238
25.4 - Operation and maintenance of facilities		0		0		0		0		0		-3
25.6 - Medical care		0		-617		0		0		0		0
25.7 - Operation and maintenance of equipment		0		-5,311		2,140		-6,485		0		-10
26.0 - Supplies and materials		0		-428		0		0		0		-2,887
31.0 - Equipment		0		-35,879		4,280		-12,970		0		-7
<b>Total Program Change Requests</b>	<b>0</b>	<b>0</b>	<b>-121</b>	<b>-124,178</b>	<b>0</b>	<b>10,700</b>	<b>0</b>	<b>-131,934</b>	<b>0</b>	<b>0</b>	<b>-22</b>	<b>-12,919</b>

Grades	Total Program Changes	
	Positions	Amount
Ungraded	-143	-10,675
<b>Total Positions and Annual Amount</b>	<b>-143</b>	<b>-10,675</b>
Lapse (-)	0	0
11.5 - Other personnel compensation		-2,378
<b>Total FTEs and Personnel Compensation</b>	<b>-143</b>	<b>-13,053</b>
12.1 - Civilian personnel benefits		-17,760
21.0 - Travel and transportation of persons		-8,774
22.0 - Transportation of things		-4,382
23.1 - Rental payments to GSA		-366
23.2 - Rental payments to others		-7,494
23.3 - Communications, utilities, and miscellaneous charges		-1,862
24.0 - Printing and reproduction		0
25.1 - Advisory and assistance services		-122,781
25.2 - Other services from non-federal sources		-20,569
25.3 - Other goods and services from federal sources		-3,113
25.4 - Operation and maintenance of facilities		-3
25.6 - Medical care		-617
25.7 - Operation and maintenance of equipment		-9,666
26.0 - Supplies and materials		-3,315
31.0 - Equipment		-44,576
<b>Total Program Change Requests</b>	<b>-143</b>	<b>-258,331</b>

**Summary of Requirements by Object Class**

Drug Enforcement Administration

Salaries and Expenses

(Dollars in Thousands)

Object Class	FY 2024 Actual		FY 2025 Enacted		FY 2026 Request		Increase/Decrease	
	Act. FTE	Amount	Direct FTE	Amount	Direct FTE	Amount	Direct FTE	Amount
11.1 - Full-time permanent	6,338	708,558	6,366	684,433	6,850	670,171	484	-14,262
11.3 - Other than full-time permanent	0	4,573	0	4,417	0	4,325	0	-92
11.5 - Other personnel compensation	948	153,768	961	148,533	1,116	145,438	155	-3,095
<i>Overtime</i>	48	0	46	0	44	0	-2	0
<i>Other Compensation</i>	900	0	915	0	1,072	0	157	0
11.8 - Special personal services payments	0	319	0	308	0	302	0	-6
<b>Total</b>	<b>7,286</b>	<b>867,218</b>	<b>7,327</b>	<b>837,690</b>	<b>7,966</b>	<b>820,235</b>	<b>639</b>	<b>-17,455</b>
<b>Other Object Classes</b>								
12.1 - Civilian personnel benefits		550,175		531,443		520,369	0	-11,074
21.0 - Travel and transportation of persons		40,333		38,960		38,148	0	-812
22.0 - Transportation of things		18,413		17,786		17,416	0	-371
23.1 - Rental payments to GSA		237,884		229,784		224,996	0	-4,788
23.2 - Rental payments to others		38,451		37,142		36,368	0	-774
23.3 - Communications, utilities, and miscellaneous charges		59,886		57,847		56,641	0	-1,205
24.0 - Printing and reproduction		688		665		651	0	-14
25.1 - Advisory and assistance services		153,878		148,638		145,541	0	-3,097
25.2 - Other services from non-federal sources		178,854		172,764		169,164	0	-3,600
25.3 - Other goods and services from federal sources		145,699		140,738		137,805	0	-2,933
25.4 - Operation and maintenance of facilities		45,769		44,210		43,289	0	-921
25.6 - Medical care		2,402		2,321		2,272	0	-48
25.7 - Operation and maintenance of equipment		161,101		155,616		152,373	0	-3,243
25.8 - Subsistence and support of persons		0		0		0	0	0
26.0 - Supplies and materials		54,608		52,749		51,650	0	-1,099
31.0 - Equipment		93,406		90,225		88,345	0	-1,880
32.0 - Land and structures		64,516		62,319		61,020	0	-1,299
42.0 - Insurance claims and indemnities		1,825		1,763		1,726	0	-37
<b>Total Obligations</b>		<b>2,715,106</b>		<b>2,622,659</b>		<b>2,568,011</b>	<b>0</b>	<b>-54,648</b>
<b>Net of:</b>								
Unobligated Balance, Start-of-Year		-109,993		-114,177		-200,406	0	-86,229
Transfers/Reprogramming		-132,523		-126,737		-126,737	0	0
Recoveries/Refunds		-19,766		-15,151		-15,151	0	0
Balance Rescission		0		0		100,000	0	100,000
Unobligated End-of-Year, Available		114,177		200,406		29,450	0	-170,956
Unobligated End-of-Year, Expiring		0		0		0	0	0
<b>Total Direct Requirements</b>		<b>2,567,000</b>		<b>2,567,000</b>		<b>2,355,167</b>		<b>-211,833</b>
Reimbursable FTE								
Full-Time Permanent	7		7		7		0	0
<i>Sub-Allotments and Direct Collections FTE</i>	<i>855</i>		<i>823</i>		<i>1</i>		<i>-822</i>	

**Summary of Requirements by Grade**

Drug Enforcement Administration

Salaries and Expenses

(Dollars in Thousands)

Grades and Salary Ranges	2024 Enacted		2025 Enacted Continuing		2026 Request		Increase/Decrease	
	Direct Pos.	Amount	Direct Pos.	Amount	Direct Pos.	Amount	Direct Pos.	Amount
Ungraded	7,289	0	6,832	0	7,296	0	464	0
<b>Total, Appropriated Positions</b>	<b>7,289</b>	<b>0</b>	<b>6,832</b>	<b>0</b>	<b>7,296</b>	<b>0</b>	<b>464</b>	<b>0</b>
<b>Average SES Salary</b>	<b>0</b>		<b>0</b>		<b>0</b>			
<b>Average GS Salary</b>	<b>0</b>		<b>0</b>		<b>0</b>			
<b>Average GS Grade</b>	<b>#N/A</b>		<b>#N/A</b>		<b>#N/A</b>			