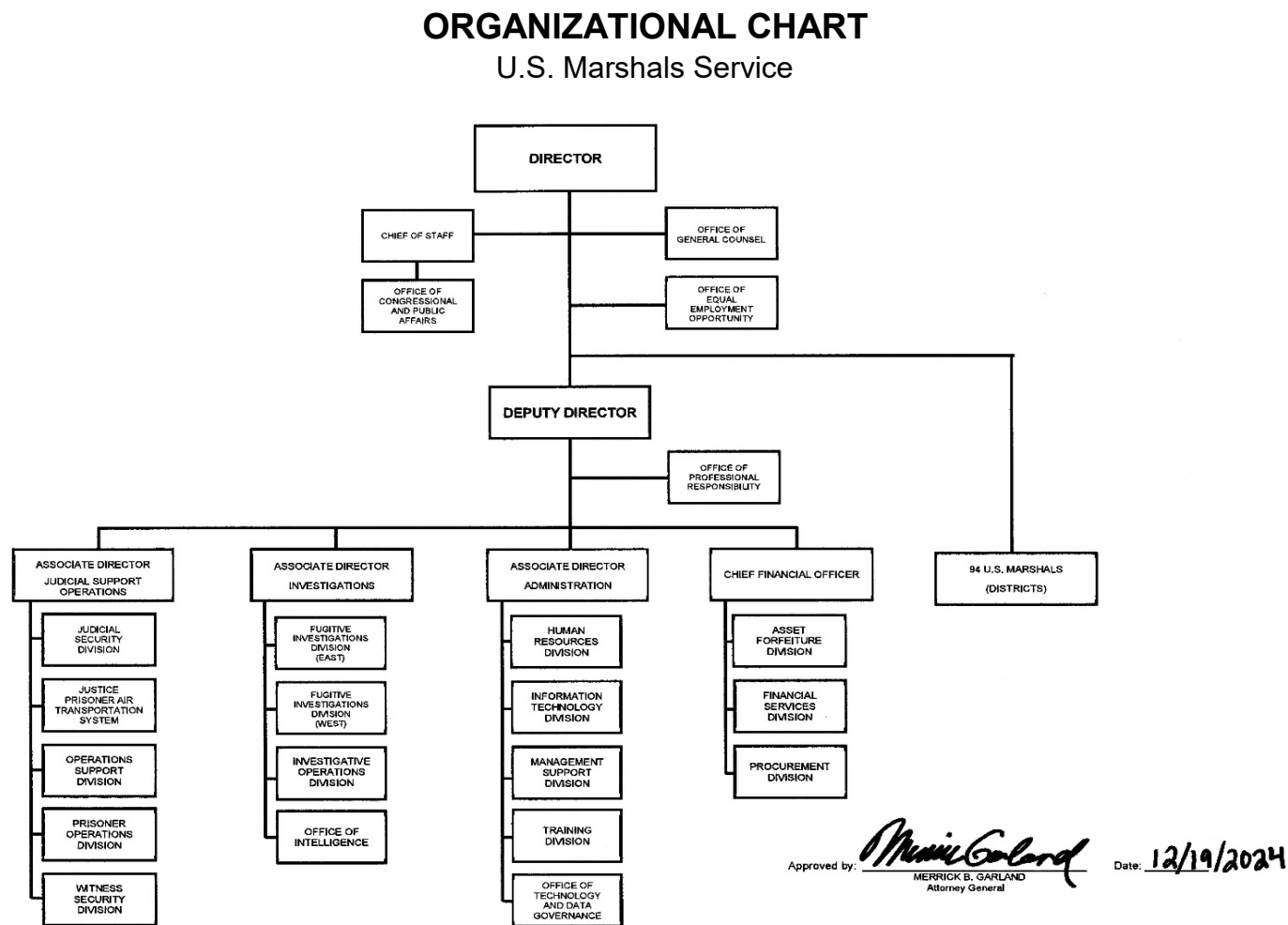


A. Organizational Chart



Approved by:  Date: 12/19/2024  
MERRICK B. GARLAND  
Attorney General

*This organizational chart is subject to change following implementation of the Department's ARR.*

B. Summary of Requirements

**Summary of Requirements**  
Justice Prisoner Air Transportation System  
Revolving Fund  
(Dollars in Thousands)

	FY 2026 Request		
	Pos.	FTE	Amount
<b>2024 Operating Level /1</b>	<b>123</b>	<b>95</b>	<b>81,000</b>
<b>2025 Operating Level</b>	<b>123</b>	<b>114</b>	<b>72,777</b>
2026 Changes to Operating Level	0	0	-1,313
<b>2026 Total Request</b>	<b>123</b>	<b>114</b>	<b>71,464</b>
2025 - 2026 Total Change	0	0	-1,313

1/ FY 2024 FTE is actual

B. Summary of Requirements

**Summary of Requirements**  
Justice Prisoner Air Transportation System  
Revolving Fund  
(Dollars in Thousands)

Program Activity	2024 Operating Level			2025 Operating Level			2026 Changes to Operating Level			2026 Operating Level		
	Direct Pos.	Actual FTE	Amount	Direct Pos.	Est. FTE	Amount	Direct Pos.	Est. FTE	Amount	Direct Pos.	Est. FTE	Amount
Justice Prisoner Air Transportation System	123	95	81,000	123	114	72,777	0	0	-1,313	123	114	71,464
Total	123	95	81,000	123	114	72,777	0	0	-1,313	123	114	71,464

F. Crosswalk of 2024 Availability

**Crosswalk of 2024 Availability**  
Justice Prisoner Air Transportation System  
Revolving Fund  
(Dollars in Thousands)

Program Activity	2024 Initial Availability			Reprogramming/ Transfers			Carryover	Recoveries/ Refunds	2024 Availability		
	Direct Pos.	Actual FTE	Amount	Direct Pos.	Est. FTE	Amount	Amount	Amount	Direct Pos.	Actual FTE	Amount
Justice Prisoner Air Transportation System	123	95	60,848	0	0	0	58,527	1,155	123	95	120,530
<b>Total</b>		<b>95</b>	<b>60,848</b>	<b>0</b>	<b>0</b>	<b>0</b>	<b>58,527</b>	<b>1,155</b>	<b>123</b>	<b>95</b>	<b>120,530</b>

**Availability:**

Based on SF-133, "Report on Budget Execution and Budgetary Resources," dated September 30, 2024.

**Carryover:**

Includes the mandatory CORPUS balance and carryover reimbursable obligation authority.

**Recoveries/Refunds:**

JPATS is a revolving fund -- prior year recoveries are reapportioned and used in current year operations.

## G. Crosswalk of 2025 Availability

**Crosswalk of 2025 Availability**  
Justice Prisoner Air Transportation System  
Revolving Fund  
(Dollars in Thousands)

Program Activity	2025 Initial Availability			Reprogramming/ Transfers			Carryover	Recoveries/ Refunds	2025 Actual		
	Direct Pos.	Est. FTE	Amount	Direct Pos.	Est. FTE	Amount	Amount	Amount	Direct Pos.	Est. FTE	Amount
Justice Prisoner Air Transportation System	123	114	85,274	0	0	0	39,530	2,500	123	114	127,304
<b>Total</b>	<b>123</b>	<b>114</b>	<b>85,274</b>	<b>0</b>	<b>0</b>	<b>0</b>	<b>39,530</b>	<b>2,500</b>	<b>123</b>	<b>114</b>	<b>127,304</b>

**Availability:**

Based on SF-133, "Report on Budget Execution and Budgetary Resources," dated November 30, 2024.

**Carryover:**

Includes the mandatory CORPUS balance and carryover reimbursable obligation authority.

**Recoveries/Refunds:**

JPATS is a revolving fund and prior year recoveries are reapportioned and used in current year operations.

H. Summary of Reimbursable Resources

**Summary of Reimbursable Resources**

Justice Prisoner Air Transportation System

Revolving Fund

(Dollars in Thousands)

Collections by Source	2024 Operating Level			2025 Operating Level			2026 Operating Level			Increase/Decrease		
	Pos.	FTE	Amount	Pos.	FTE	Amount	Pos.	FTE	Amount	Pos.	FTE	Amount
United States Marshals Service			36,854			51,929			50,827			-1,102
Bureau of Prisons			23,451			28,045			29,130			1,085
State, Local, Dept of Defense, and Misc.			543			0			0			0
<b>Total Collections by Source</b>	<b>123</b>	<b>95</b>	<b>60,848</b>	<b>123</b>	<b>114</b>	<b>79,974</b>	<b>123</b>	<b>114</b>	<b>79,957</b>	<b>0</b>	<b>0</b>	<b>-17</b>

Obligations by Program Activity	2024 Operating Level			2025 Operating Level			2026 Operating Level			Increase/Decrease		
	Pos.	FTE	Amount	Pos.	FTE	Amount	Pos.	FTE	Amount	Pos.	FTE	Amount
Justice Prisoner Air Transportation System	123	95	81,000	123	114	72,777	123	114	71,464	0	0	-1,313
<b>Budgetary Resources</b>	<b>123</b>	<b>95</b>	<b>81,000</b>	<b>123</b>	<b>114</b>	<b>72,777</b>	<b>123</b>	<b>114</b>	<b>71,464</b>	<b>0</b>	<b>0</b>	<b>-1,313</b>

Notes:

The amounts for collections are inclusive of expenses for depreciation which are collected from the customer.

The operating authority does not include amounts for depreciation as it does not require budgetary authority.

## I. Detail of Permanent Positions by Category

**Detail of Permanent Positions by Category**

Justice Prisoner Air Transportation System

Revolving Fund

(Dollars in Thousands)

Category	2024 Operating Level	2025 Operating Level	2026 Operating Level		
	Reimb. Pos.	Reimb. Pos.	ATBs	Changes to Operating Level	Total Reimb. Pos.
Intelligence Series (132)	2	2	0	0	2
Clerical and Office Services (300-399)	18	16	0	1	17
Accounting and Budget (500-599)	11	11	0	0	11
Paramedics/Nurses (610 & 640)	11	11	0	0	11
Attorneys (905)	1	1	0	0	1
Business & Industry (1100-1199)	4	4	0	0	4
Equipment, Facilities, and Services Group (1601)	1	1	0	0	1
Miscellaneous Inspectors Series (1801)	27	28	0	0	28
Criminal Investigative Series (1811)	4	4	0	-1	3
Quality Assurance, Inspection & Grading Group (1900-1999)	4	5	0	0	5
Transportation Group (2100-2199)	35	35	0	0	35
Information Technology Mgmt (2210)	5	5	0	0	5
<b>Total</b>	<b>123</b>	<b>123</b>	<b>0</b>	<b>0</b>	<b>123</b>
Headquarters Washington D.C.	1	1	0	0	1
U.S. Field	122	122	0	0	122
<b>Total</b>	<b>123</b>	<b>123</b>	<b>0</b>	<b>0</b>	<b>123</b>

## K. Summary of Requirements by Object Class

**Summary of Requirements by Object Class**

Justice Prisoner Air Transportation System

Revolving Fund

(Dollars in Thousands)

Object Class	2024 Operating Level		2025 Operating Level		2026 Operating Level		Increase/Decrease	
	FTE	Amount	FTE	Amount	FTE	Amount	FTE	Amount
11.1 Full-Time Permanent	95	10,079	114	12,700	114	11,684	0	-1,016
11.3 - Other than full-time permanent	0	180	0	0	0	0	0	0
11.5 Other Personnel Compensation	0	854	0	1,048	0	986	0	-62
<i>Overtime</i>	0	552	0	615	0	551	0	-64
<i>Other Compensation</i>	0	302	0	433	0	435	0	2
11.8 Special Personal Services Payments	0	4,421	0	0	0	0	0	0
<b>Total</b>	<b>95</b>	<b>15,534</b>	<b>114</b>	<b>13,748</b>	<b>114</b>	<b>12,670</b>	<b>0</b>	<b>-1,078</b>
<b>Other Object Classes</b>								
12.0 Personnel Benefits		4,724		5,369		4,799		-570
13.0 - Benefits for former personnel		33		0		0		0
21.0 Travel and Transportation of Persons		740		1,033		1,127		94
22.0 Transportation of Things		44		0		0		0
23.1 Rental Payments to GSA		721		902		1,738		836
23.2 Rental Payments to Others		133		94		194		100
23.3 Communications, Utilities, and Miscellaneous Charges		3,539		5,369		5,470		101
25.1 Advisory and Assistance Services		523		753		593		-160
25.2 Other Services from Non-Federal Sources		660		383		479		96
25.3 Other Goods and Services from Federal Sources		587		880		836		-44
25.4 Operation and Maintenance of Facilities		364		469		423		-46
25.6 Medical Care		323		174		211		37
25.7 Operation and Maintenance of Equipment		15,505		19,323		20,305		982
25.8 Subsistence and Support of Persons		0		7,432		6,348		-1,084
26.0 Supplies and Materials		10,954		15,753		15,608		-145
31.0 Equipment		25,725		915		596		-319
32.0 Land and Structures		891		180		67		-113
<b>Total Obligations</b>		<b>81,000</b>		<b>72,777</b>		<b>71,464</b>		<b>-1,313</b>
Subtract - Unobligated Balance, Start-of-Year		-58,527		-39,530		-48,727		-9,197
Subtract - Recoveries/Refunds		-1,155		-2,500		0		2,500
Add - Unobligated End-of-Year, Available		39,530		48,727		57,220		8,493
<b>Total Direct Requirements</b>	<b>0</b>	<b>60,848</b>	<b>0</b>	<b>79,474</b>	<b>0</b>	<b>79,957</b>	<b>0</b>	<b>483</b>
Reimbursable FTE								
Full-Time Permanent	95		114		114		0	

\* Non-SES/SL/ST Award (FY 2025 = 2.2% of Salary, FY 2026 = 2.2% of Salary)

12,481

275

11,497

253



**Schedule of Aircraft**  
Justice Prisoner Air Transportation System  
Revolving Fund

Type of Aircraft (Passenger Capacity)	End-of-Year Inventory	2024			2025			2026		
		Acquired	Disposed	End of Year	Acquired	Disposed	End of Year	Acquired	Disposed	End of Year
Direct Purchase:										
Jet Engine (120-140)	4	1	0	5	0	1	4	0	0	4
Turbo-Prop (50-60)										
Subtotal, Purchased	4	1	0	5	0	1	4	0	0	4
Leased:										
Jet Engine (120-140)										
Subtotal, Leased										
Seized or No Cost										
Subtotal, Seized										
Total Aircraft	4	1	0	5	0	1	4	0	0	4