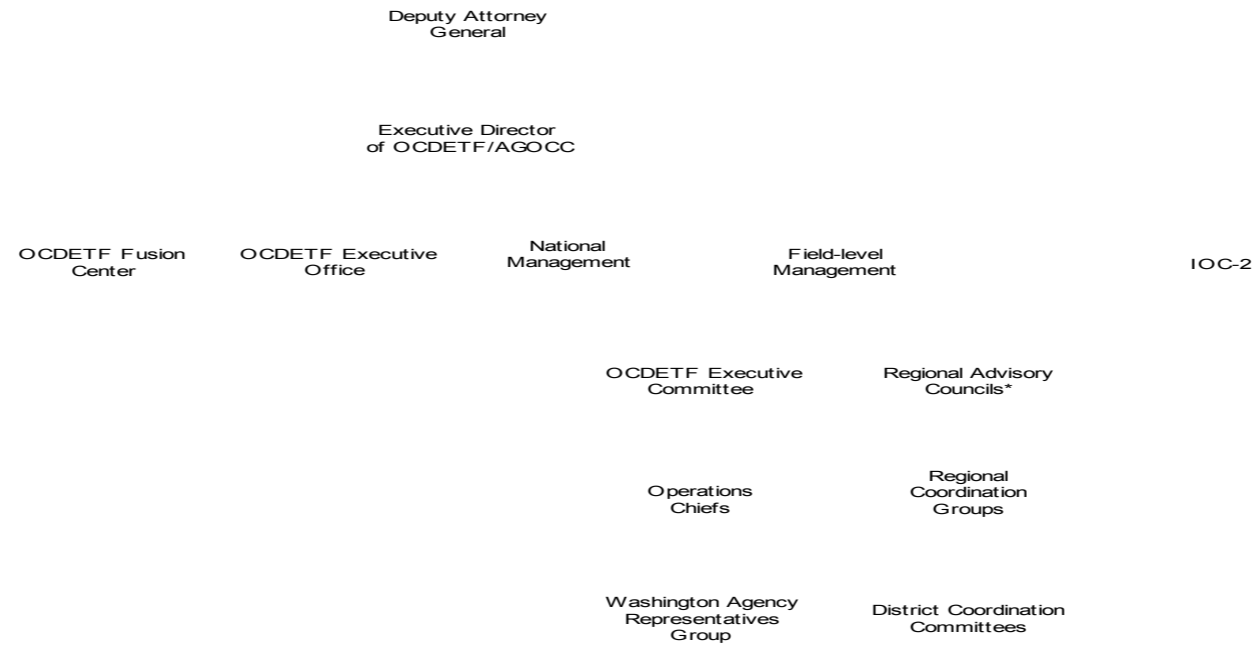


A: Organizational Chart

A: Organizational Chart

OCDETF Organizational Chart



- Each of the nine OCDETF Regions is structured the same way with a Regional Advisory Council, a Regional Coordination Group and a District Coordination Committee in each judicial district in the region. Thus, there are a total of 94 District Coordination Committees.
- Dashed lines (- -) indicate oversight responsibility rather than direct reporting authority. These entities are accountable to the OCDETF Director and DAG for program performance and use of program resources.

B. Summary of Requirements

Summary of Requirements
 Interagency Crime Drug Enforcement Task Force
 Salaries and Expenses
 (Dollars in Thousands)

	FY 2016 Request		
	Direct Positions	FTE	Amount
2014 Enacted ^{1/}	3,127	3,074	514,000
2014 Balance Rescission (if applicable)			0
Total 2014 Enacted (with Balance Rescission)	3,127	3,074	514,000
2015 Enacted	3,051	2,998	507,194
2015 Balance Rescission (if applicable)	0	0	0
Total 2015 Enacted (with Balance Rescission)	3,051	2,998	507,194
Base Adjustments			
Pay and Benefits	-85	-85	10,547
Domestic Rent and Facilities	0	0	1,924
Other Adjustments	0	0	0
Total Base Adjustments	-85	-85	12,471
Total Technical and Base Adjustments	-85	-85	12,471
2016 Current Services	2,966	2,913	519,665
Program Changes			
International Organized Crime Intelligence and Operations Center (IOC-2)	4	4	1,830
Subtotal, Increases	4	4	1,830
Decreases			
Program and/or Administrative Savings	0	0	-2,194
Subtotal, Decreases	0	0	-2,194
Total Program Changes	4	4	-364
2016 Total Request	2,970	2,917	519,301
2016 Balance Rescission [if applicable]			0
2016 Total Request (with Balance Rescission)	2,970	2,917	519,301
2015 - 2016 Total Change	-81	-81	12,107

FY 2014 FTE is actual ^{1/}

B. Summary of Requirements

Summary of Requirements
 Interagency Crime Drug Enforcement Task Force
 Salaries and Expenses
 (Dollars in Thousands)

Program Activity	2014 Enacted			2015 Enacted			2016 Technical and Base Adjustments			2016 Current Services		
	Direct Pos.	Est. FTE	Amount	Direct Pos.	Est. FTE	Amount	Direct Pos.	Est. FTE	Amount	Direct Pos.	Est. FTE	Amount
Investigations	2,077	2,076	364,114	2,001	2,000	355,027	-85	-85	9,234	1,916	1,915	364,261
Prosecutions	1,050	998	149,886	1,050	998	152,167	0	0	3,237	1,050	998	155,404
Total Direct	3,127	3,074	514,000	3,051	2,998	507,194	-85	-85	12,471	2,966	2,913	519,665
Balance Rescission			0			0			0			0
Total Direct with Rescission			514,000			507,194			12,471			519,665
Reimbursable FTE		0			0			0			0	
Total Direct and Reimb. FTE		3,074			2,998			-85			2,913	
Other FTE:												
LEAP		0			0			0			0	
Overtime		0			0			0			0	
Grand Total, FTE		3,074			2,998			-85			2,913	

Program Activity	2016 Increases			2016 Decreases			2016 Request		
	Direct Pos.	Est. FTE	Amount	Direct Pos.	Est. FTE	Amount	Direct Pos.	Est. FTE	Amount
Investigations	4	4	1,830	0	0	-1,524	1,920	1,919	364,567
Prosecutions	0	0	0	0	0	-670	1,050	998	154,734
Total Direct	4	4	1,830	0	0	-2,194	2,970	2,917	519,301
Balance Rescission			0			0			0
Total Direct with Rescission			1,830			-2,194			519,301
Reimbursable FTE		0			0			0	
Total Direct and Reimb. FTE		4			0			2,917	
Other FTE:									
LEAP		0			0			0	
Overtime		0			0			0	
Grand Total, FTE		4			0			2,917	

C. Program Changes by Decision Unit

FY 2016 Program Changes by Decision Unit

Interagency Crime Drug Enforcement Task Force
Salaries and Expenses
(Dollars in Thousands)

Program Increases	Location of Description in Narrative	Investigations				Prosecutions				Total Increases			
		Direct Pos.	Agt./ Atty.	Est. FTE	Amount	Direct Pos.	Agt./ Atty.	Est. FTE	Amount	Direct Pos.	Agt./ Atty.	Est. FTE	Amount
International Organized Crime Intelligence and Operations Center (IOC-2)		4	3	4	1,830	0	0	0	0	4	3	4	1,830
Total Program Increases		4	3	4	1,830	0	0	0	0	4	3	4	1,830

Program Offsets	Location of Description in Narrative	Investigations				Prosecutions				Total Decreases			
		Direct Pos.	Agt./ Atty.	Est. FTE	Amount	Direct Pos.	Agt./ Atty.	Est. FTE	Amount	Direct Pos.	Agt./ Atty.	Est. FTE	Amount
Program and/or Administrative Savings		0	0	0	-1,524	0	0	0	-670	0	0	0	-2,194
Total Program Offsets		0	0	0	-1,524	0	0	0	-670	0	0	0	-2,194

D. Resources by DOJ Strategic Goal and Strategic Objective

Resources by Department of Justice Strategic Goal/Objective
 Interagency Crime Drug Enforcement Task Force
 Salaries and Expenses
 (Dollars in Thousands)

Strategic Goal and Strategic Objective	2014 Enacted		2015 Enacted		2016 Current Services		2016 Increases		2016 Decreases		2016 Total Request	
	Direct/ Reimb FTE	Direct Amount	Direct/ Reimb FTE	Direct Amount	Direct/ Reimb FTE	Direct Amount	Direct/ Reimb FTE	Direct Amount	Direct/ Reimb FTE	Direct Amount	Direct/ Reimb FTE	Direct Amount
Goal 2 Prevent Crime, Protect the Rights of the American People, and enforce Federal Law												
2.1 Combat the threat, incidence, and prevalence of violent crime by leveraging strategic partnerships to investigate, arrest, and prosecute violent offenders and illegal firearms traffickers	329	54,891	321	54,168	312	55,502	0	0	0	-235	312	55,267
2.3 Disrupt and dismantle major drug trafficking organizations to combat the threat, trafficking, and use of illegal drugs and the diversion of licit drugs	2,745	458,109	2,677	452,066	2,601	463,203	0	0	0	-1,959	2,601	461,244
2.4 Investigate and prosecute corruption, economic crimes, and transnational organized crime	0	1,000	0	960	0	960	4	1,830	0	0	4	2,790
Subtotal, Goal 2	3,074	514,000	2,998	507,194	2,913	519,665	4	1,830	0	-2,194	2,917	519,301
TOTAL	3,074	514,000	2,998	507,194	2,913	519,665	4	1,830	0	-2,194	2,917	519,301

E. Justification for Technical and Base Adjustments

Justifications for Technical and Base Adjustments

Interagency Crime Drug Enforcement Task Force

Salaries and Expenses

(Dollars in Thousands)

	Direct Pos.	Estimate FTE	Amount
Pay and Benefits			
1 <u>2016 Pay Raise:</u> This request provides for a proposed 1.3 percent pay raise to be effective in January of 2016. The amount requested, \$4.254 million, represents the pay amounts for 3/4 of the fiscal year plus appropriate benefits (\$3.106 million for pay and \$1.148 million for benefits.)			4,254
2 <u>Annualization of 2015 Pay Raise:</u> This pay annualization represents first quarter amounts (October through December) of the 2015 pay increase of 1.0 percent included in the 2015 Appropriation. The amount requested \$927,000, represents the pay amounts for 1/4 of the fiscal year plus appropriate benefits (\$649,000 for pay and \$278,000 for benefits).			927
3 <u>Change in Compensable Days:</u> The increased cost for one more compensable day in FY 2016 (262) compared to FY 2015 (261) is calculated by dividing the FY 2015 estimated personnel compensation <u>\$327.796 million</u> and applicable benefits <u>\$113.676 million</u> by 261 compensable days			1,603
4 <u>Employee Compensation Fund:</u> The \$-1,000 request reflects anticipated changes in payments to the Department of Labor for injury benefits under the Federal Employee Compensation Act.			-1
5 <u>Health Insurance:</u> Effective January 2016, the component's contribution to Federal employees' health insurance increases by 2.5 percent. Applied against the 2015 estimate of \$19,753, the additional amount required is \$501K.			501
6 <u>Retirement: CSRS</u> Agency retirement contributions increase as employees under CSRS retire and are replaced by FERS employees. Based on U.S. Department of Justice Agency estimates, we project that the DOJ workforce will convert from CSRS to FERS at a rate of 1.3 percent per year, for both LEO and Non-LEO, based on the past 5 years of DOJ retirement data. The requested increase of \$296K is necessary to meet our increased retirement obligations as a result of this conversion.			296
7 <u>Position/FTE Adjustment</u> The loss in positions is a technical adjustment to reflect the shift of OCDETF funded positions in FY 2014 to DEA.	-85	-85	0
8 <u>FERS Regular/Law Enforcement Retirement Contribution:</u> Effective October 1, 2015 (FY 2016), the new agency contribution rates of 13.2% (up from the current 11.9%, or an increase of 1.3%) and 28.8% for law enforcement personnel (up from the current 26.3%, or an increase of 2.5%). The amount requested, \$2,967,000, represents the funds needed to cover this increase.			2,967
Subtotal, Pay and Benefits	-85	-85	10,547
Domestic Rent and Facilities			
1 <u>General Services Administration (GSA) Rent:</u> GSA will continue to charge rental rates that approximate those charged to commercial tenants for equivalent space and related services. The requested increase of \$1,923,000 is required to meet our commitment to GSA. The costs associated with GSA rent were derived through the use of an automated system, which uses the latest inventory data, including rate increases to be effective FY 2016 for each building currently occupied by Department of Justice components, as well as the costs of new space to be occupied.			1,923
2 <u>Guard Services:</u> This includes Department of Homeland Security (DHS) Federal Protective Service charges, Justice Protective Service charges and other security services across the country. The requested increase of \$1,000 is required to meet these commitments.			1
Subtotal, Other Adjustments	0	0	1,924
TOTAL DIRECT TECHNICAL and BASE ADJUSTMENTS	-85	-85	12,471

F. Crosswalk of 2014 Availability

Crosswalk of 2014 Availability
 Interagency Crime Drug Enforcement Task Force
 Salaries and Expenses
 (Dollars in Thousands)

Program Activity	2014 Enacted			Reprogramming/Transfers			Carryover	Recoveries/ Refunds	2014 Availability		
	Direct Pos.	Estim. FTE	Amount	Direct Pos.	Estim. FTE	Amount	Amount	Amount	Direct Pos.	Estim. FTE	Amount
Investigations	2,077	2,076	364,114	0	0	0	1,278	1,121	2,077	2,076	366,513
Prosecutions	1,050	998	149,886	0	0	0	548	481	1,050	998	150,915
Total Direct	3,127	3,074	514,000	0	0	0	1,826	1,602	3,127	3,074	517,428
Reimbursable FTE		0			0					0	
Total Direct and Reimb. FTE		3,074			0					3,074	
Other FTE:											
LEAP		0			0					0	
Overtime		0			0					0	
Grand Total, FTE		3,074			0					3,074	

Carryover:

Funds were carried forward from the FY 2013 ICDE no year account.

Recoveries/Refunds:

Represents allocated funds that participating agencies returned.

G. Crosswalk of 2015 Availability

Crosswalk of 2015 Availability

Name of Budget Account
Salaries and Expenses
(Dollars in Thousands)

Program Activity	FY 2015 Enacted			Reprogramming/Transfers			Carryover	Recoveries/ Refunds	2015 Availability		
	Direct Pos.	Estim. FTE	Amount	Direct Pos.	Estim. FTE	Amount	Amount	Amount	Direct Pos.	Estim. FTE	Amount
Investigations	2,001	2,000	355,027	0	0	0	2,955	2,212	2,001	2,000	360,194
Prosecutions	1,050	998	152,167	0	0	0	1,266	948	1,050	998	154,381
Total Direct	3,051	2,998	507,194	0	0	0	4,221	3,160	3,051	2,998	514,575
Reimbursable FTE		0			0					0	
Total Direct and Reimb. FTE		2,998			0					2,998	
Other FTE:											
LEAP		0			0					0	
Overtime		0			0					0	
Grand Total, FTE		2,998			0					2,998	

Carryover:

Funds were carried forward from the FY 2014 ICDE no year account.

Recoveries/Refunds:

Represents allocated funds that participating agencies returned.

H. Summary of Reimbursable Resources

Summary of Reimbursable Resources
 Interagency Crime Drug Enforcement Task Force
 Salaries and Expenses
 (Dollars in Thousands)

Collections by Source	2014 Actual			2015 Planned			2016 Request			Increase/Decrease		
	Reimb. Pos.	Reimb. FTE	Amount	Reimb. Pos.	Reimb. FTE	Amount	Reimb. Pos.	Reimb. FTE	Amount	Reimb. Pos.	Reimb. FTE	Amount
Assets Forfeiture Fund	0	0	47,436	0	0	45,706	0	0	45,706	0	0	0
TEOAF	0	0	1,000	0	0	1,000	0	0	1,000	0	0	0
Budgetary Resources	0	0	48,436	0	0	46,706	0	0	46,706	0	0	0

I. Detail of Permanent Positions by Category

Detail of Permanent Positions by Category

Interagency Crime Drug Enforcement Task Force
Salaries and Expenses
(Dollars in Thousands)

Category	2014 Enacted		2015 Enacted		2016 Request				
	Direct Pos.	Reimb. Pos.	Direct Pos.	Reimb. Pos.	ATBs	Program Increases	Program Decreases	Total Direct Pos.	Total Reimb. Pos.
Intelligence Series (132)	148	0	148	0	0	0	0	148	0
Personnel Management (200-299)	1	0	1	0	0	0	0	1	0
Clerical and Office Services (300-399)	575	0	552	0	-23	1	0	530	0
Accounting and Budget (500-599)	25	0	25	0	0	0	0	25	0
Attorneys (905)	573	0	573	0	0	2	0	575	0
Paralegals / Other Law (900-998)	77	0	77	0	0	0	0	77	0
Information & Arts (1000-1099)	11	0	11	0	0	0	0	11	0
Business & Industry (1100-1199)	6	0	6	0	0	0	0	6	0
Miscellaneous Inspectors Series (1802)	88	0	88	0	0	0	0	88	0
Criminal Investigative Series (1811)	1,502	0	1,449	0	-62	1	0	1,388	0
Information Technology Mgmt (2210)	13	0	13	0	0	0	0	13	0
Motor Vehicle Operations (5703)	108	0	108	0	0	0	0	108	0
Total	3,127	0	3,051	0	-85	4	0	2,970	0
Headquarters (Washington, D.C.)	61	0	61	0	0	4	0	65	0
U.S. Field	3,066	0	2,990	0	0	0	-85	2,905	0
Total	3,127	0	3,051	0	0	4	-85	2,970	0

J. Financial Analysis of Program Changes

Financial Analysis of Program Changes

Interagency Crime & Drug Enforcement

Salaries and Expenses

(Dollars in Thousands)

Grades	Investigations				Prosecutions				Total Program Changes	
	Program Increases		Program Decreases		Program Increases		Program Decreases		Direct	Amount
	Direct	Amount	Direct	Amount	Direct	Amount	Direct	Amount		
GS-15	3	330	0	0	0	0	0	0	3	330
GS-13	1	70	0	0	0	0	0	0	1	70
Total Positions and Annual Amount	4	400	0	0	0	0	0	0	4	400
11.5 - Other personnel compensation		0		0		0		0		0
Total FTEs and Personnel Compensation	4	400	0	0	0	0	0	0	4	400
25.3 - Other goods and services from federal sources		1,430		-1,524		0		-670		-764
Total Program Change Requests	4	1,830	0	-1,524	0	0	0	-670	4	-364

K. Summary of Requirements by Object Class

Summary of Requirements by Object Class

Interagency Crime Drug Enforcement Task Force

Salaries and Expenses

(Dollars in Thousands)

Object Class	2014 Actual		2015 Availability		2016 Request		Increase/Decrease	
	Direct FTE	Amount	Direct FTE	Amount	Direct FTE	Amount	Direct FTE	Amount
11.1 Full-Time Permanent	3,074	292,711	2,998	288,685	2,917	295,457	-81	6,772
11.3 Other than Full-Time Permanent	0	944	0	1,083	0	1,083	0	0
11.5 Other Personnel Compensation	0	37,506	0	38,027	0	38,051	0	24
11.8 Special Personal Services Payments	0	4	0	0	0	0	0	0
Total	3,074	331,165	2,998	327,796	2,917	334,591	-81	6,795
Other Object Classes								
12.0 Personnel Benefits		120,088		113,676		117,827		4,151
13.0 Benefits for former personnel		0		52		52		0
21.0 Travel and Transportation of Persons		5,589		7,005		7,005		0
22.0 Transportation of Things		79		101		101		0
23.1 Rental Payments to GSA		3,526		809		2,733		1,924
23.2 Rental Payments to Others		164		70		70		0
23.3 Communications, Utilities, and Miscellaneous Charges		9,339		4,606		4,606		0
24.0 Printing and Reproduction		68		21		21		0
25.1 Advisory and Assistance Services		7,491		7,872		7,872		0
25.2 Other Services from Non-Federal Sources		28,751		45,793		38,412		-7,381
25.3 Other Goods and Services from Federal Sources		0		2,207		1,443		-764
25.4 Operation and Maintenance of Facilities		834		132		132		0
25.5 Research and Development Contracts		2		185		185		0
25.6 Medical Care		2		0		0		0
25.7 Operation and Maintenance of Equipment		867		442		442		0
25.8 Subsistence and Support of Persons		132		141		141		0
26.0 Supplies and Materials		1,856		2,149		2,149		0
31.0 Equipment		3,085		1,514		1,514		0
32.0 Land and Structures		145		4		4		0
42.0 Insurance Claims and Indemnities		1		1		1		0
Total Obligations		513,184		514,575		519,301		4,726
Subtract - Unobligated Balance, Start-of-Year		-1,826		-4,221		0		4,221
Subtract - Transfers/Reprogramming		0		0		0		0
Subtract - Recoveries/Refunds		-1,602		-3,160		0		3,160
Add - Unobligated End-of-Year, Available		4,221		0		0		0
Add - Unobligated End-of-Year, Expiring		23		0		0		0
Total Direct Requirements	0	514,000	0	507,194	0	519,301	0	12,107

L. Status of Congressionally Requested Studies, Reports, and Evaluations

Interagency Crime Drug Enforcement Task Force

Salaries and Expenses

(Dollars in Thousands)

Status of Congressionally Requested Studies, Reports, and Evaluations

1. The House Report associated with the FY 2015 Consolidated and Further Appropriations Act, page 46, directs OCDETF to submit an updated report no later than 120 days after the enactment of this Act displaying current and historical levels of investigative and prosecutorial FTE devoted to OCDETF cases, including FTE funded under this account and FTE funded from other appropriations. Target response to Committee April 2015.
2. The Senate Report associated with the FY 2015 Consolidated and Further Appropriations Act, page 84, directs OCDETF to provide non-sensitive law enforcement information regarding how, under the OCDETF program, law enforcement agencies prioritize and coordinate information and activities across the country to combat drug trafficking, especially in areas of the United States that have a disproportionately high level of drug trafficking. Target responses to Committee June 2015.