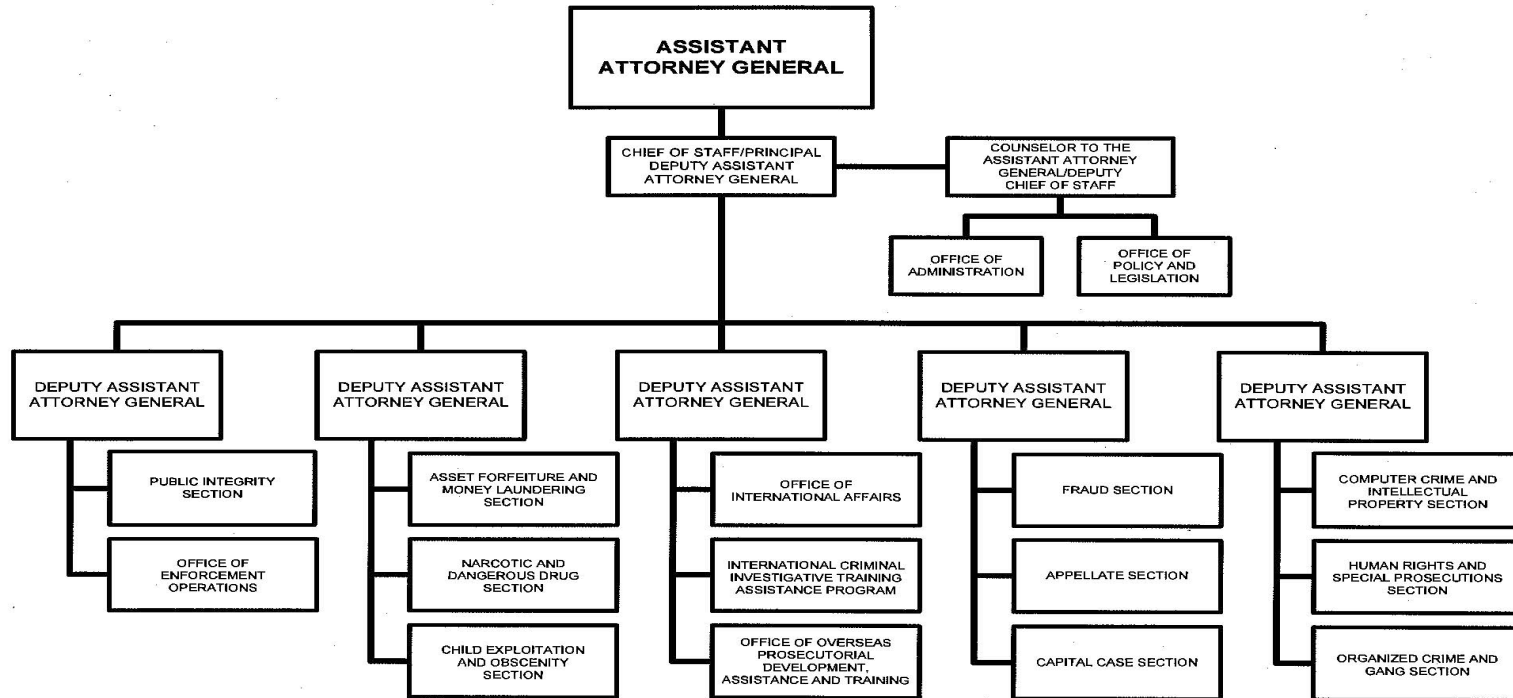


A: Organizational Chart

CRIMINAL DIVISION



Approved by:

ERIC H. HOLDER, JR.
Attorney General

Date: Aug. 28, 2013

Summary of Requirements

Criminal Division
Salaries and Expenses
(Dollars in Thousands)

	FY 2016 Request		
	Direct Pos.	Estimate FTE	Amount
2014 Enacted ^{/1}	750	620	174,189
Total 2014 Enacted	750	620	174,189
2015 Enacted	750	674	178,042
Base Adjustments			
Pay and Benefits	0	0	2,810
Domestic Rent and Facilities	0	0	3,815
Other Adjustments	0	0	4
Foreign Expenses	0	0	4,932
Total Base Adjustments	0	0	11,561
Total Technical and Base Adjustments	0	0	11,561
2016 Current Services	750	674	189,603
Program Changes			
Increases:			
Mutual Legal Assistance Treaty (MLAT) Reform	141	141	32,111
International Law Enforcement and Justice Development	107	83	12,434
Strategic Initiatives to Address Cyber Threats	54	29	6,123
Intellectual Property Enforcement	11	6	2,205
Subtotal, Increases	313	259	52,873
Total Program Changes	313	259	52,873
2016 Total Request	1,063	933	242,476
2015 - 2016 Total Change	313	259	64,434

FY 2014 FTE is actual ^{/1}

Summary of Requirements

Criminal Division
Salaries and Expenses
(Dollars in Thousands)

Program Activity	FY 2014 Appropriation Enacted			FY 2015 Enacted			FY 2016 Technical and Base Adjustments			FY 2016 Current Services		
	Direct Pos.	Actual FTE	Amount	Direct Pos.	Est. FTE	Amount	Direct Pos.	Est. FTE	Amount	Direct Pos.	Est. FTE	Amount
Enforcing Federal Criminal Laws	750	620	174,189	750	674	178,042	0	0	11,561	750	674	189,603
Total Direct	750	620	174,189	750	674	178,042	0	0	11,561	750	674	189,603
Balance Rescission			0			0			0			0
Total Direct with Rescission			174,189			178,042			11,561			189,603
Reimbursable FTE		276			297			0			297	
Total Direct and Reimb. FTE		896			971			0			971	
Other FTE:												
LEAP		0			0			0			0	
Overtime		0			0			0			0	
Grand Total, FTE		896			971			0			971	

Program Activity	2016 Increases			2016 Offsets			2016 Request		
	Direct Pos.	Est. FTE	Amount	Direct Pos.	Est. FTE	Amount	Direct Pos.	Est. FTE	Amount
Enforcing Federal Criminal Laws	313	259	52,873	0	0	0	1,063	933	242,476
Total Direct	313	259	52,873	0	0	0	1,063	933	242,476
Balance Rescission			0			0			0
Total Direct with Rescission			52,873			0			242,476
Reimbursable FTE		0			-36			261	
Total Direct and Reimb. FTE		259			-36			1,194	
Other FTE:									
LEAP		0			0			0	
Overtime		0			0			0	
Grand Total, FTE		259			-36			1,194	

FY 2016 Program Increases/Offsets by Decision Unit

Criminal Division
Salaries and Expenses
(Dollars in Thousands)

Program Increases	Location of Description by Program Activity	Enforcing Federal Criminal Laws				Total Increases			
		Direct Pos.	Agt./Atty.	Est. FTE	Amount	Direct Pos.	Agt./Atty.	Est. FTE	Amount
Mutual Legal Assistance Treaty (MLAT) Reform	20	141	77	141	32,111	141	77	141	32,111
International Law Enforcement and Justice Development	30	107	13	83	12,434	107	13	83	12,434
Strategic Initiatives to Address Cyber Threats	40	54	24	29	6,123	54	24	29	6,123
Intellectual Property Enforcement	48	11	7	6	2,205	11	7	6	2,205
Total Program Increases		313	121	259	52,873	313	121	259	52,873

Resources by Department of Justice Strategic Goal and Objective

Criminal Division
Salaries and Expenses
(Dollars in Thousands)

Strategic Goal and Strategic Objective	FY 2014 Appropriation Enacted		FY 2015 Enacted		FY 2016 Current Services		FY 2016 Increases		FY 2016 Offsets		FY 2016 Total Request	
	Direct & Reimb FTE	Direct Amount	Direct & Reimb FTE	Direct Amount	Direct & Reimb FTE	Direct Amount	Direct & Reimb FTE	Direct Amount	Direct & Reimb FTE	Direct Amount	Direct & Reimb FTE	Direct Amount
	Goal 1 Prevent Terrorism and Promote the Nation's Security Consistent with the Rule of Law											
1.1 Prevent, disrupt, and defeat terrorist operations before they occur by integrating intelligence and law enforcement efforts to achieve a coordinated response to terrorist threats.	53	5,967	53	5,964	53	6,351	15	2,373	-6	0	62	8,724
1.2 Prosecute those involved in terrorist acts	20	6,445	20	4,877	20	5,194	11	2,570	0	0	31	7,764
1.4 Combat cyber-based threats and attacks through the use of all available tools, strong public-private partnerships, and the investigation and prosecution of cyber threat actors.	69	19,750	69	16,495	69	17,566	33	7,227	-1	0	101	24,793
Subtotal, Goal 1	142	32,162	142	27,336	142	29,111	59	12,170	-7	0	194	41,281
Goal 2 Prevent crime, protect the rights of the American people, and enforce federal law												
2.1 Combat the threat, incidence, and prevalence of violent crime by leveraging strategic partnerships to investigate, arrest, and prosecute violent offenders and illegal firearms traffickers.	117	28,720	116	26,163	116	27,862	26	5,406	-3	0	139	33,268
2.2 Prevent and intervene in crimes against vulnerable populations and uphold the rights of, and improve services to America's crime victims.	65	18,168	65	16,985	65	18,088	12	2,536	-1	0	76	20,624
2.3 Disrupt and dismantle major drug trafficking organizations to combat the threat, trafficking, and use of illegal drugs and the diversion of licit drugs.	192	36,802	193	31,307	193	33,340	54	10,656	-7	0	240	43,996
2.4 Investigate and prosecute corruption, economic crimes, and transnational organized crime.	352	71,714	352	61,729	352	65,736	73	15,669	-7	0	418	81,405
2.5 Promote and protect American civil rights by preventing and prosecuting discriminatory practices.	3	578	3	578	3	615	1	140	0	0	4	755
Subtotal, Goal 2	729	155,982	729	136,762	729	145,641	166	34,407	-18	0	877	180,048
Goal 3 Ensure and support the fair, impartial, efficient, and transparent administration of justice at the federal, state, local, tribal, and international levels												
3.1 Promote and strengthen relationships and strategies for the administration of justice with law enforcement agencies, organizations, prosecutors, and defenders, through innovative leadership and programs.	73	7,697	73	7,497	73	7,985	31	5,689	-10	0	94	13,674
3.6 Prevent and respond to genocide and mass atrocities and ensure that perpetrators of such crimes are held accountable in the United States, and if appropriate, their home countries.	27	6,646	27	6,447	27	6,866	3	607	-1	0	29	7,473
Subtotal, Goal 3	100	14,343	100	13,944	100	14,851	34	6,296	-11	0	123	21,147
TOTAL	971	202,487	971	178,042	971	189,603	259	52,873	-36	0	1,194	242,476

Justifications for Technical and Base Adjustments

Criminal Division
Salaries and Expenses
(Dollars in Thousands)

	Direct Pos.	Estimate FTE	Amount
Pay and Benefits			
1 <u>2016 Pay Raise - 1.3%</u> This request provides for a proposed 1.3 percent pay raise to be effective in January of 2016. The amount request, \$1,245,000, represents the pay amounts for 3/4 of the fiscal year plus appropriate benefits (\$1,003,000 for pay and \$242,000 for benefits.)	0	0	1,245
2 <u>Annualization of 2015 Pay Raise</u> This pay annualization represents first quarter amounts (October through December) of the 2015 pay increase of 1.0 percent included in the 2015 President's Budget. The amount requested \$247,000, represents the pay amounts for 1/4 of the fiscal year plus appropriate benefits (\$ 188,000 for pay and \$59,000 for benefits).	0	0	247
3 <u>Changes in Compensable Days</u> The increased cost for one compensable day in FY 2016 compared to FY 2015 is calculated by dividing the FY 2015 estimated personnel compensation \$103,650,000 and applicable benefits \$18,441,000 by 262 compensable days.	0	0	463
4 <u>Employees Compensation Fund</u> The \$60,000 request reflects anticipated changes in payments to the Department of Labor for injury benefits under the Federal Employee Compensation Act.	0	0	60
5 <u>FERS Rate Increase</u> Effective October 1, 2015 (FY 2016), the new agency contribution rates of 13.7% (up from the current 13.2%, or an increase of 0.5%) and 30.1% for law enforcement personnel (up from the current 28.8%, or an increase of 1.3%). The amount requested, \$486,000, represents the funds needed to cover this increase.	0	0	486
6 <u>Health Insurance</u> Effective January 2016, the component's contribution to Federal employees' health insurance increases by 3.5 percent. Applied against the 2015 estimate of \$5,457,000, the additional amount required is \$239,000.	0	0	239
7 <u>Retirement</u> Agency retirement contributions increase as employees under CSRS retire and are replaced by FERS employees. Based on U.S. Department of Justice Agency estimates, we project that the DOJ workforce will convert from CSRS to FERS at a rate of 0.8 percent per year, for both LEO and Non-LEO, based on the past 5 years of DOJ retirement data. The requested increase of \$70,000 is necessary to meet our increased retirement obligations as a result of this conversion.	0	0	70
Subtotal, Pay and Benefits	0	0	2,810

Justifications for Technical and Base Adjustments

Criminal Division
Salaries and Expenses
(Dollars in Thousands)

	Direct Pos.	Estimate FTE	Amount
Domestic Rent and Facilities			
1 <u>GSA Rent</u> GSA will continue to charge rental rates that approximate those charged to commercial tenants for equivalent space and related services. The requested increase of \$3,637,000 is required to meet our commitment to GSA. The costs associated with GSA rent were derived through the use of an automated system, which uses the latest inventory data, including rate increases to be effective FY 2016 for each building currently occupied by Department of Justice components, as well as the costs of new space to be occupied.	0	0	3,637
2 <u>Guard Service</u> This includes Department of Homeland Security (DHS) Federal Protective Service charges, Justice Protective Service charges and other security services across the country. The requested increase of \$178,000 is required to meet these commitments.	0	0	178
Subtotal, Domestic Rent and Facilities	0	0	3,815
Other Adjustments			
1 <u>Security Investigations</u> The \$4,000 increase reflects payments to the Office of Personnel Management for security reinvestigations for employees requiring security clearances.	0	0	4
Subtotal, Other Adjustments	0	0	4
Foreign Expenses			
1 <u>Capital Security Cost Sharing</u> Per P.L. 108-447 and subsequent acts, "all agencies with personnel overseas subject to chief of mission authority...shall participate and provide funding in advance for their share of costs of providing new, safe, secure U.S. diplomatic facilities, without offsets, on the basis of the total overseas presence of each agency as determined by the Secretary of State." Originally authorized for FY 2000-2004, the program has been extended annually by OMB and Congress and has also been expanded beyond new embassy construction to include maintenance and renovation costs of the new facilities. For the purpose of this program, State's personnel totals for DOJ include current and projected staffing. The estimated cost to the Department, as provided by State, for FY 2016 is \$146,558,944. CRM currently has 212 positions overseas, and funding of \$4,664,000 is requested for this account.	0	0	4,664
2 <u>Foreign Affairs Counter-Threat (FACT) Training</u> The State Department is now requiring Foreign Affairs Counter-Threat (FACT) Training for all U.S. Government personnel deployed overseas. FACT training was designed to prepare members of the foreign affairs community to operate safely in non-permissive environments.	0	0	60
3 <u>ICASS</u> The Department of State charges agencies for administrative support provided to staff based overseas. Charges are determined by a cost distribution system. The FY 2016 request is based on the projected FY 2015 bill for post invoices and other ICASS costs.	0	0	208
Subtotal, Foreign Expenses	0	0	4,932
TOTAL DIRECT TECHNICAL and BASE ADJUSTMENTS	0	0	11,561

Crosswalk of 2014 Availability

Criminal Division
Salaries and Expenses
(Dollars in Thousands)

Program Activity	FY 2014 Appropriation Enacted			Reprogramming/Transfers			Carryover	Recoveries/Refunds	FY 2014 Availability		
	Direct Pos.	Est. FTE	Amount	Direct Pos.	Est. FTE	Amount	Amount	Amount	Direct Pos.	Est. FTE	Amount
Enforcing Federal Criminal Laws	750	620	174,189	0	0	2,330	1,351	11	750	620	177,881
Total Direct	750	620	174,189	0	0	2,330	1,351	11	750	620	177,881
Balance Rescission			0			0	0	0			0
Total Direct with Rescission			174,189			2,330	1,351	11			177,881
Reimbursable FTE		276			0					276	
Total Direct and Reimb. FTE		896			0					896	
Other FTE:											
LEAP FTE		0			0					0	
Overtime		0			0					0	
Grand Total, FTE		896			0					896	

Reprogramming/Transfers:

\$2,330,000 was reprogrammed from ALS to the Division.

Carryover:

Funding includes \$1,351,000 for ALS.

Recoveries/Refunds:

Crosswalk of 2015 Availability

Criminal Division
Salaries and Expenses
(Dollars in Thousands)

Program Activity	FY 2015 Enacted			Reprogramming/Transfers			Carryover	Rescission	FY 2015 Availability		
	Direct Pos.	Est. FTE	Amount	Direct Pos.	Est. FTE	Amount	Amount	Amount	Direct Pos.	Est. FTE	Amount
Enforcing Federal Criminal Laws	750	674	178,042	0	0	0	3,255	-1,181	750	674	180,116
Total Direct	750	674	178,042	0	0	0	3,255	-1,181	750	674	180,116
Balance Rescission			0			0	0	0			0
Total Direct with Rescission			178,042			0	3,255	-1,181			180,116
Reimbursable FTE		297			0					297	
Total Direct and Reimb. FTE		971			0					971	
Other FTE:											
LEAP FTE		0			0					0	
Overtime		0			0					0	
Grand Total, FTE		971			0					971	

Reprogramming/Transfers:

Carryover:

3,255,000 for ALS was carried over to FY 2015.

Recoveries/Refunds:

Summary of Reimbursable Resources

Criminal Division
Salaries and Expenses
(Dollars in Thousands)

Collections by Source	2014 Actual			2015 Estimate			2016 Request			Increase/Decrease		
	Reimb. Pos.	Reimb. FTE	Amount	Reimb. Pos.	Reimb. FTE	Amount	Reimb. Pos.	Reimb. FTE	Amount	Reimb. Pos.	Reimb. FTE	Amount
All Other Sources	70	48	54,738	70	48	45,000	85	65	45,000	15	17	0
Asset Forfeiture Fund	103	86	38,409	103	86	48,000	107	92	48,000	4	6	0
Department of State	184	150	300,000	184	150	135,000	125	91	168,750	-59	-59	33,750
Interagency Crime and Drug Enforcement	13	13	2,064	13	13	2,200	13	13	2,200	0	0	0
Budgetary Resources	370	297	395,211	370	297	230,200	330	261	263,950	-40	-36	33,750

Obligations by Program Activity	2014 Actual			2015 Estimate			2016 Request			Increase/Decrease		
	Reimb. Pos.	Reimb. FTE	Amount	Reimb. Pos.	Reimb. FTE	Amount	Reimb. Pos.	Reimb. FTE	Amount	Reimb. Pos.	Reimb. FTE	Amount
Enforcing Federal Criminal Laws	370	297	395,211	370	297	230,200	330	261	263,950	-40	-36	33,750
Budgetary Resources	370	297	395,211	370	297	230,200	330	261	263,950	-40	-36	33,750

Detail of Permanent Positions by Category

Criminal Division
Salaries and Expenses
(Dollars in Thousands)

Category	FY 2014 Appropriation Enacted with Balance Rescissions		FY 2015 Enacted		FY 2016 Request				
	Direct Pos.	Reimb. Pos.	Direct Pos.	Reimb. Pos.	ATBs	Program Increases	Program Offsets	Total Direct Pos.	Total Reimb. Pos.
Miscellaneous Operations (001-099)	1	0	1	0	0	0	0	1	0
Security Specialists (080)	11	0	11	0	0	0	0	11	0
Intelligence Series (132)	1	0	1	0	0	0	0	1	0
Personnel Management (0200-0260)	19	0	19	0	0	0	0	19	0
Clerical and Office Services (0300-0399)	146	78	146	78	0	83	0	229	50
Accounting and Budget (500-599)	10	36	10	36	0	17	0	27	20
Paralegals / Other Law (900-998)	90	25	90	25	0	0	0	90	25
Attorneys (905)	439	225	439	225	0	121	0	560	233
Information & Arts (1000-1099)	1	1	1	1	0	3	0	4	1
Paralegal Specialist (0950)	0	0	0	0	0	74	0	74	0
Business & Industry (1100-1199)	2	1	2	1	0	0	0	2	0
Physical Sciences (1300-1399)	0	0	0	1	0	1	0	1	0
Forensic Scientists	0	1	0	0	0	0	0	0	0
Library (1400-1499)	4	0	4	0	0	0	0	4	0
Equipment/Facilities Services (1600-1699)	2	0	2	0	0	0	0	2	0
Education (1700-1799)	0	1	0	1	0	1	0	1	0
Inspection, Investigation, Enforcement Analyst(1801)	6	0	6	0	0	0	0	6	0
Transportation (2100-2199)	0	1	0	1	0	1	0	1	0
Information Technology Mgmt (2210-2299)	18	1	18	1	0	12	0	30	1
Total	750	370	750	370	0	313	0	1,063	330
Headquarters Washington D.C.	736	237	736	237	0	304	0	1,040	197
US Fields	0	0	0	0	0	0	0	0	0
Foreign Field	14	133	14	133	0	9	0	23	133
Total	750	370	750	370	0	313	0	1,063	330

Financial Analysis of Program Changes

Criminal Division
Salaries and Expenses
(Dollars in Thousands)

Grades	Enforcing Federal Criminal Laws				Total Program Changes	
	Program Increases		Program Decreases		Direct Pos.	Amount
	Direct Pos.	Amount	Direct Pos.	Amount		
SES/SL	1	327	0	0	1	327
GS-15	13	2,563	0	0	13	2,563
GS-14	117	29,172	0	0	117	29,172
GS-13	24	3,218	0	0	24	3,218
GS-11	34	2,914	0	0	34	2,914
GS-9	114	11,230	0	0	114	11,230
GS-7	10	667	0	0	10	667
Total Positions and Annual Amount	313	50,091	0	0	313	50,091
Lapse (-)	-54	-15,184	0	0	-54	-15,184
11.5 - Other personnel compensation		0		0		0
Total FTEs and Personnel Compensation	259	34,907	0	0	259	34,907
21.0 - Travel and transportation of persons		2,040		0		2,040
22.0 - Transportation of things		764		0		764
23.3 - Communications, utilities, and miscellaneous charges		1,897		0		1,897
24.0 - Printing and reproduction		29		0		29
25.2 - Other services from non-federal sources		3,885		0		3,885
25.3 - Other goods and services from federal sources		3,682		0		3,682
25.6 - Medical care		35		0		35
26.0 - Supplies and materials		378		0		378
31.0 - Equipment		5,256		0		5,256
Total Program Change Requests	259	52,873	0	0	259	52,873

Summary of Requirements by Object Class

Criminal Division
Salaries and Expenses
(Dollars in Thousands)

Object Class	FY 2014 Actual		FY 2015 Enacted		FY 2016 Request		Increase/Decrease	
	Act. FTE	Amount	Direct FTE	Amount	Direct FTE	Amount	Direct FTE	Amount
11.1 - Full-time permanent	547	70,242	595	73,300	854	92,164	259	18,864
11.3 - Other than full-time permanent	73	6,768	79	7,200	79	13,100	0	5,900
11.5 - Other personnel compensation	0	1,211	0	1,400	0	1,800	0	400
<i>Overtime</i>	0	0	0	0	0	0	0	0
<i>Other Compensation</i>	0	0	0	0	0	0	0	0
11.8 - Special personal services payments	0	2,535	0	3,500	0	3,500	0	0
Total	620	80,756	674	85,400	933	110,564	259	25,164
Other Object Classes								
12.1 - Civilian personnel benefits		22,287		23,500		33,700	0	10,200
13.0 - Benefits for former personnel		20		20		20	0	0
21.0 - Travel and transportation of persons		3,730		5,200		6,800	0	1,600
22.0 - Transportation of things		846		1,200		1,800	0	600
23.1 - Rental payments to GSA		21,436		25,000		31,000	0	6,000
23.2 - Rental payments to others		1,491		1,500		3,000	0	1,500
23.3 - Communications, utilities, and miscellaneous charges		3,065		3,300		4,400	0	1,100
24.0 - Printing and reproduction		54		200		250	0	50
25.1 - Advisory and assistance services		5,190		5,400		7,700	0	2,300
25.2 - Other services from non-federal sources		15,636		17,916		29,242	0	11,326
25.3 - Other goods and services from federal sources		6,026		7,900		8,500	0	600
25.6 - Medical care		95		100		200	0	100
25.7 - Operation and maintenance of equipment		133		200		300	0	100
26.0 - Supplies and materials		808		880		2,000	0	1,120
31.0 - Equipment		12,415		2,400		3,000	0	600
Total Obligations		173,988		180,116		242,476	0	62,360
Subtract - Unobligated Balance, Start-of-Year		-1,351		-3,255		0	0	3,255
Subtract - Transfers/Reprogramming		-2,330		0		0	0	0
Subtract - Recoveries/Refunds		-11		0		0	0	0
Add - Unobligated End-of-Year, Available		3,255		0		0	0	0
Add - Rescission		0		1,181		0	0	-1,181
Add - Unobligated End-of-Year, Expiring		638		0		0	0	0
Total Direct Requirements	0	174,189	0	178,042	0	242,476	0	64,434
Reimbursable FTE								
Full-Time Permanent	276		297		261		-36	0