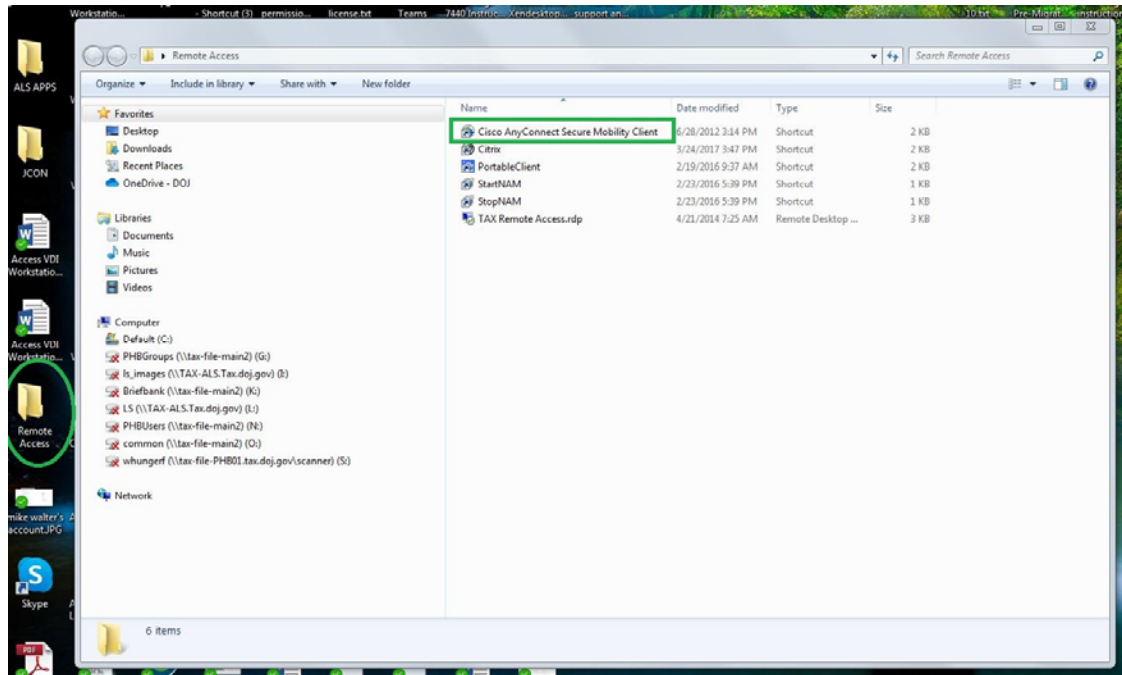


## Remote Access using PIV (Windows 7)

These instructions explain how to connect wirelessly to the Tax Division Network on a Windows 7 computer. Windows 10 instructions can be found at the end of this document.

After you log onto your Windows 7 laptop with your PIV card double-click **Cisco Anyconnect Secure Mobility Client** located in the Remote Access folder on your desktop to get started.



### Establishing a Wifi Connection

The Cisco AnyConnect Secure Mobility Client dialog is where you will select the DOJ Virtual Private Network (VPN) that you would like to use to connect and your wireless Network connection which will be either your Home wifi or a Personal Hotspot using your iPhone or iPad. You will need to know your Home wifi or personal hotspot password in order to connect.

You must first establish a wireless Network connection before you can connect to the VPN. In the Network field click the down arrow and choose your wifi connection (either your Home wifi or Personal Hotspot). **If you are unable to select a wifi Network connection method in the Network field follow the instructions on the next page.**



## Remote Access using PIV (Windows 7)

If you are unable to select a wifi Network connection method you will see a red X:



1. Click the wireless network icon in the system tray located in the lower right corner of your monitor near the clock.
2. Select the Home/Personal Hotspot wireless network connection you will be using. (You will need the password for the selected connection.)



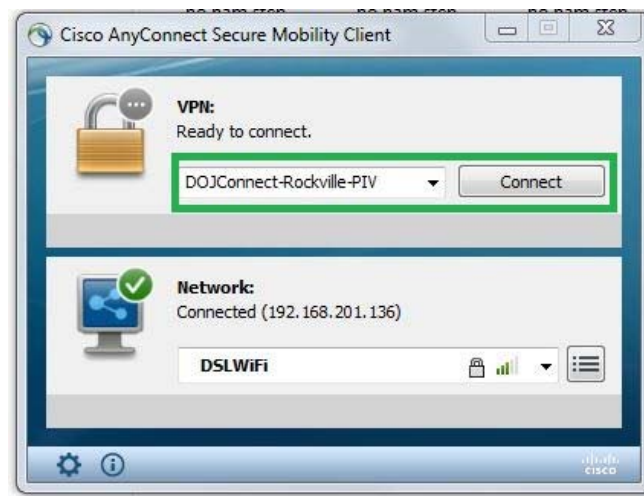
3. After selecting your network, you will be prompted to enter a security key. This is where your home wifi or personal hotspot password will be entered. After entering the password, click OK.



## Remote Access using PIV (Windows 7)

---

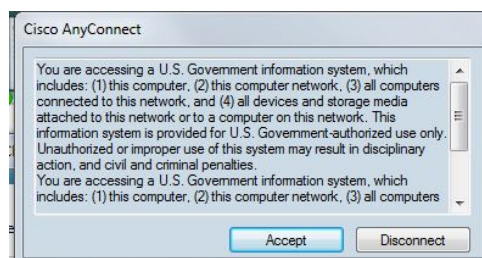
Once you have successfully connected to your wireless network you should see a green checkmark next to the Network field. You are now ready to select a VPN and connect to the Tax Division network.



1. Choose a VPN from the dropdown. Be sure to choose a connection that ends with -PIV.
2. Click Connect.
3. You will be prompted to enter your PIV card's pin. Enter your pin and click OK.



4. Cisco AnyConnect will run through a series of assessment checks. Once you are connected to the network the following banner will appear:



5. Click Accept. The Cisco AnyConnect window will disappear and you should be able to access your email, TaxDoc, and network drives just as if you were in the office. You are now connected to the Tax Division's VPN!

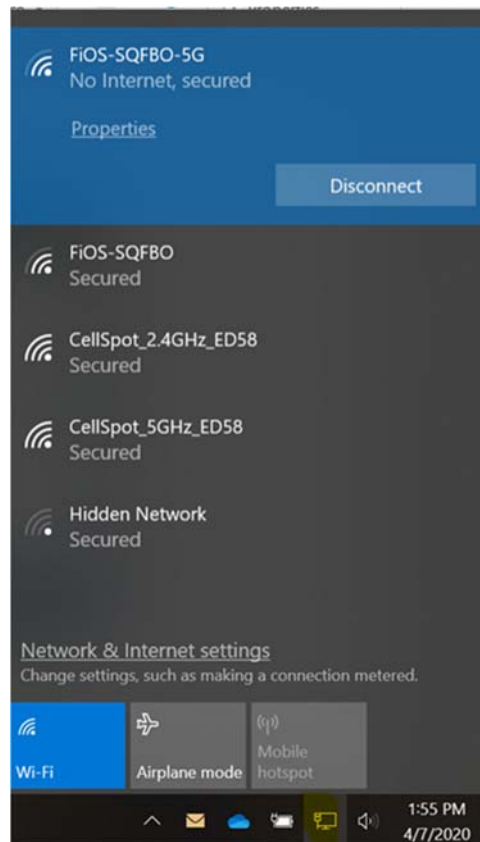
## Remote Access using PIV (Windows 10)

---

These instructions explain how to connect wirelessly to the Tax Division Network on a Windows 10 computer.

After you log onto your Windows 10 laptop with your PIV card.

1. Click the wireless network icon in the system tray located in the lower right corner of your monitor near the clock.
2. Select the Home/Personal Hotspot wireless network connection you will be using. (*You will need the password for the selected connection.*)



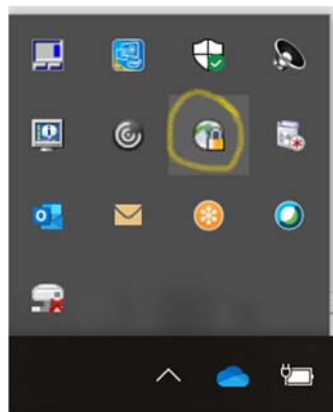
## Connecting to the Tax Division Network (Windows 10)

---

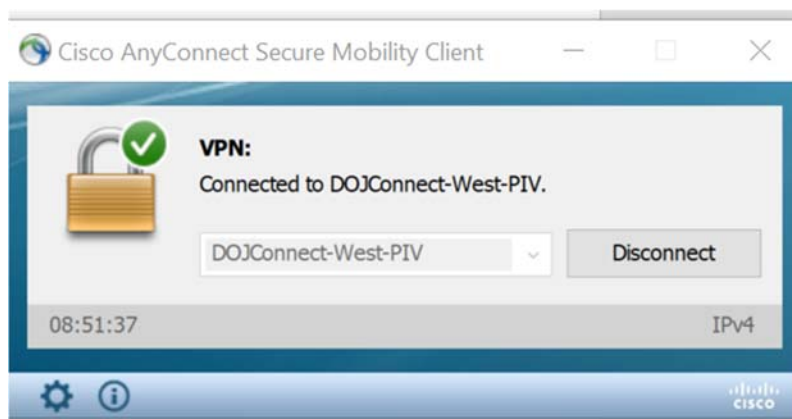
3. After selecting your network, you will be prompted to enter a security key. This is where your home wifi or personal hotspot password will be entered. After entering the password, click OK.



4. Double-click the **Cisco Anyconnect Secure Mobility Client** located in the task tray. You can also find the Cisco Anyconnect application in the Remote Access folder on the Desktop.



5. Once you have successfully connected to your wireless network choose a VPN from the dropdown. Be sure to choose a connection that ends with -PIV.

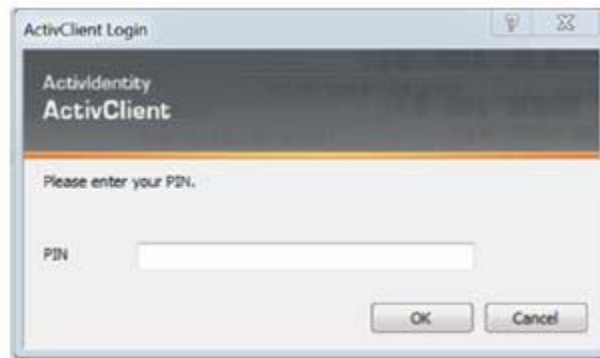


6. Click Connect.

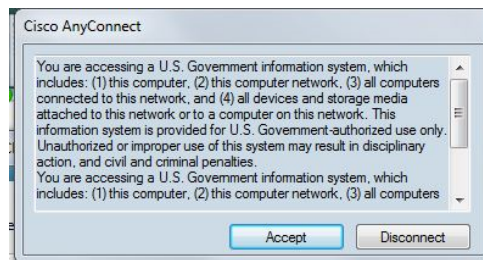
## Connecting to the Tax Division Network (Windows 10)

---

7. You will be prompted to enter your PIV card's pin. Enter your pin and click OK.



8. Cisco AnyConnect will run through a series of assessment checks. Once you are connected to the network the following banner will appear:



9. Click Accept. The Cisco AnyConnect window will disappear and you should be able to access your email, TaxDoc, and network drives just as if you were in the office. You are now connected to the Tax Division's VPN!