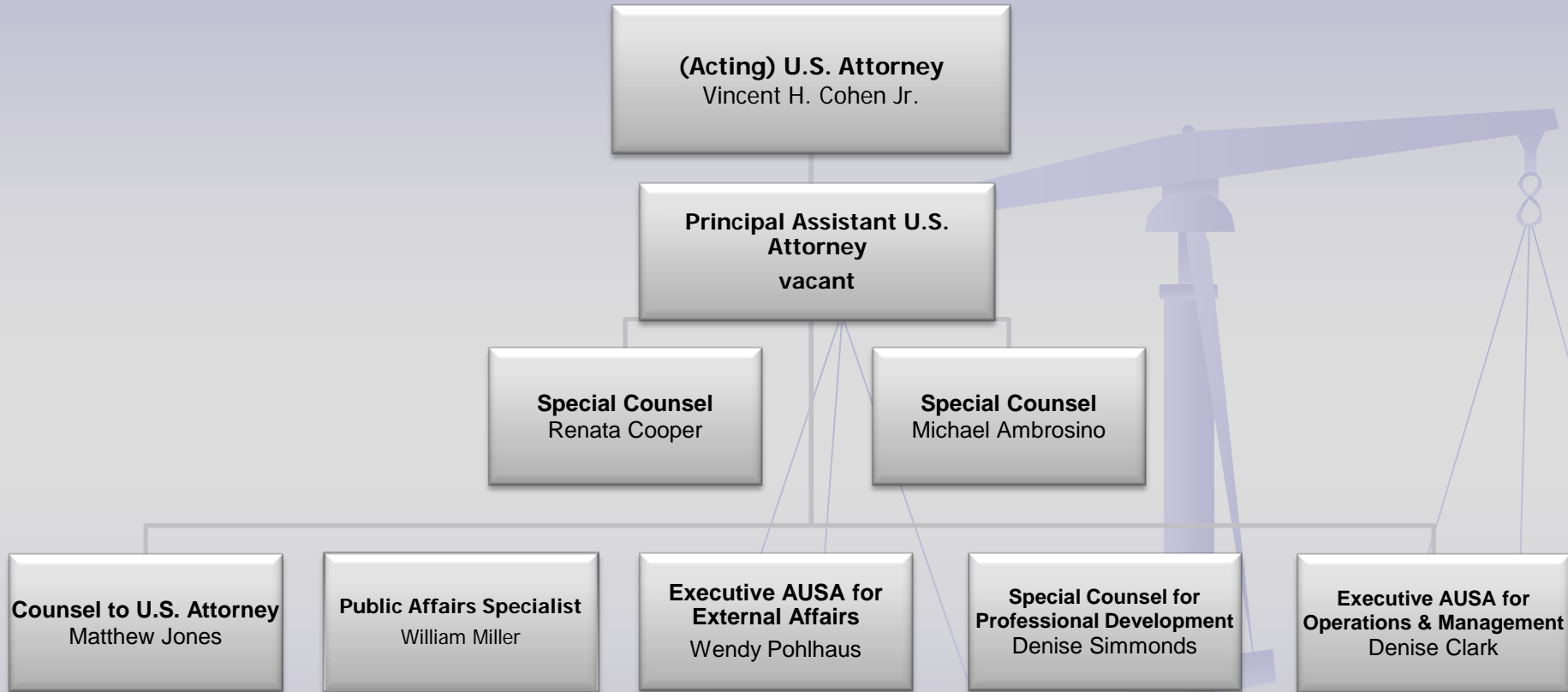


Front Office



Administrative Division (Admin)



Victim/Witness Assistance Unit

Chief
Jelahn Stewart

```
graph TD; A[Chief  
Jelahn Stewart] --> B[Supervisory Witness Security Specialist  
Michael Hailey]; A --> C[Supervisory Victim/Witness Program Specialist  
Jennifer Clark]; A --> D[Supervisory Victim/Witness Program Specialist  
Lorraine Chase]; A --> E[Supervisory Central Services  
David Foster];
```

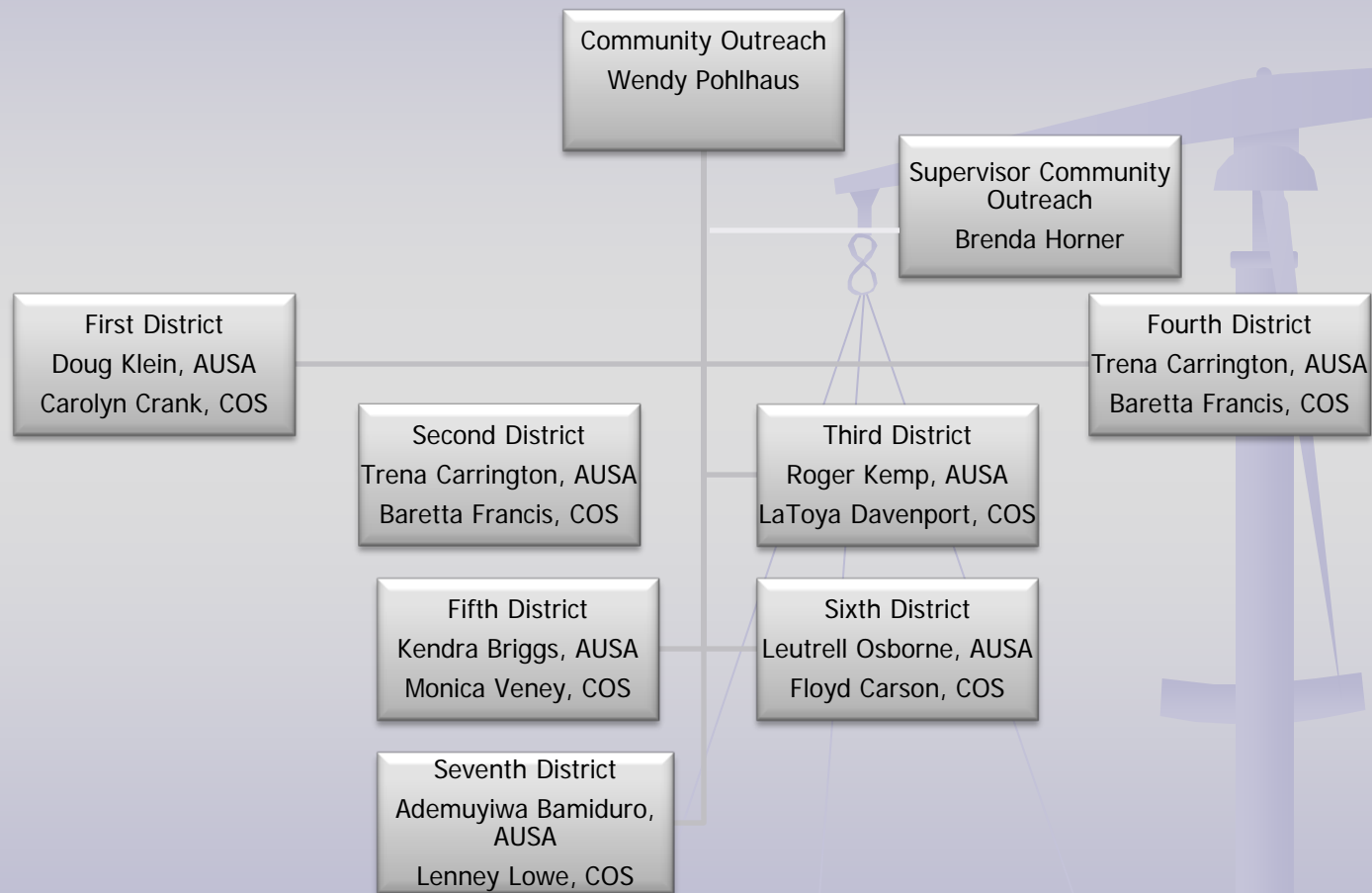
Supervisory Witness
Security Specialist
Michael Hailey

Supervisory
Victim/Witness
Program Specialist
Jennifer Clark

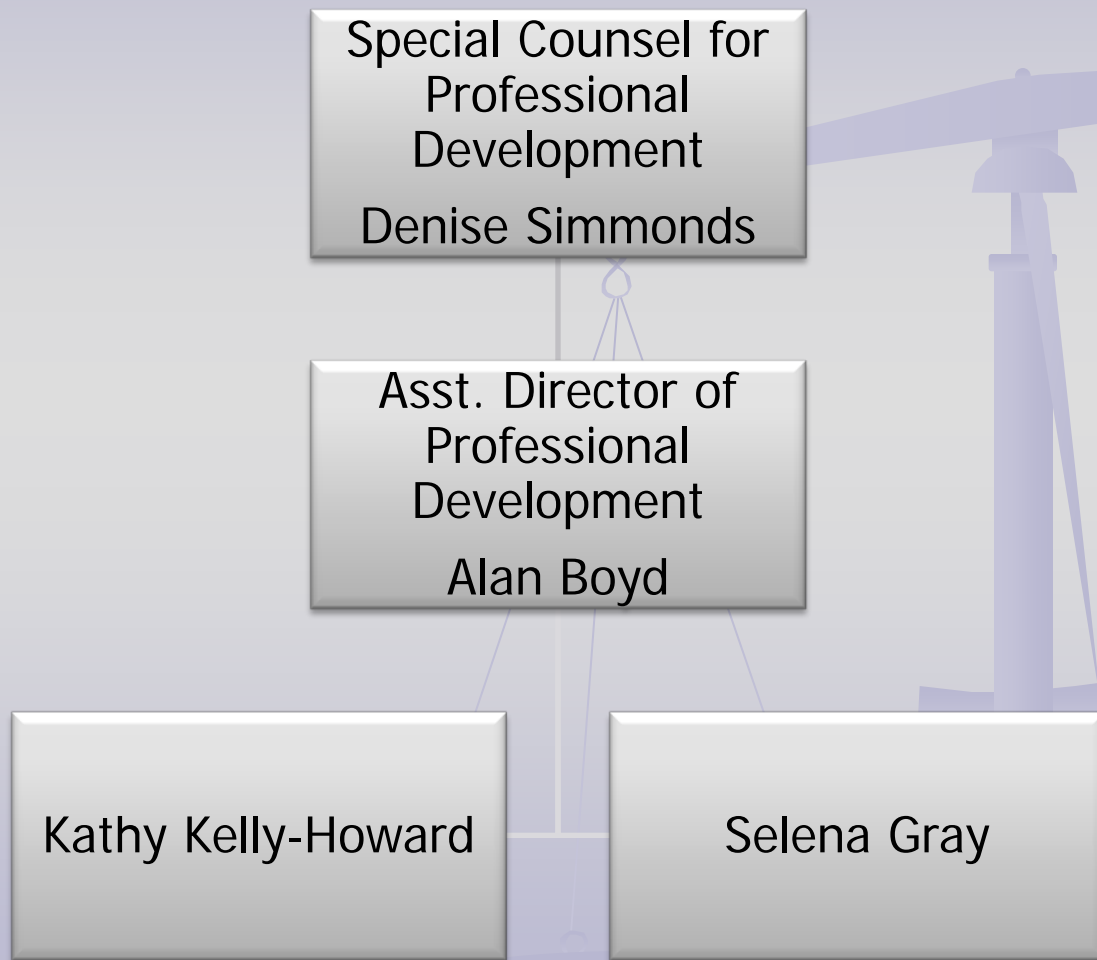
Supervisory
Victim/Witness
Program Specialist
Lorraine Chase

Supervisory
Central Services
David Foster

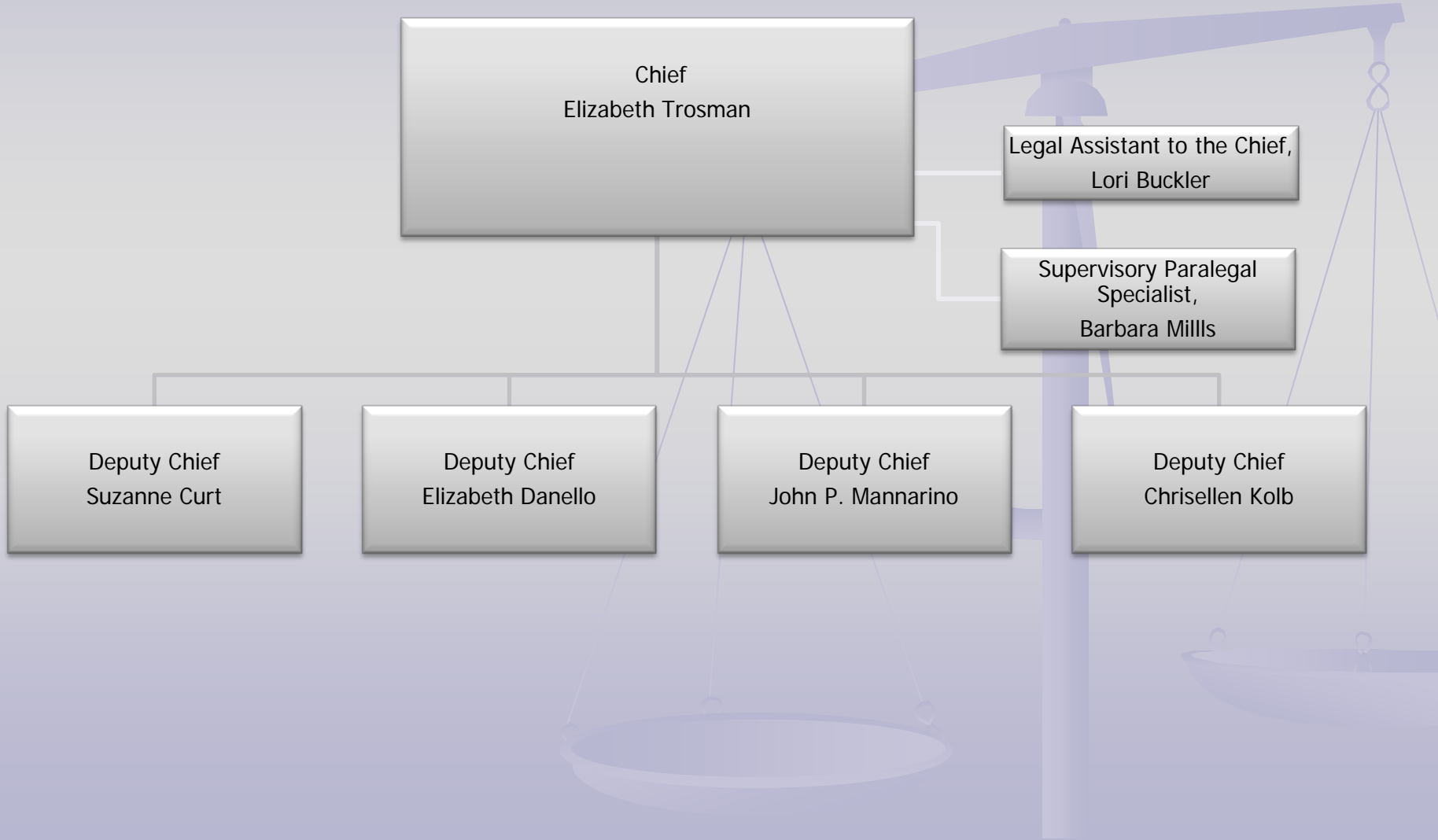
Community Outreach



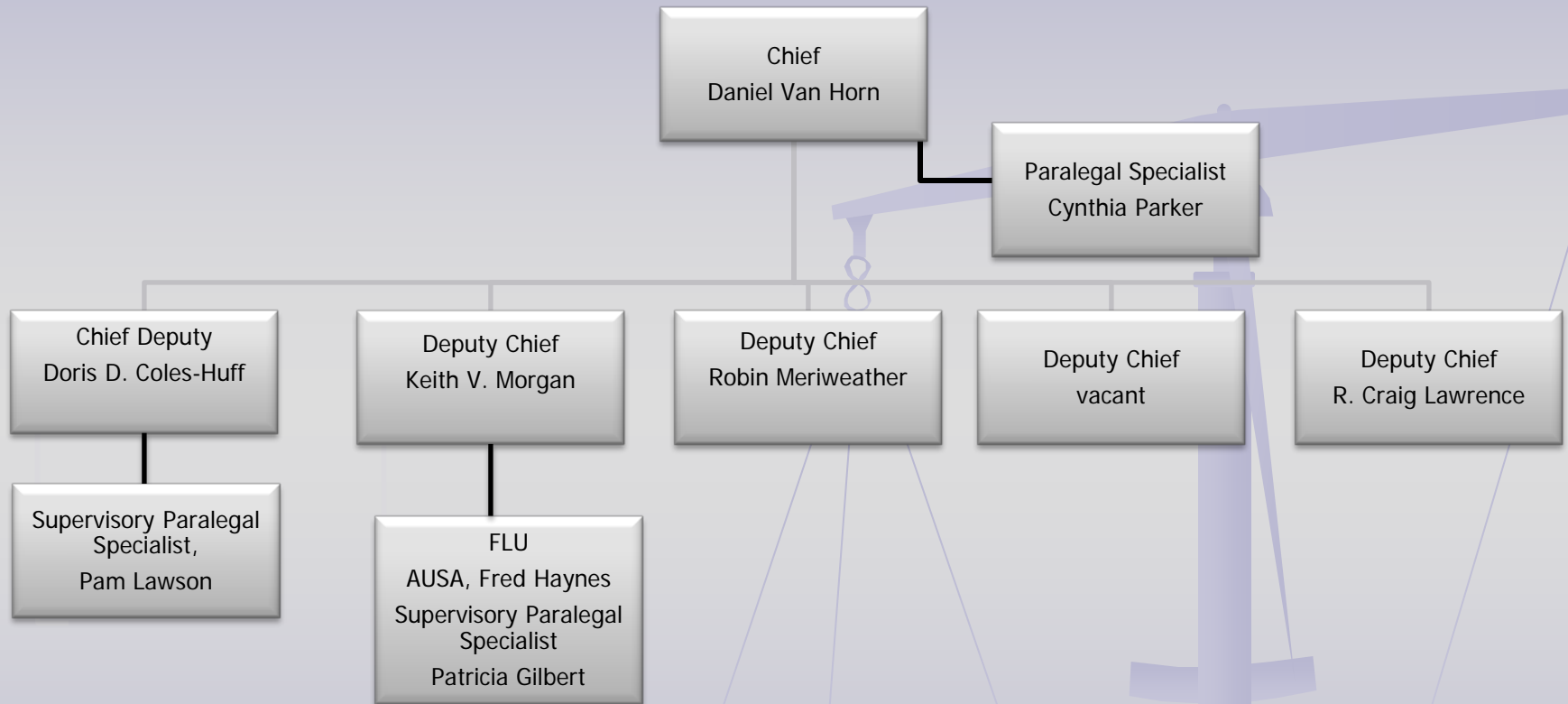
Professional Development



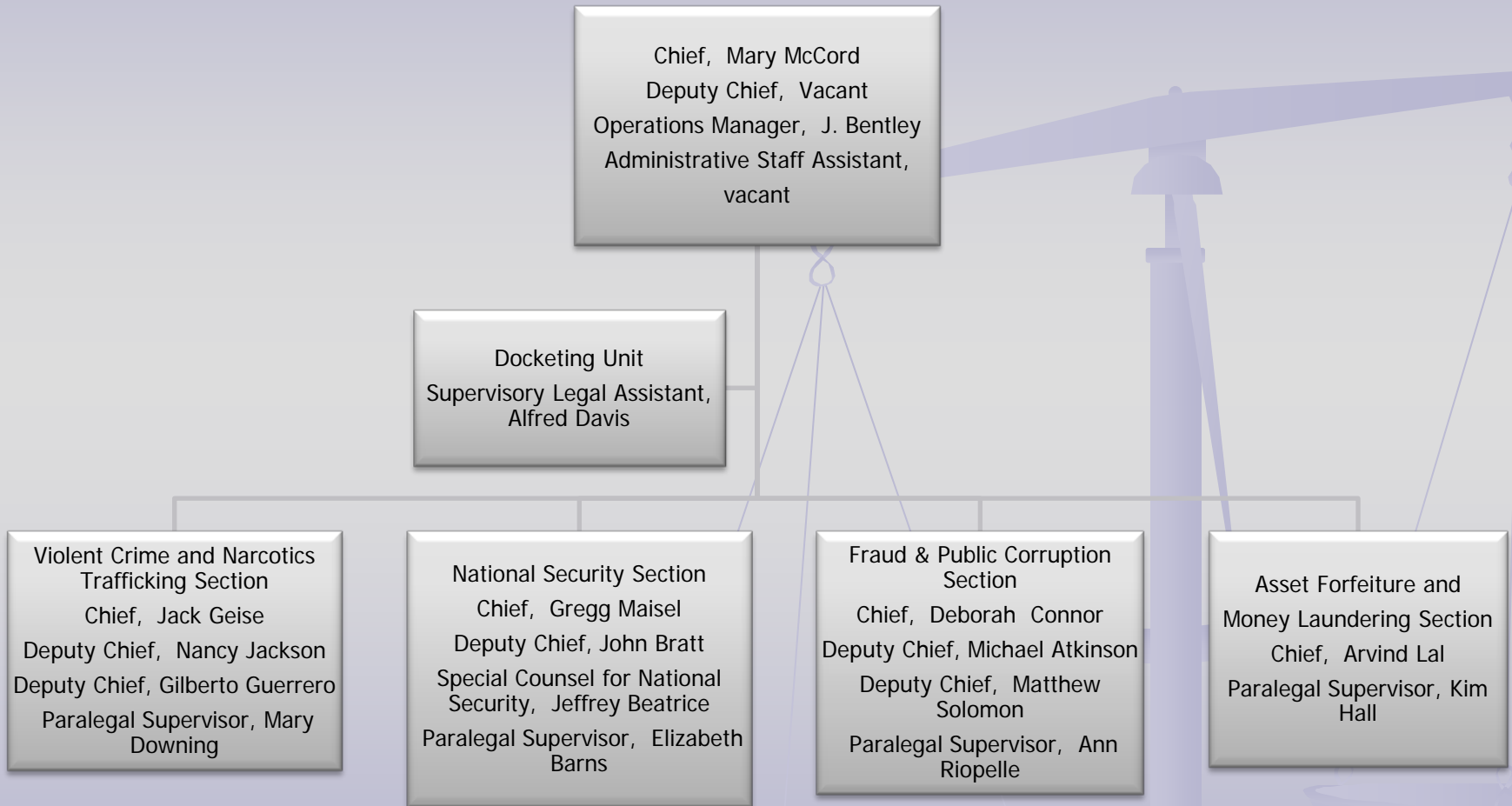
Appellate Division




Civil Division



Criminal Division



Special Proceedings Division



```
graph TD; A[Chief  
Leslie Ann Gerardo] --- B[Supervisory Paralegal Specialist  
Barbara Burnett];
```

Chief
Leslie Ann Gerardo

Supervisory Paralegal Specialist
Barbara Burnett

Superior Court Division

Chief, Richard Tischner
Secretary to the Chief, Dawn White

Deputy Chief,
Michelle Jackson

Criminal Investigation Unit
Supervisory Criminal
Investigator, Christopher
Brophy

Supervisory Paralegal Specialists

Papering, Kendrell Smith
Grand Jury, Lynda Randolph
Misdemeanor, vacant

Court Operations
Manager,
Linda McDonald

Trial Litigation
Supervisor,
Rochelle Mills

Supervisory Paralegal Specialists

SO/DV, Jason Manuel
Homicide, Sharon Newman
Felony Major Crimes Trial Section,
Darline Douglas

Felony Major Crimes Trial Section

Chief, Kevin Flynn
Senior Deputy Chief, Lisa Greene

Misdemeanor Unit

Deputy Chief, Kacie Weston
Deputy Chief, Jennifer Kerkhoff

Deputy Chiefs by District

1st District, Nihar Mohanty
2nd / 3rd District, Ann Carroll
4th District, John Giovannelli
5th District, David Rubenstein
6th District, Jocelyn Ballantine
7th District, Michael Truscott

HOMICIDE SECTION

Chief, Jeffrey Ragsdale
Deputy Chief, Glenn Kirschner
Deputy Chief, Sharon Donovan
Deputy Chief, David Gorman

SEX OFFENSE & DOMESTIC VIOLENCE SECTION

Chief, Kelly A. Higashi
Deputy Chief, Sharon Marcus-Kurn
Deputy Chief, Mark O'Brien

