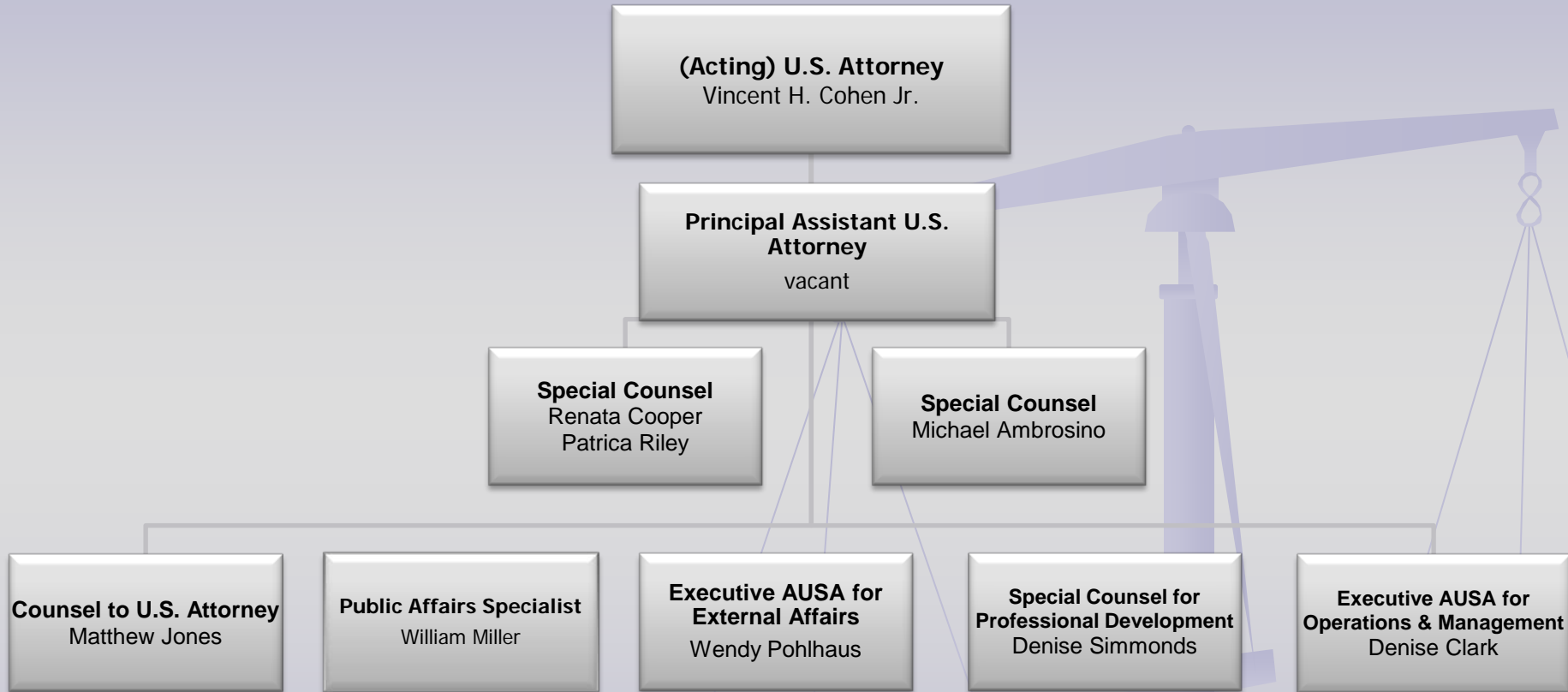


# Front Office



# Administrative Division (Admin)



# Victim/Witness Assistance Unit

```
graph TD; Chief["Chief  
Jelahn Stewart"] --- SWSS["Supervisory Witness  
Security Specialist  
Michael Hailey"]; Chief --- SVWPS1["Supervisory  
Victim/Witness  
Program Specialist  
Jennifer Clark"]; Chief --- SVWPS2["Supervisory  
Victim/Witness  
Program Specialist  
Lorraine Chase"]; Chief --- SCSS["Supervisory  
Central Services  
David Foster"]
```

Chief  
Jelahn Stewart

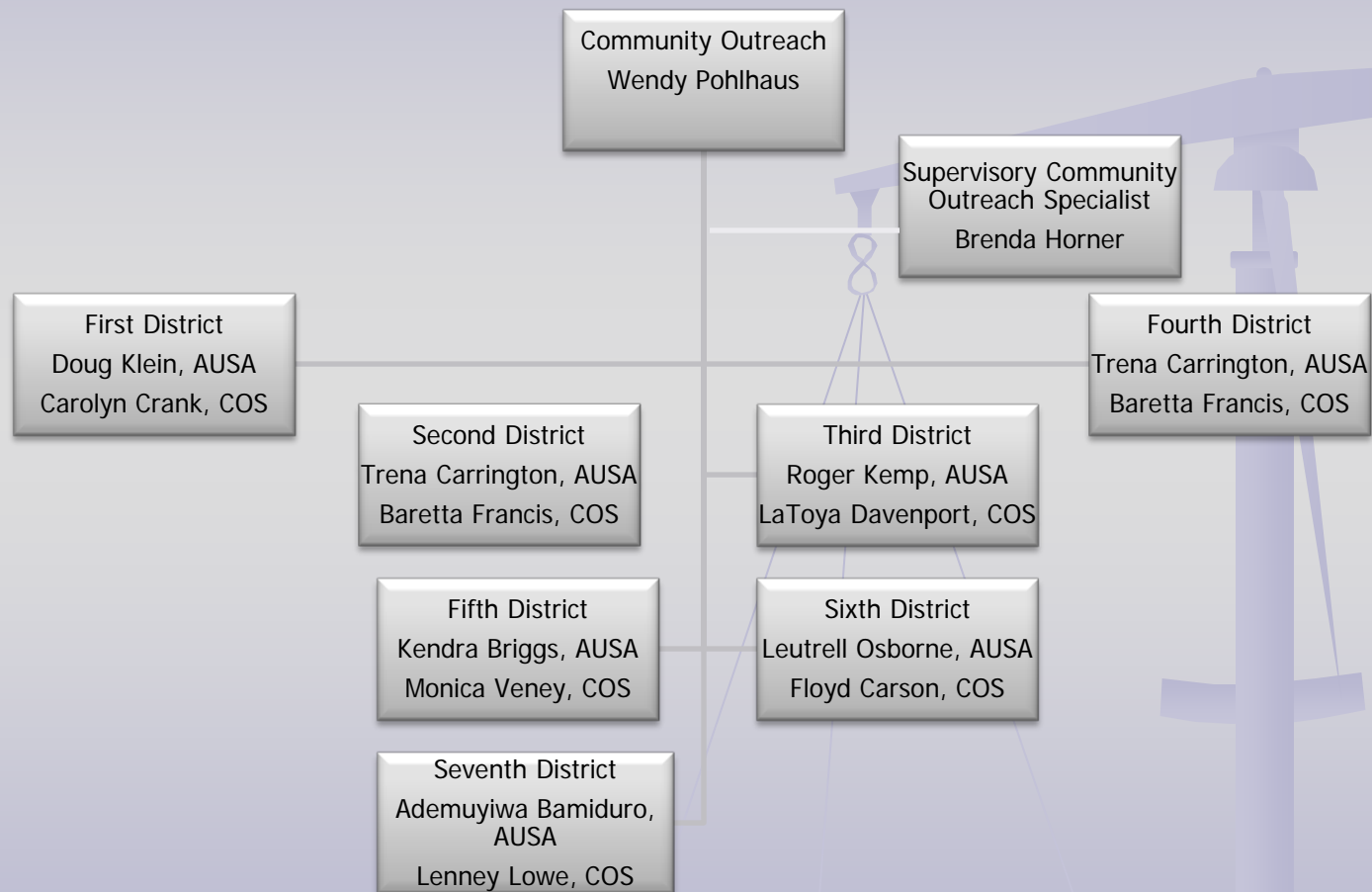
Supervisory Witness  
Security Specialist  
Michael Hailey

Supervisory  
Victim/Witness  
Program Specialist  
Jennifer Clark

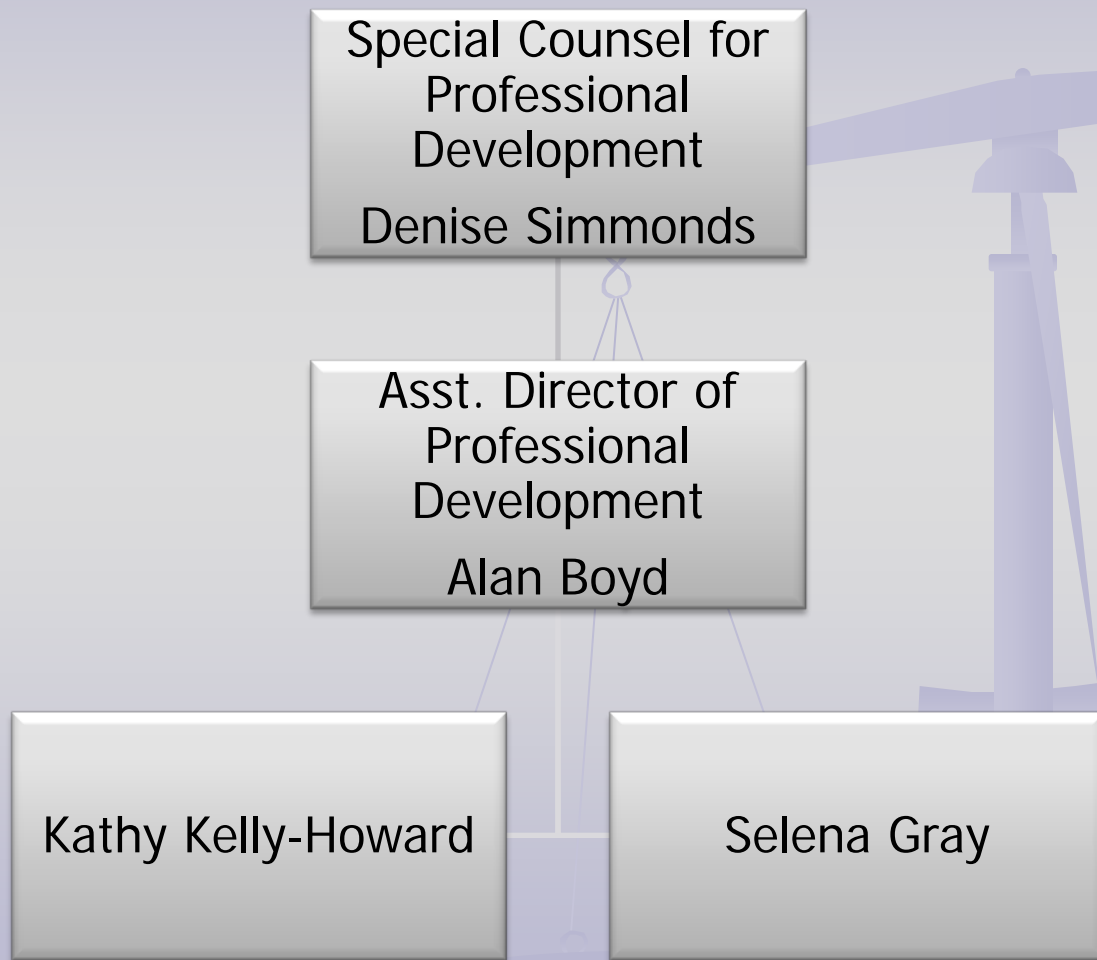
Supervisory  
Victim/Witness  
Program Specialist  
Lorraine Chase

Supervisory  
Central Services  
David Foster

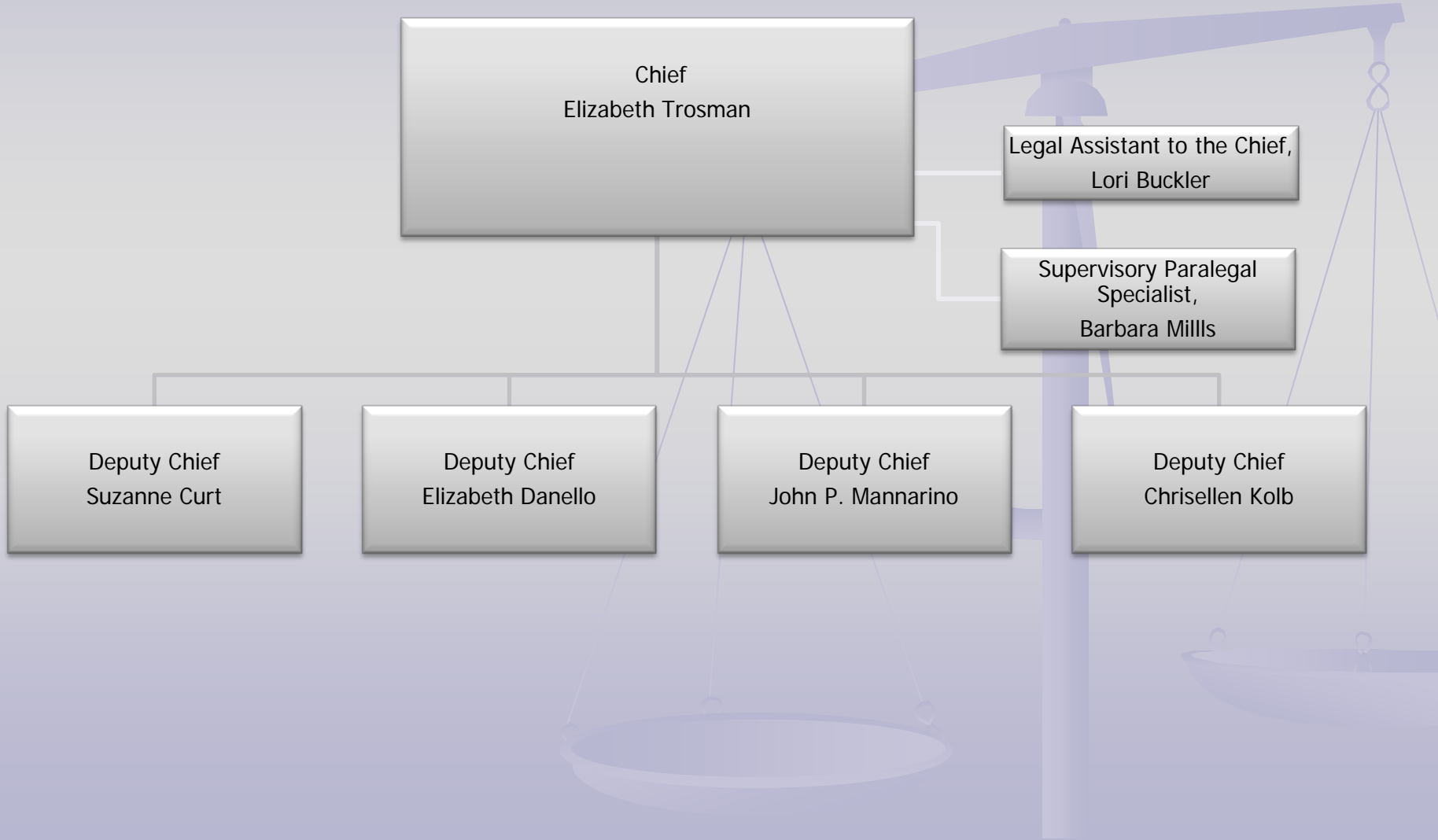
# Community Outreach



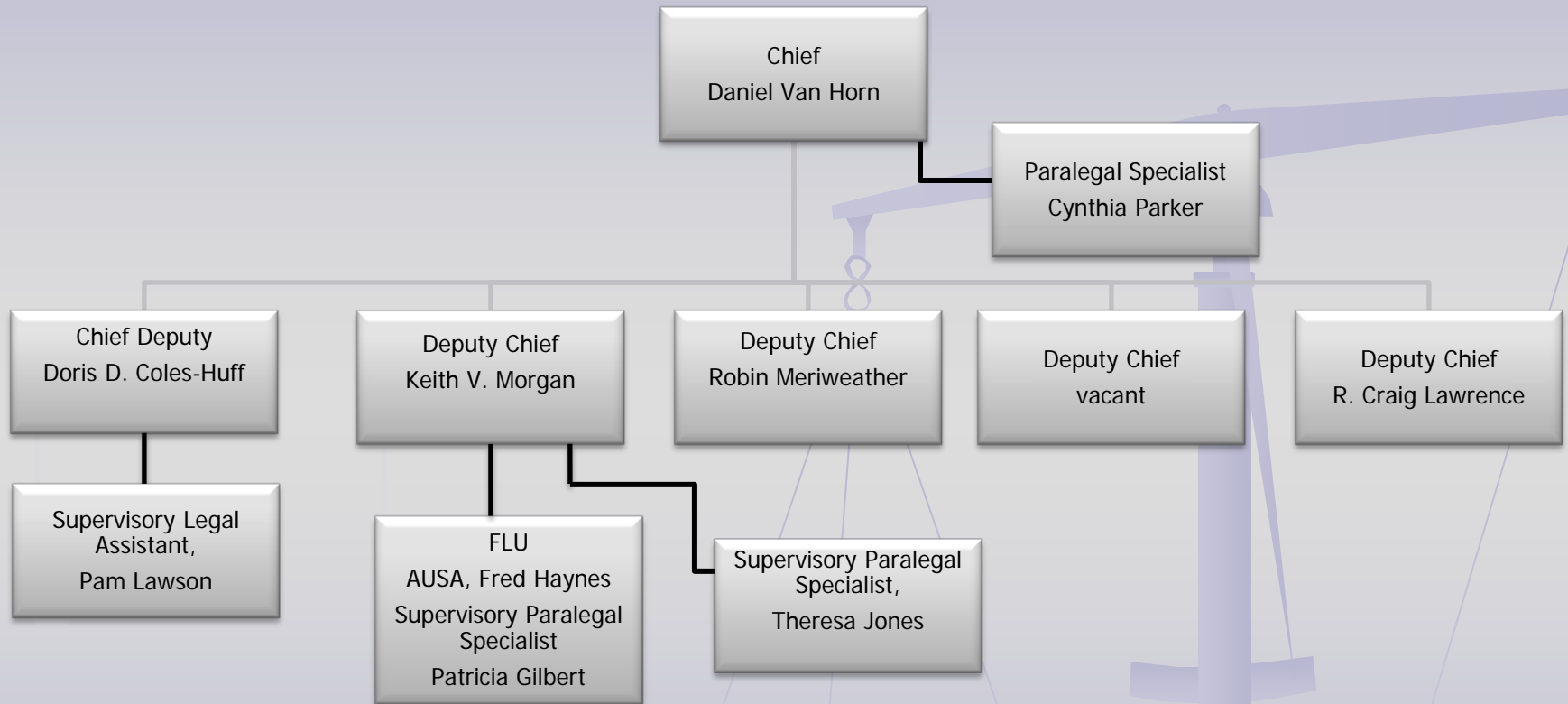
# Professional Development



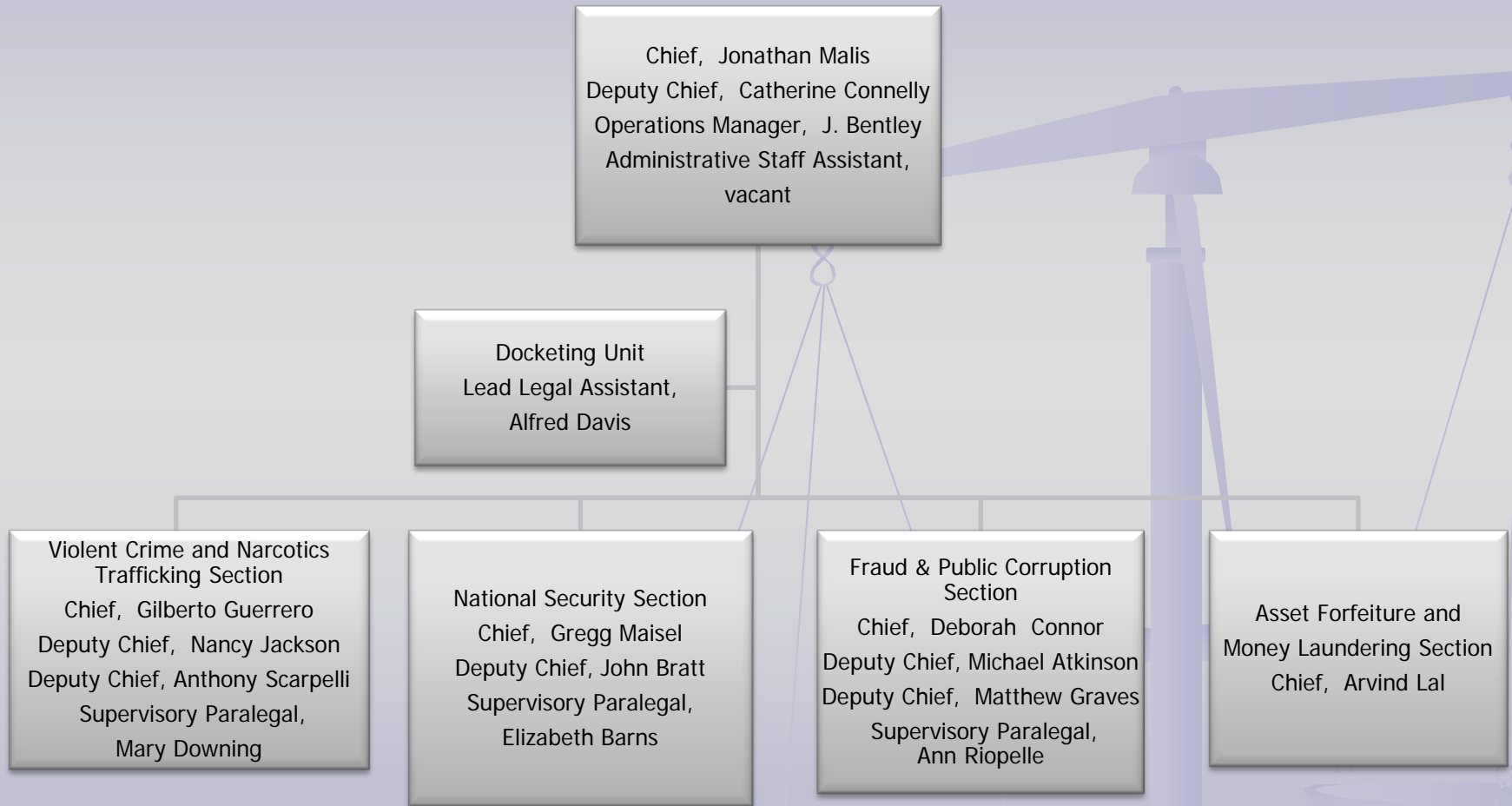
# Appellate Division



# Civil Division



# Criminal Division





# Special Proceedings Division

Chief  
Leslie Ann Gerardo

Deputy Chief,  
Anthony Quinn

Supervisory Paralegal Specialist  
Barbara Burnett



# Superior Court Division

Chief, Richard Tischner  
Secretary to the Chief, Dawn White

Deputy Chief,  
Michelle Jackson

Criminal Investigation Unit  
Supervisory Criminal  
Investigator, Christopher  
Brophy

## Supervisory Paralegal Specialists

Papering, Kendrell Smith  
Grand Jury, Lynda Randolph  
Misdemeanor, Ryen Hanna

Court Operations  
Manager,  
Linda McDonald

Trial Litigation  
Supervisor,  
Rochelle Mills

## Supervisory Paralegal Specialists

SO/DV, Jason Manuel  
Homicide, Sharon Newman  
Felony Major Crimes Trial Section,  
Darline Douglas

## Felony Major Crimes Trial Section

Chief, Kevin Flynn  
Senior Deputy Chief, Lisa Greene

## Misdemeanor Unit

Deputy Chief, Fernando  
Campoamor-Sanchez  
Deputy Chief, Michelle Parikh

## Deputy Chiefs by District

1<sup>st</sup> District, Nihar Mohanty  
2<sup>nd</sup> / 4<sup>th</sup> District, John Giovannelli  
3<sup>rd</sup> District, John Gidez  
5<sup>th</sup> District, Jennifer Kerkhoff  
6<sup>th</sup> District, Jocelyn Ballantine  
7<sup>th</sup> District, Michael Truscott

## HOMICIDE SECTION

Chief, Jeffrey Ragsdale  
Deputy Chief, Glenn Kirschner  
Deputy Chief, Sharon Donovan  
Deputy Chief, David Gorman

## SEX OFFENSE & DOMESTIC VIOLENCE SECTION

Chief, Kelly A. Higashi  
Deputy Chief, Sharon Marcus-Kurn  
Deputy Chief, Mark O'Brien

