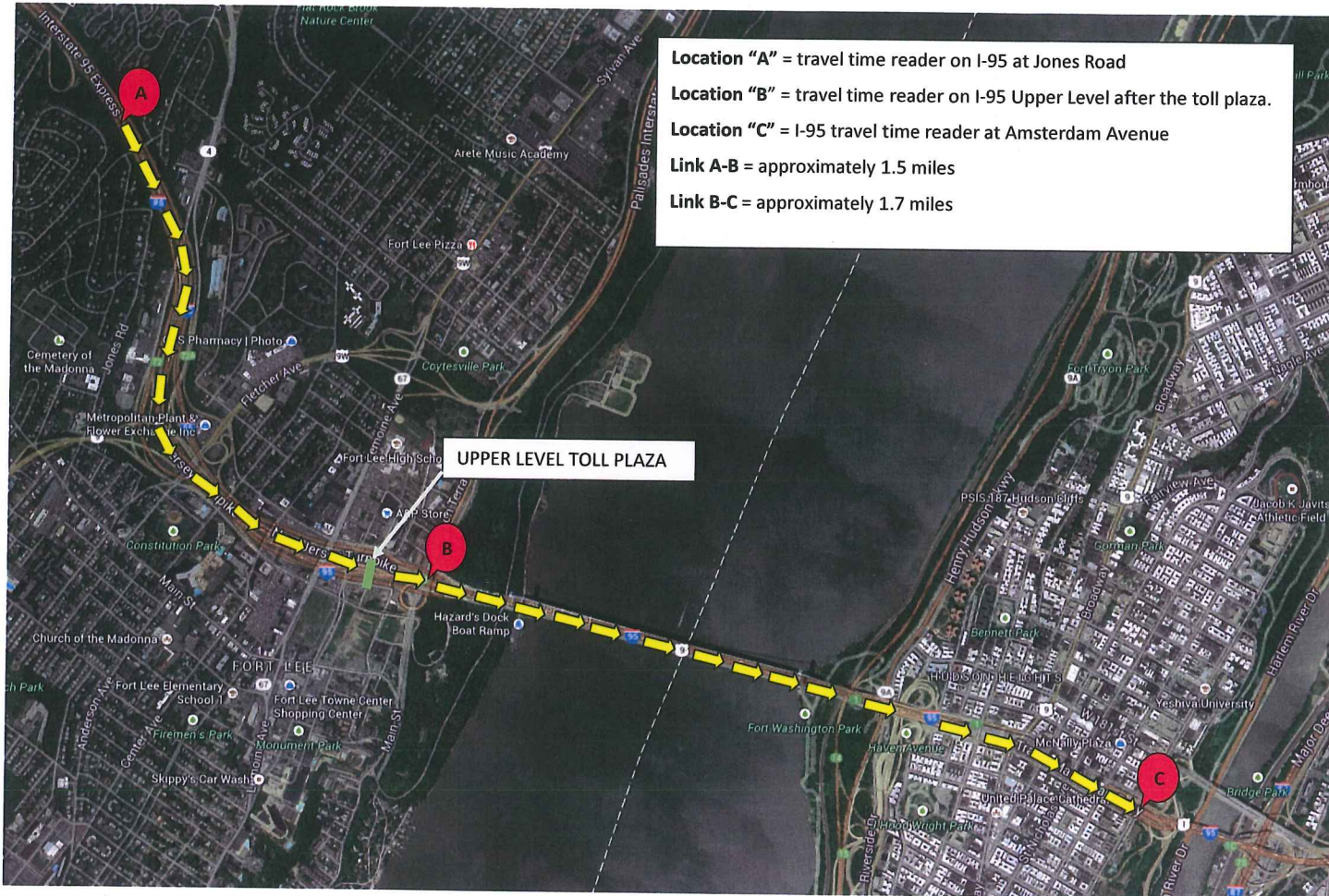


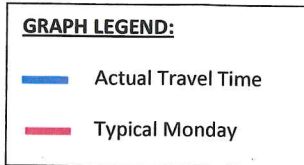
**GEORGE WASHINGTON BRIDGE  
TRAVEL TIME DATA**

Monday, September 9, 2013

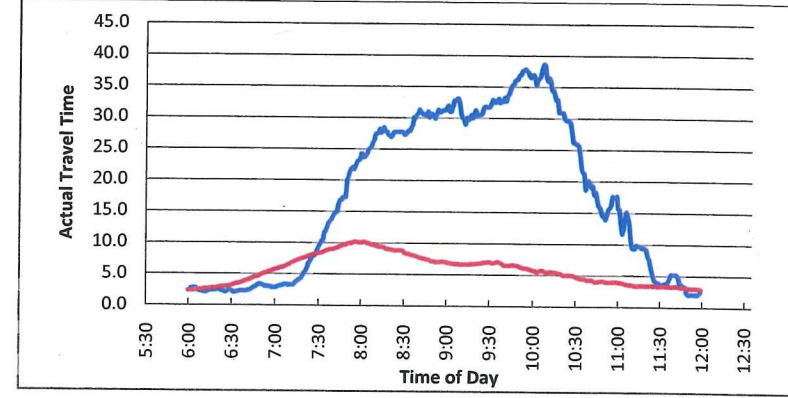


**Note:**

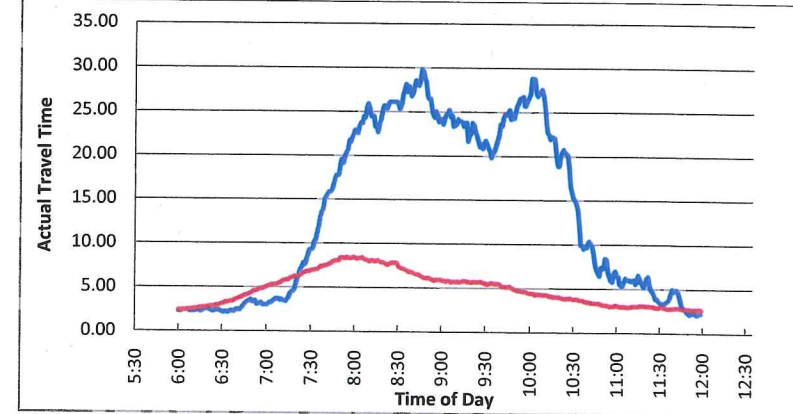
1. Reported incident east of George Washington Bridge creating delays
2. Typical Travel Time is an average of 2012 archived data for the same day and time interval.



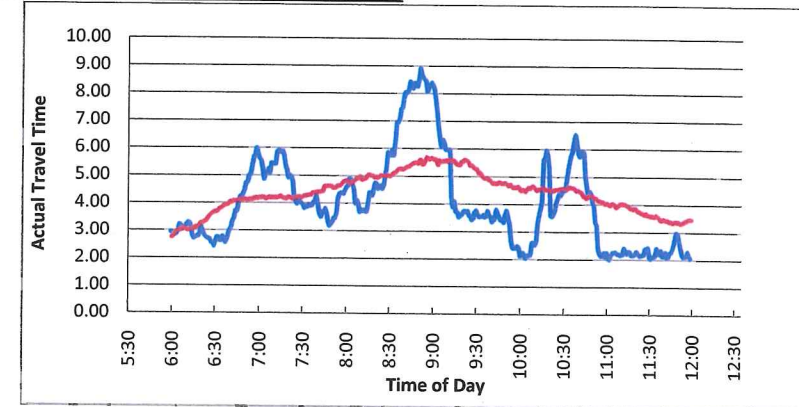
**I-95 Express Lanes to Upper Level Toll Plaza (A to B)**



**I-95 Local Lanes to Upper Level Toll Plaza (A to B)**



**I-95 Toll Plaza to Amsterdam Avenue (B to C)**



**GOVERNMENT  
EXHIBIT  
1238**