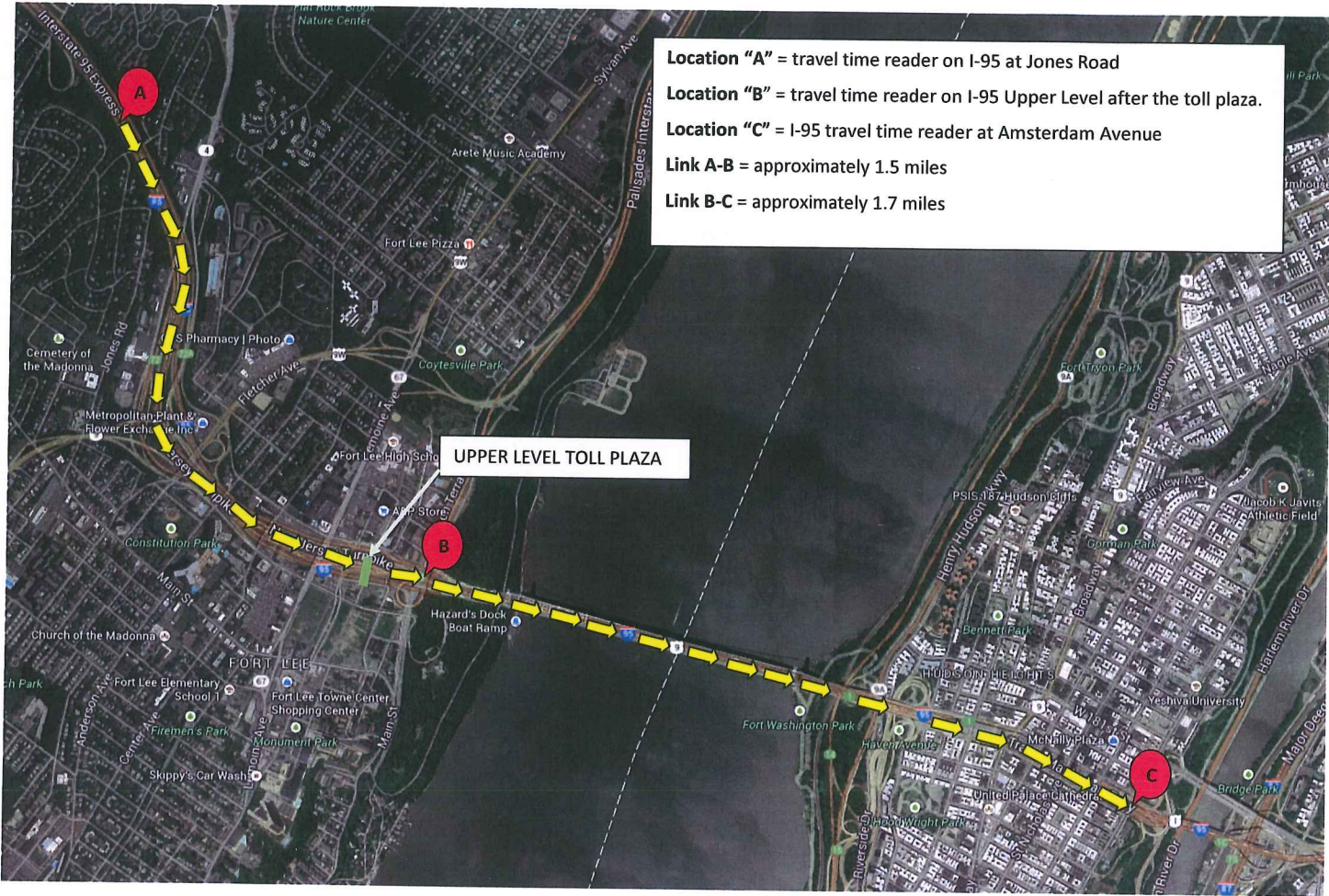


GEORGE WASHINGTON BRIDGE  
TRAVEL TIME DATA

Thursday, September 12, 2013



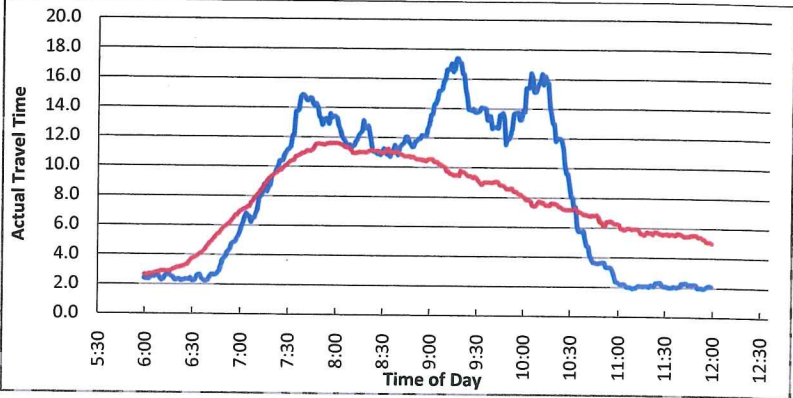
- Note:**
1. Due to delays on the link B-C, there appears to be an incident further east on I-95.
  2. Typical Travel Time is an average of 2012 archived data for the same day and time interval.

**GRAPH LEGEND:**

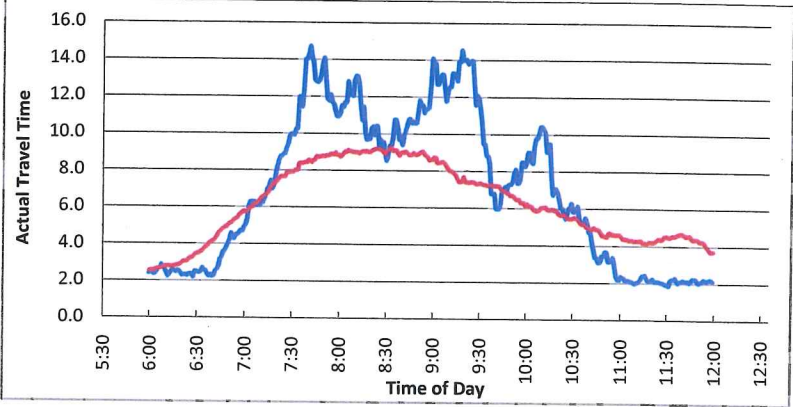
- Actual Travel Time
- Typical Thursday

**GOVERNMENT  
EXHIBIT  
1241**

**I-95 Express Lanes to Upper Level Toll Plaza (A to B)**



**I-95 Local Lanes to Upper Level Toll Plaza (A to B)**



**I-95 Toll Plaza to Amsterdam Avenue (B to C)**

