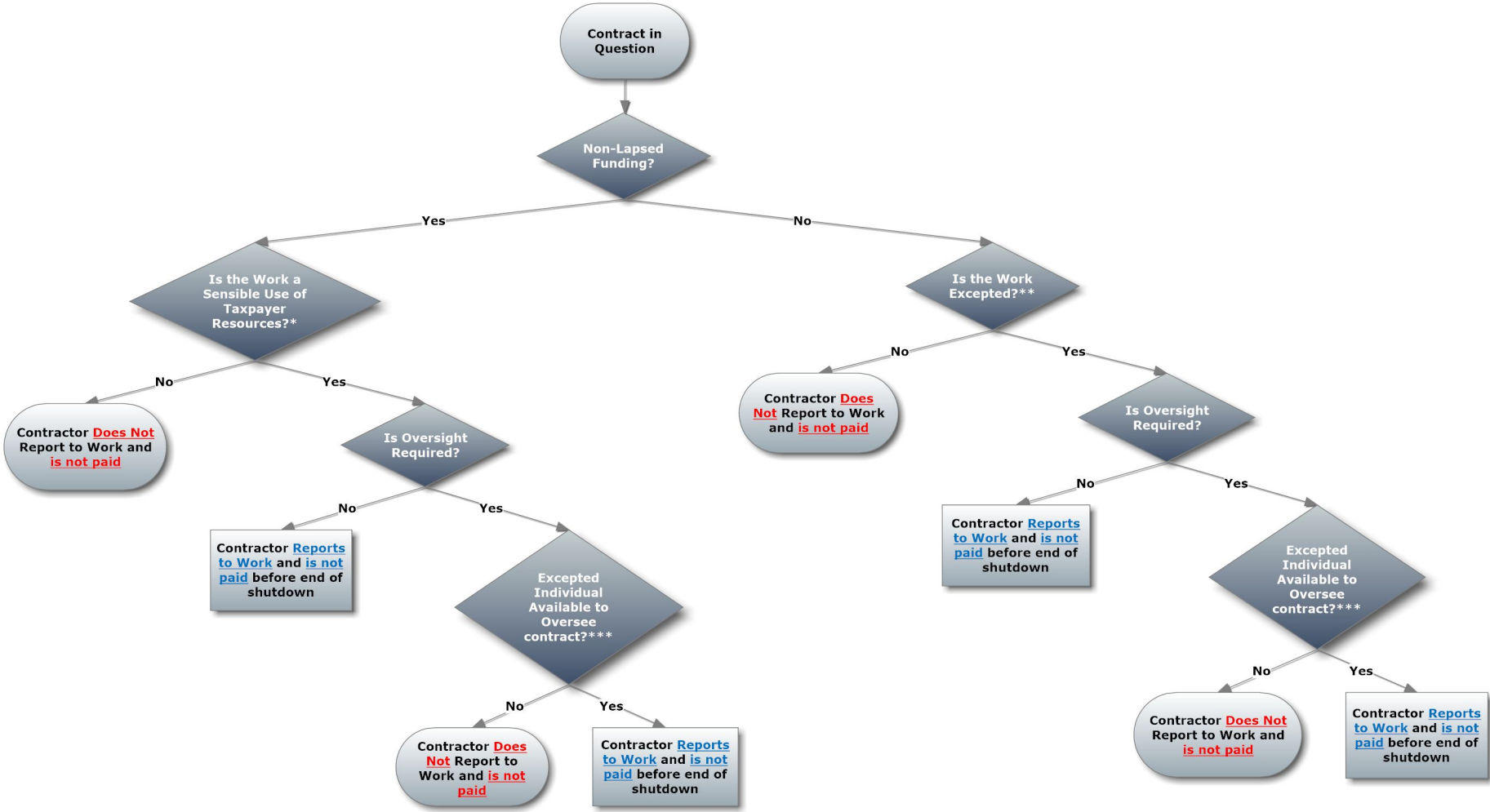


United States Attorneys - Lapse in Appropriations Contractor Flow Chart



Footnotes:

*This determination is subjective, and should be made on a case-by-case basis. For example, if the nature of the contractor's Scope of Work is to deliver daily support for a FTE position that is furloughed, then the continuation of that work during a lapse would not constitute a sensible use of taxpayer resources and that contractor should not continue performing.

**The decision as to whether or not the work is excepted should follow the exception criteria detailed in formal policy guidance, such as USAPP 3-812.001.

***As a note, the excepted individual available to oversee contract work must do so in between excepted activities. Overseeing the contract must not interrupt, interfere with, or delay the individual's performance of an excepted function. Additionally, a non-excepted employee cannot be deemed excepted solely for the purposes of overseeing contract work.